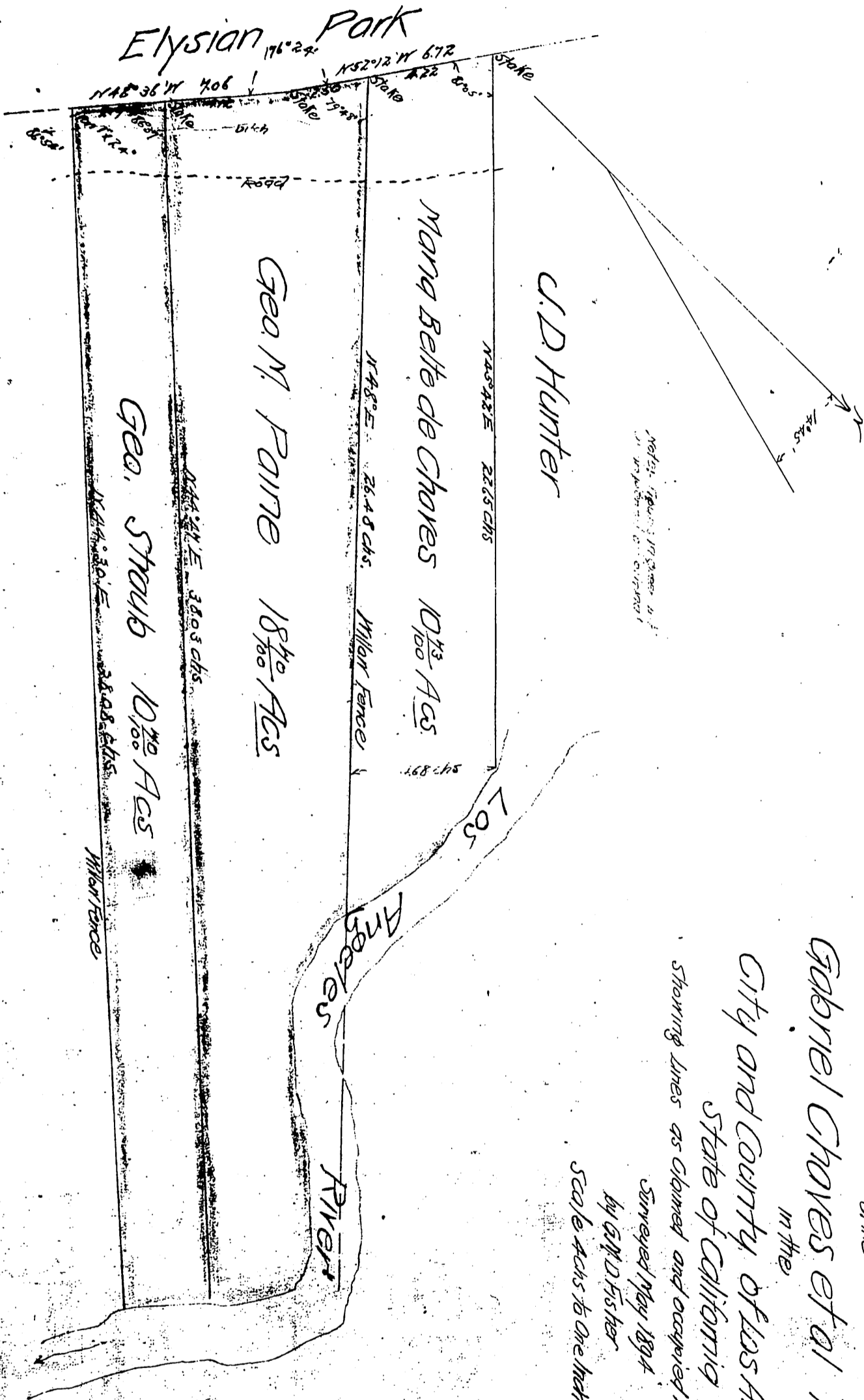


65



Map
of the
Gabriel Chaves et al Tract
in the
City and County of Los Angeles
State of California

Showing lines as claimed and occupied by parties interested
Surveyed May 1894
by G.M. Fisher
Scale Acers to One Inch.

Recorded May 18, 1897
at request of G.M. Paine

Boundary line Elysian Park established - Ord. 37351
C. S. 8209

Por. "G.M. Paine 18 7/10 Ac." deeded to City of L.A. D: 35-256 - O.R. 2862-236 also E: 44-229, O.R. 18581-229
Por. "Maria Belle de Chaves" dedicated for Park Purposes - Ord. 73268.
Por. " " " " " " " " " " " " " " Blake Ave. - Ord. 83052