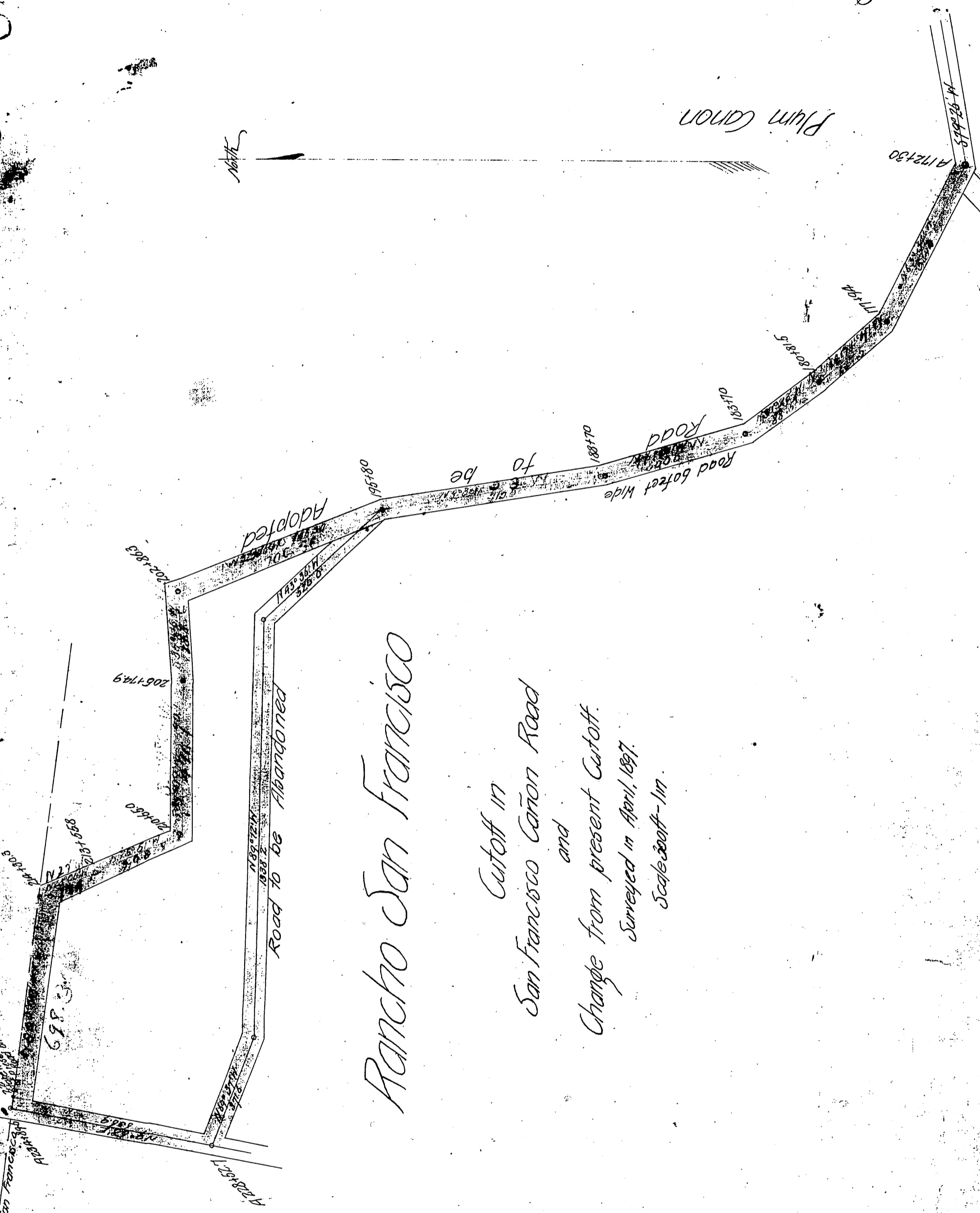


North

Plum Canon



Rancho San Francisco

Cutoff in
San Francisco Cañon Road
and
Change from present Cutoff.
Surveyed in April, 1897.
Scale 300ft = 1 in.

San Francisco Cañon

Newhall Land and Farming Co.
to
L. A. County.

Recorded at reg. of Co. Clerk.
Dec. 31, 1897.

Vacated - D: 46-137 O.R. 9546-18