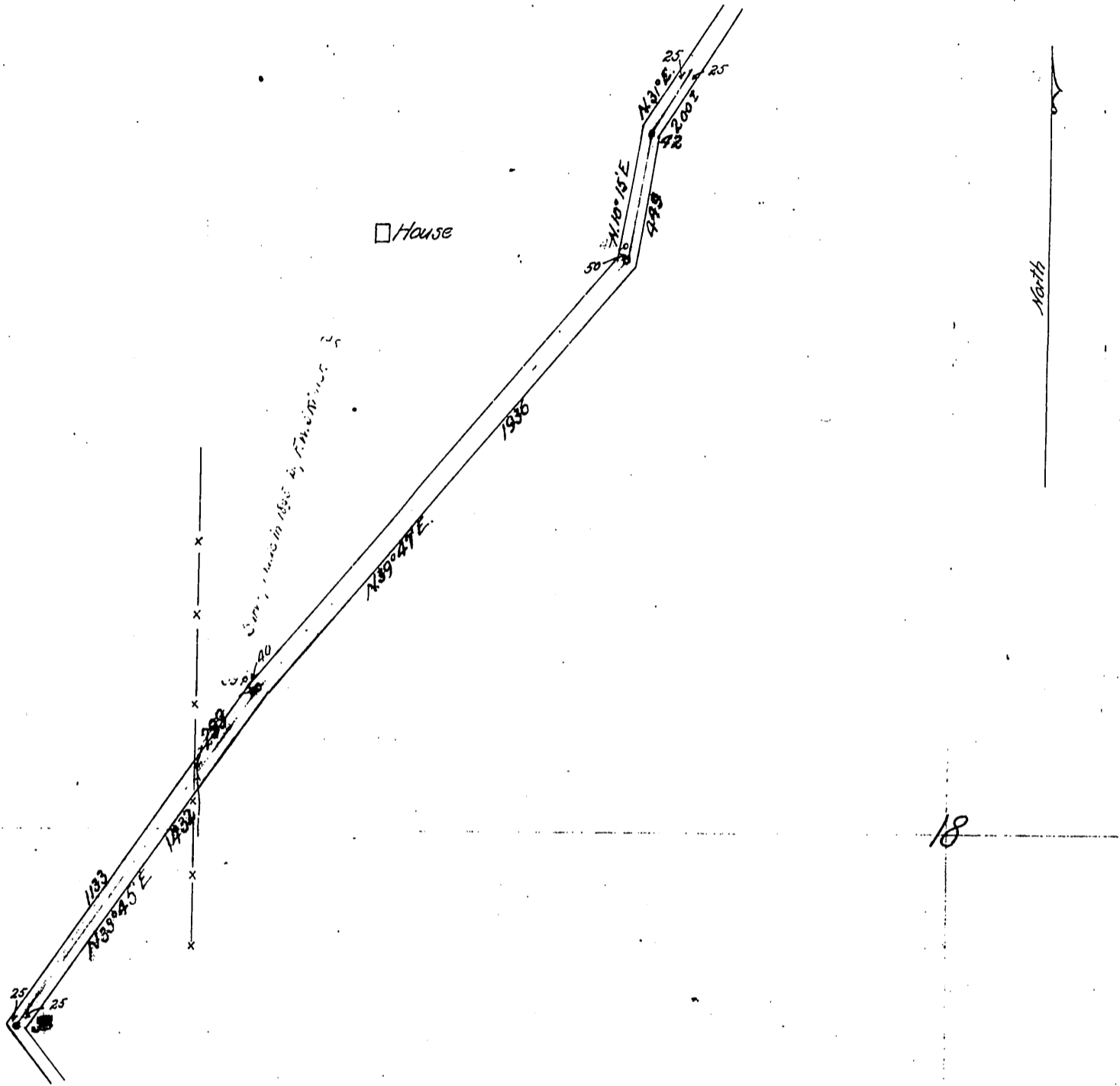


Portion of
Castaic Cañon Road

Scale 500' = 1"



W.W. Jenkins
Juana A. Costa de Cordova } to L.A. County

T. 5N. R. 17W. 13 | 18 T. 5N. R. 16W.
24 | 19

Recorded Nov. 4-1897.

Vacated - D:46-284, O.R. 13219-388