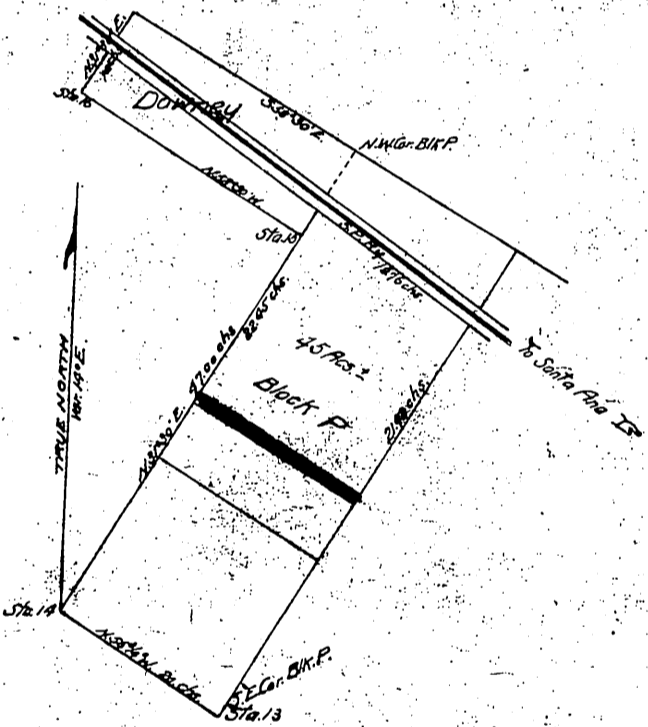


Portion of  
Rd. Santa Gertrudes.

W.C. Holman et ux  
To  
P.E. Clinkinbeard and W.S. Vanderburg



Note: 40' Rd, 20' es. ppty line, is dedicated  
to public use, by this deed, but not  
dedeed to County

cc. Sur.  
D. 1228  
40' Road in Block "P" named Palm Street D. 1228-80

Recorded March 3, 1898  
at request of Grantee