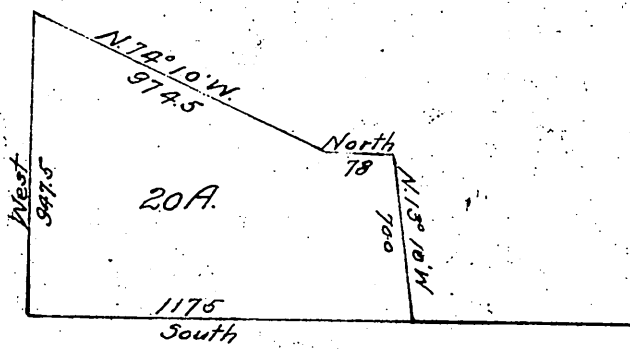


Rose Hesse Engelhardt
to
Amanda Kidwell.



Description

20 Acs. - beg. at point on W. line of Sec. 20 - T. 1 N. - R. 9 W.
947.5 ft. N. of S. line of N. 1/2 of S. W. 1/4 of said Sec. - th.
S. 74° 10' E. 974.5 ft. - th. E. 78 ft. - th. S. 13° 10' E. 700 ft. - th. W.
1175 ft. - th. N. 947.5 ft. to beg.

Recorded June 11 - 1898
at request of Grantee