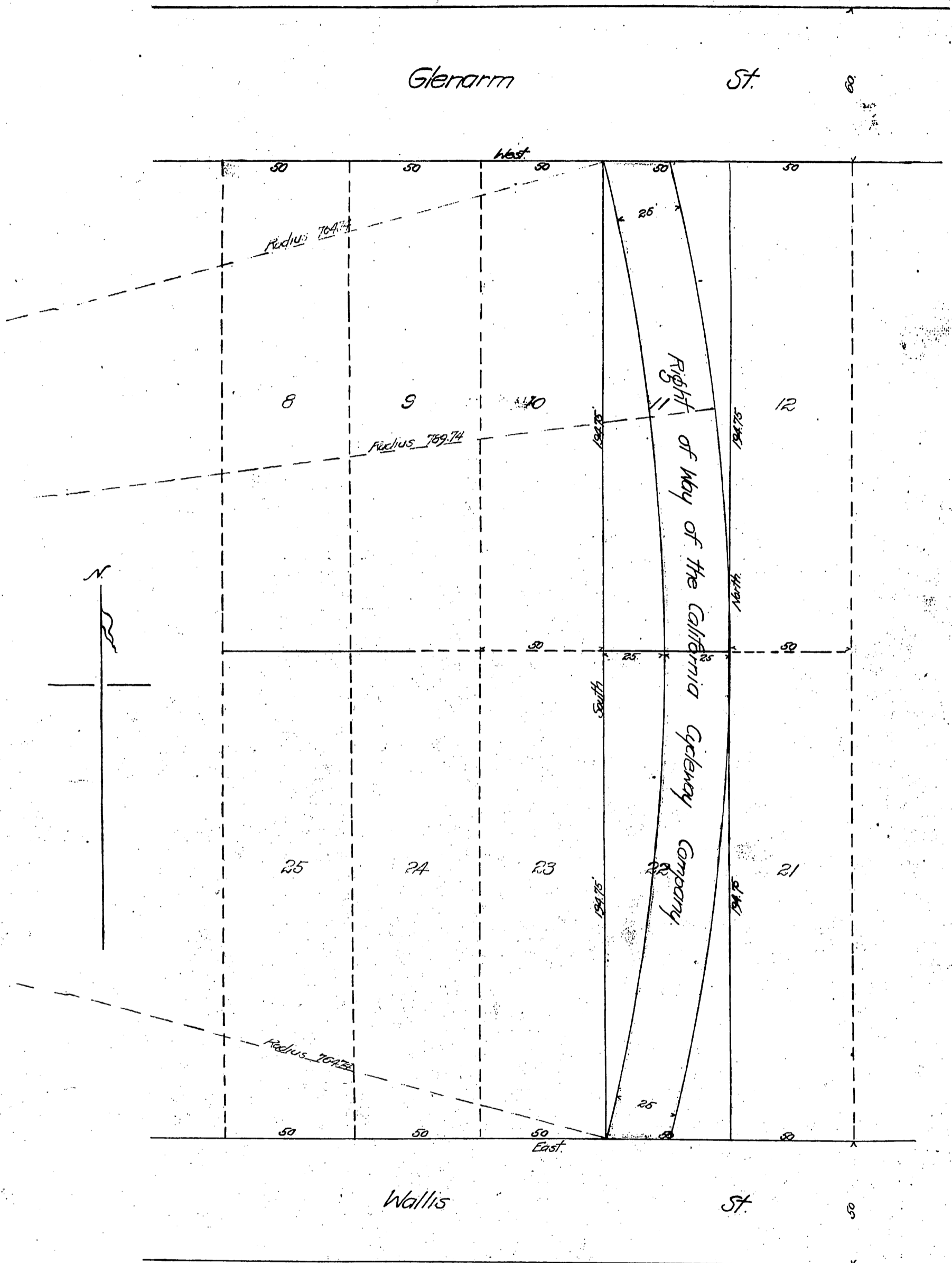


Plan of Lots 11 and 22  
of G.E. Smith's Subdivision of  
Pasadena - Cal.

DM 1317-20

87



Jean Cazaurang et ux  
to  
Cal. Cycleway Co.

Scale 1"=40'  
W.R. Stevenson C.E.  
August 4<sup>th</sup> 1899

Recorded Aug. 15, 1899  
at request of Grantee.