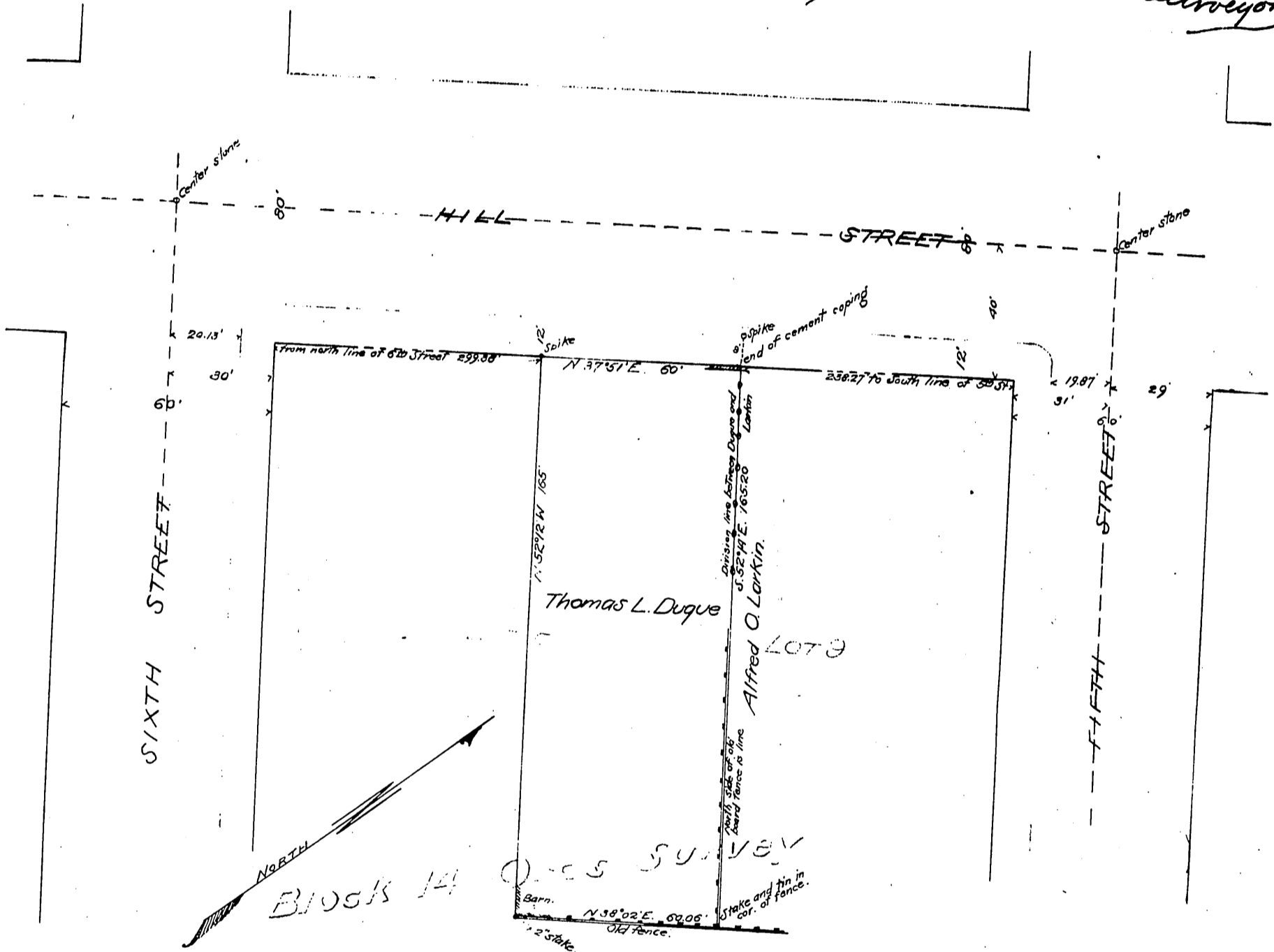


MAP
 showing line between
 Lots 8 and 9 Block 14 Ords Survey
 in the
 City of Los Angeles County of Los Angeles
 State of California.

Scale 30 feet to one inch.
 True Courses Var 17° 30' East.
 (Scale reduced to 40 ft. to 1 inch).

Surveyed in June 1900 by

V. J. Rowan
 Surveyor



Recorded July 13-1900.