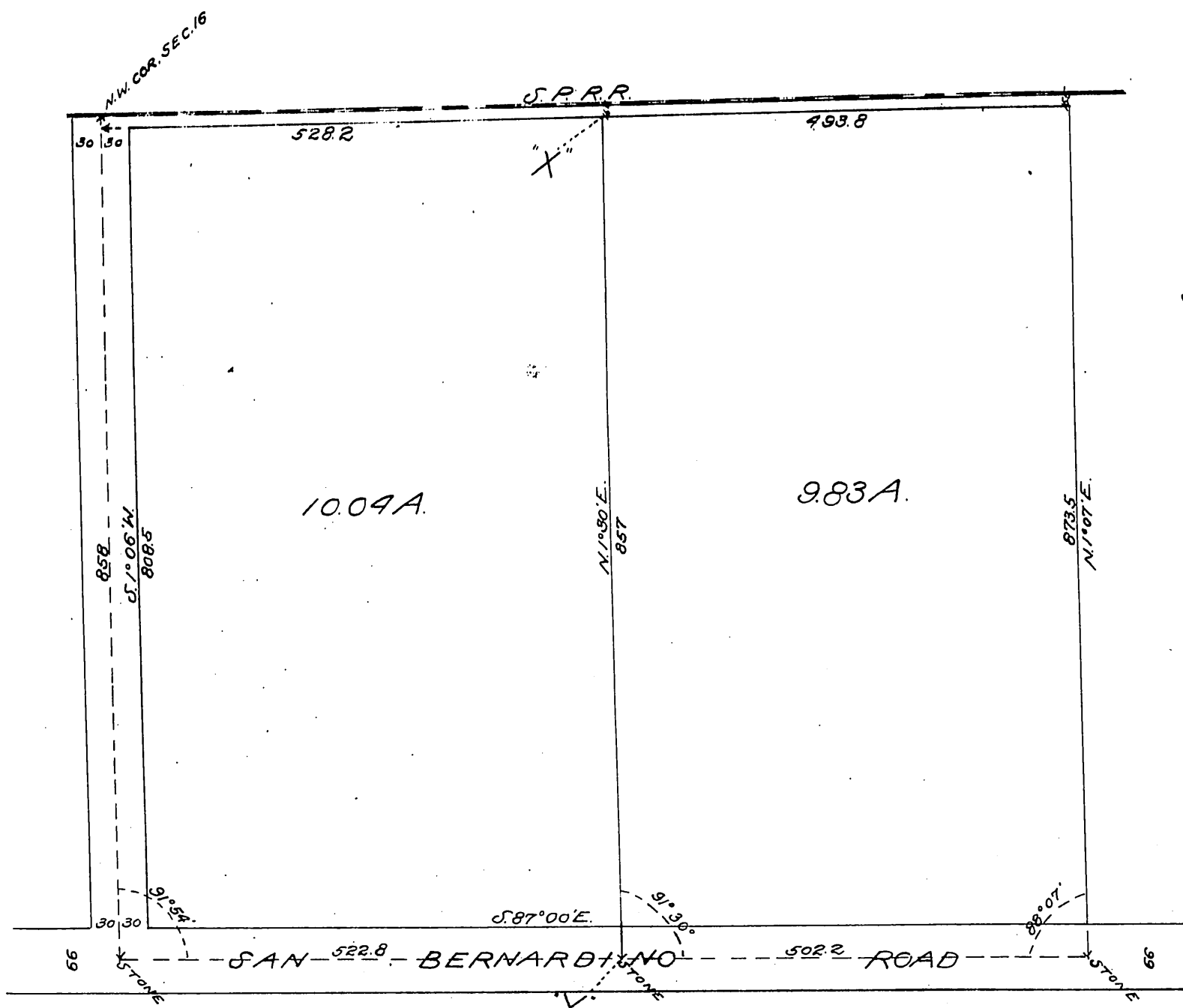


DM 1415-44

47

PLAT
 of the west part of
 the fractional North one half
 of Section 16, T.15. R.10W. S.B.M.
 Scale 100 feet = one inch.
 (Scale reduced to 150 feet to 1 inch)
 Surveyed September 1900.
 By W.E. Mount C.E.



Recorded Oct. 9. 1900.