

DM 1417-292

54

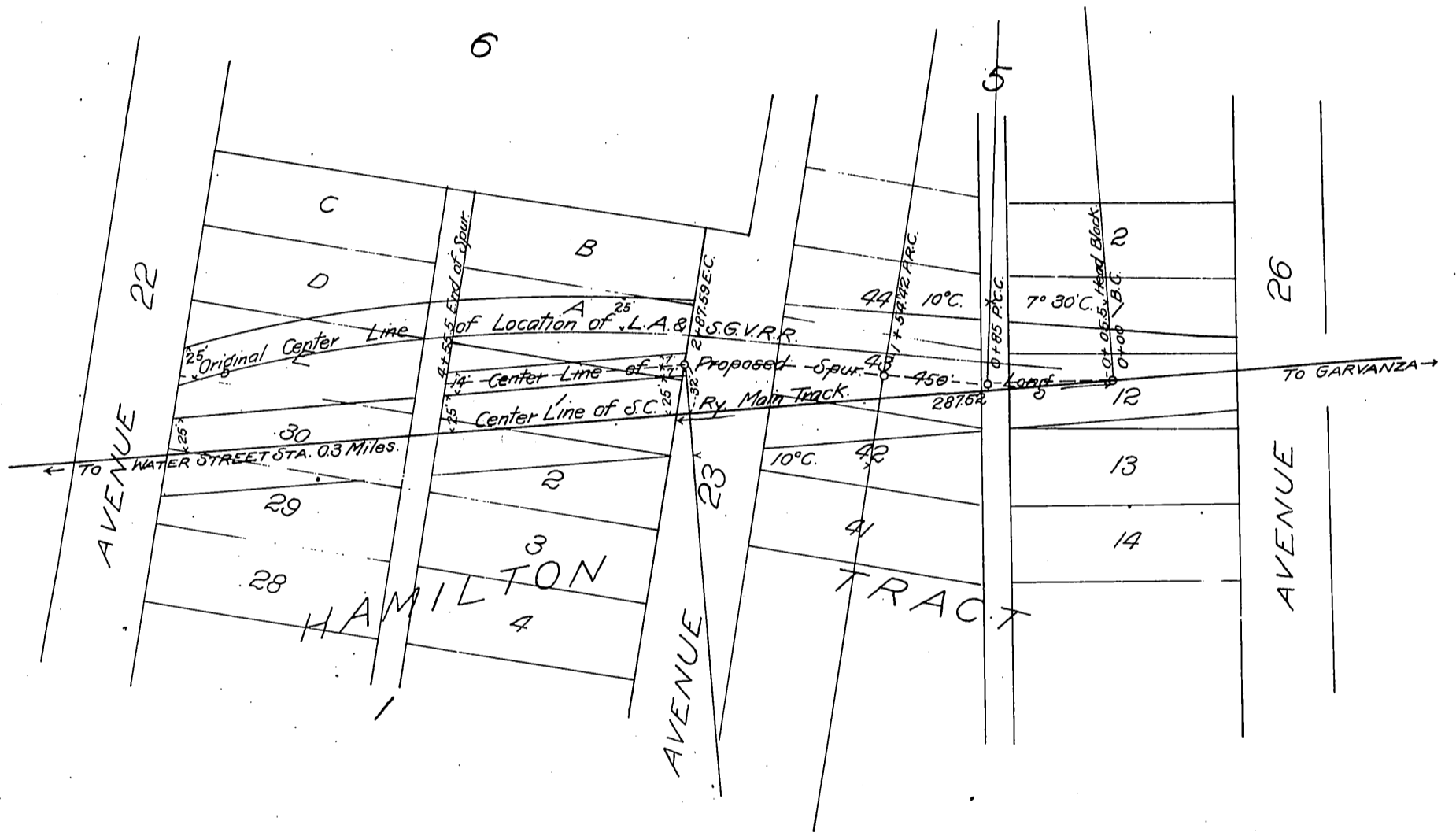
S. C. Ry. Co.
 Drawing No. C-3-2161.
 Proposed 450 foot Spur for Howard Oil Co.
 Located $\frac{3}{10}$ of a mile East of Water Street Station.
 Los Angeles, Cal.

Los Angeles, Cal.
 Sept. 16th 1900.

R. B. Burns,
 Chief Engineer.

S. C. Ry. Co.'s Right of way which Howard Oil Co.
 propose to purchase, enclosed in red lines.

S. C. Ry. Co.
 to
 Howard Oil Co.



Recorded Feb 23 1901.