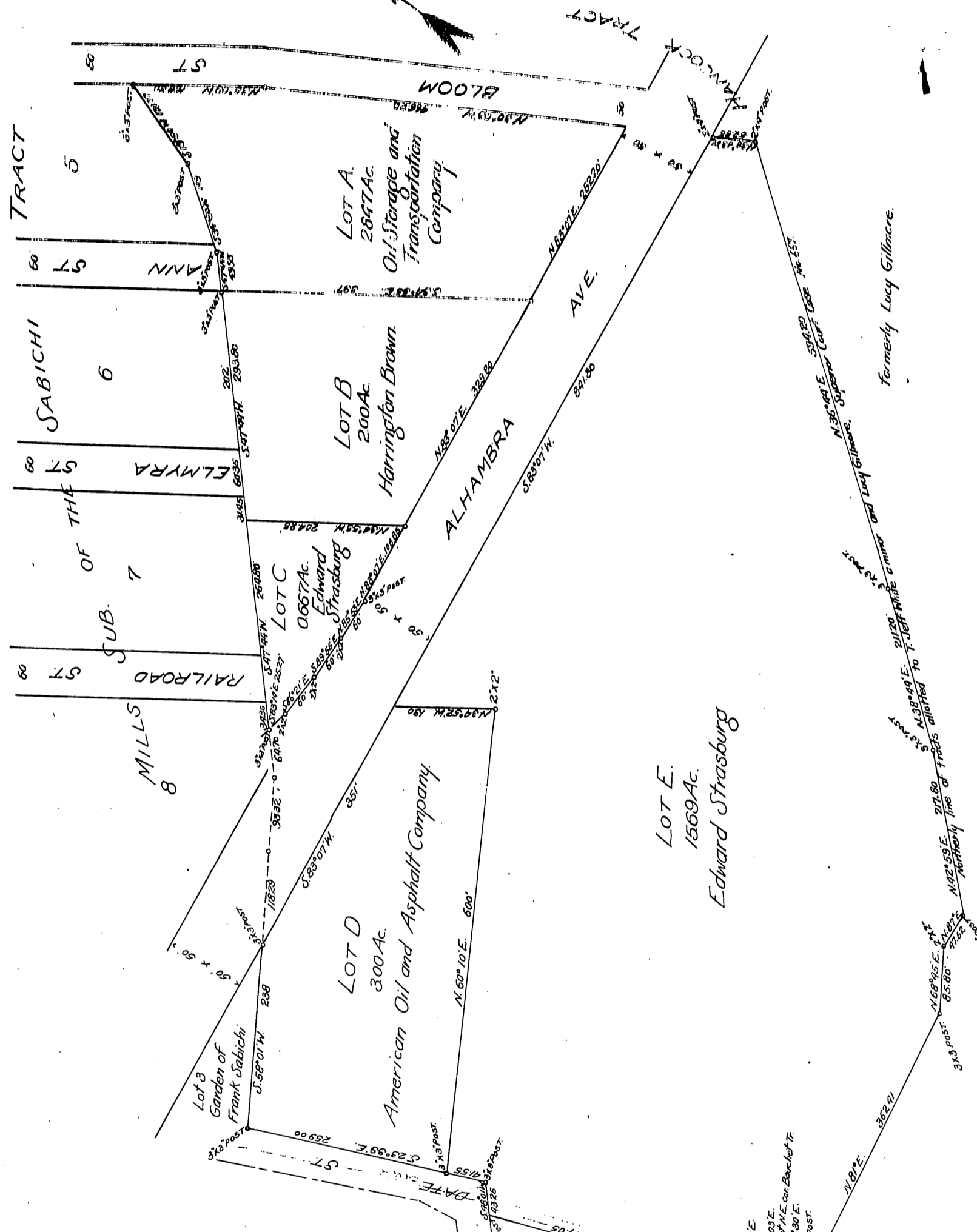


55

MAP
OF THE
SEPULVEDA VINEYARD TRACT
located in the
City of Los Angeles, County of Los Angeles
State of California
showing
the partition of said tract made by the referees in partition appointed by order of the Superior Court of the County of Los Angeles State of California on the 13th day of November A.D. 1900. Surveyed under direction of the referees in partition in December, 1900 by
True Courses
Var. 14°30' East

J. J. Rowan
Surveyor



Richard Egan
O. J. Rowan
W. J. Markburn } Referees in Partition.

Superior Court Case # 33773.
American Oil and Asphalt Co. Plaintiffs.
vs.
Aurilio & Sepulveda et al. Defendants.

Opening Bauchet St. through Lot E - C.F. 2033
Pors. Alhambra Ave. & Bloom St. Vac. by Ord. 85810, 87322
Por. lot A to Housing Auth. ~ E-56-27, OR. 19217-154

Recorded Jan 21-1991.

Formerly Lucy Gillmore.

Formerly T. Jeff White a minor.