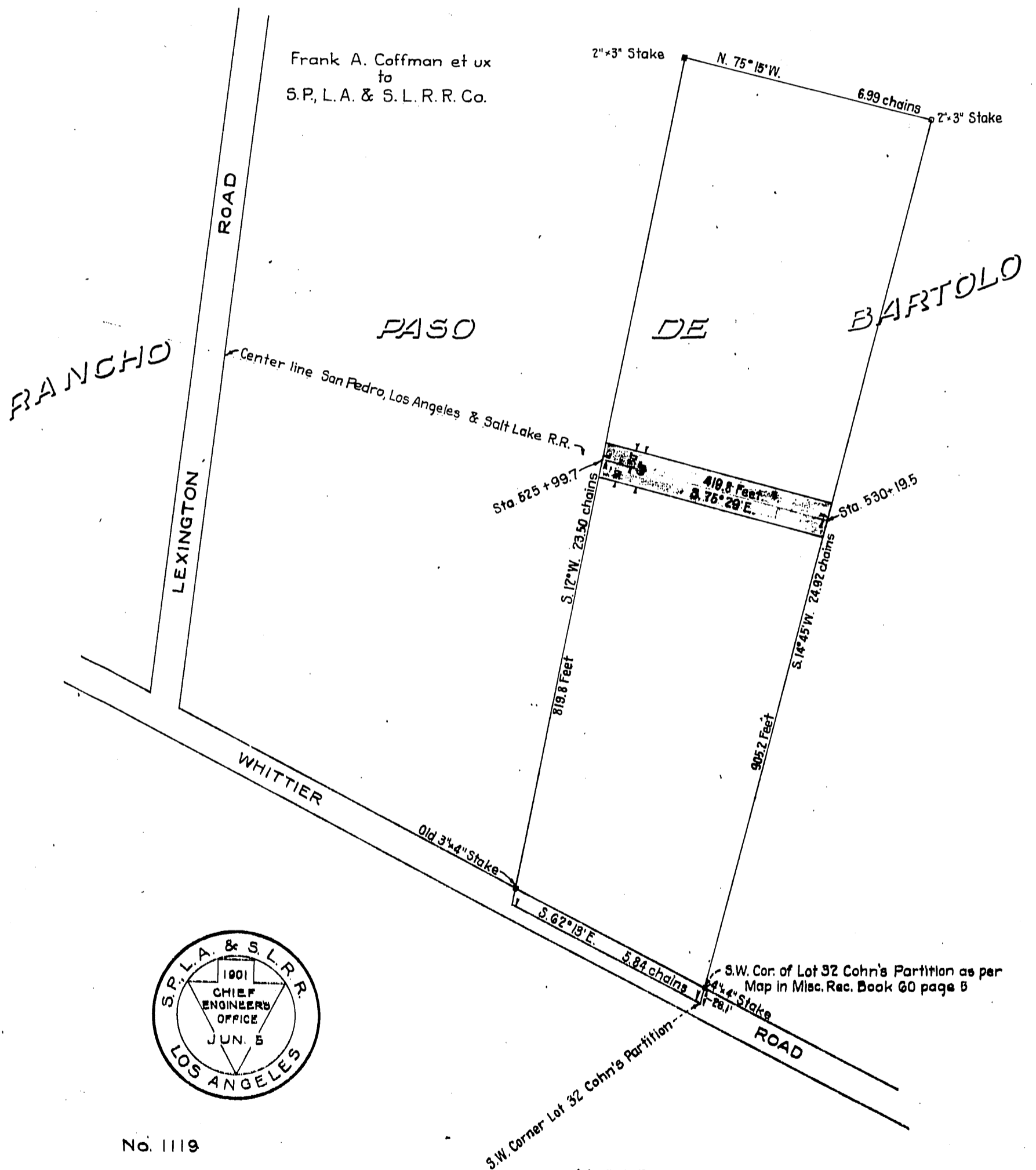




MAP
of that portion of the
RANCHO PASO DE BARTOLO
Owned by Frank A. Coffman
SHOWING RIGHT OF WAY OF
S.P.L.A. & S.L.R.R.CO.

SCALE 200 FT. TO 1 IN.



Frank A. Coffman et ux
to
S.P., L.A. & S.L.R.R. Co.



No. 1119

M. 15-165
Recorded June 10, 1901.