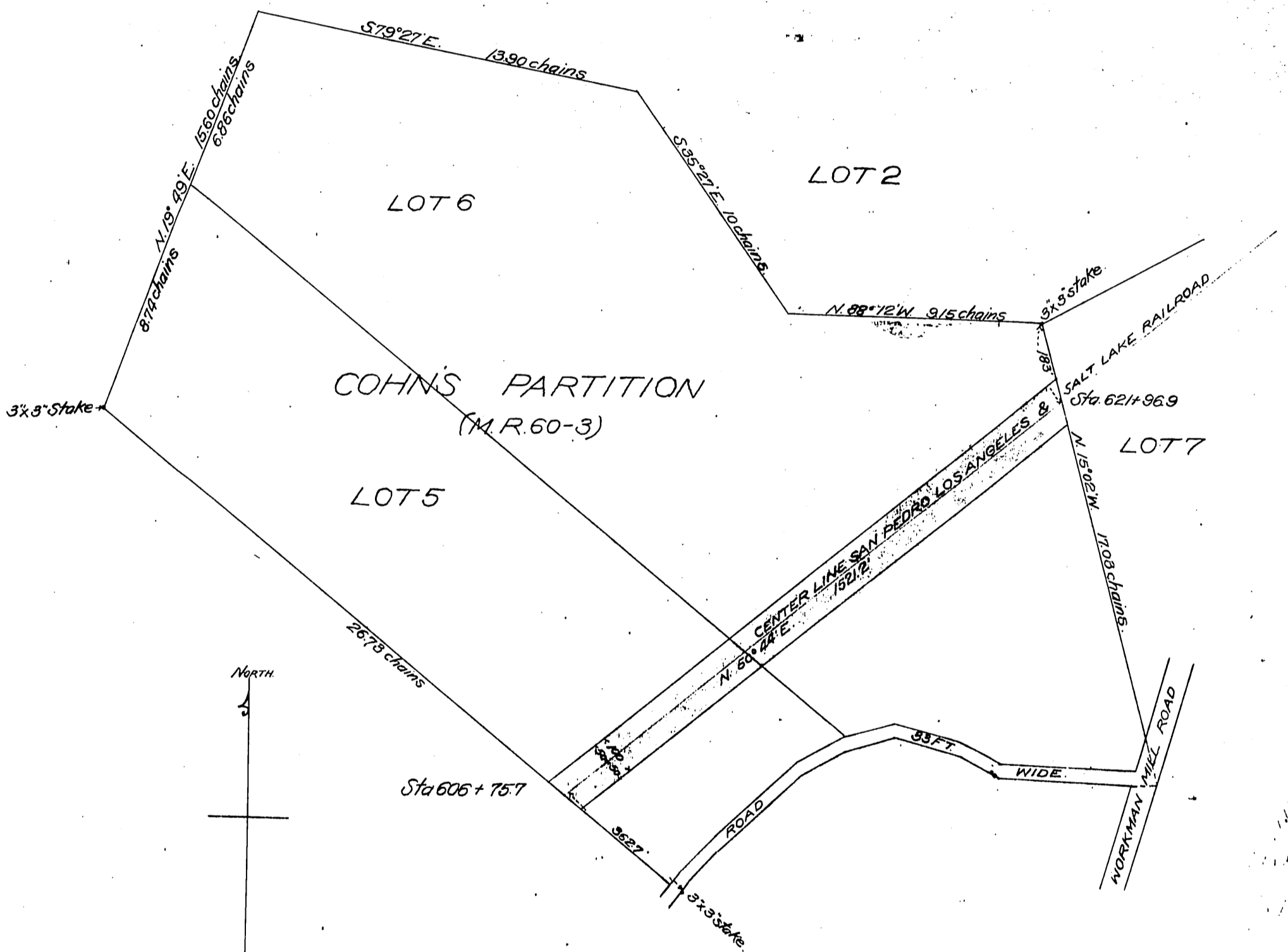


Map of
 LOTS 5 & 6 COHNS PARTITION
 BEING PROPERTY OF CHAS. S. SANDERSON
 SHOWING RIGHT OF WAY OF
 S. P. L. A. & S. L. R. R. CO.
 Scale of Map 200ft. = 1inch.

Charles S. Sanderson, et al
 to
 S. P. L. A. & S. L. R. R. Co.



Scale reduced to 300' = 1inch.

Recorded Jul. 15, 1901.