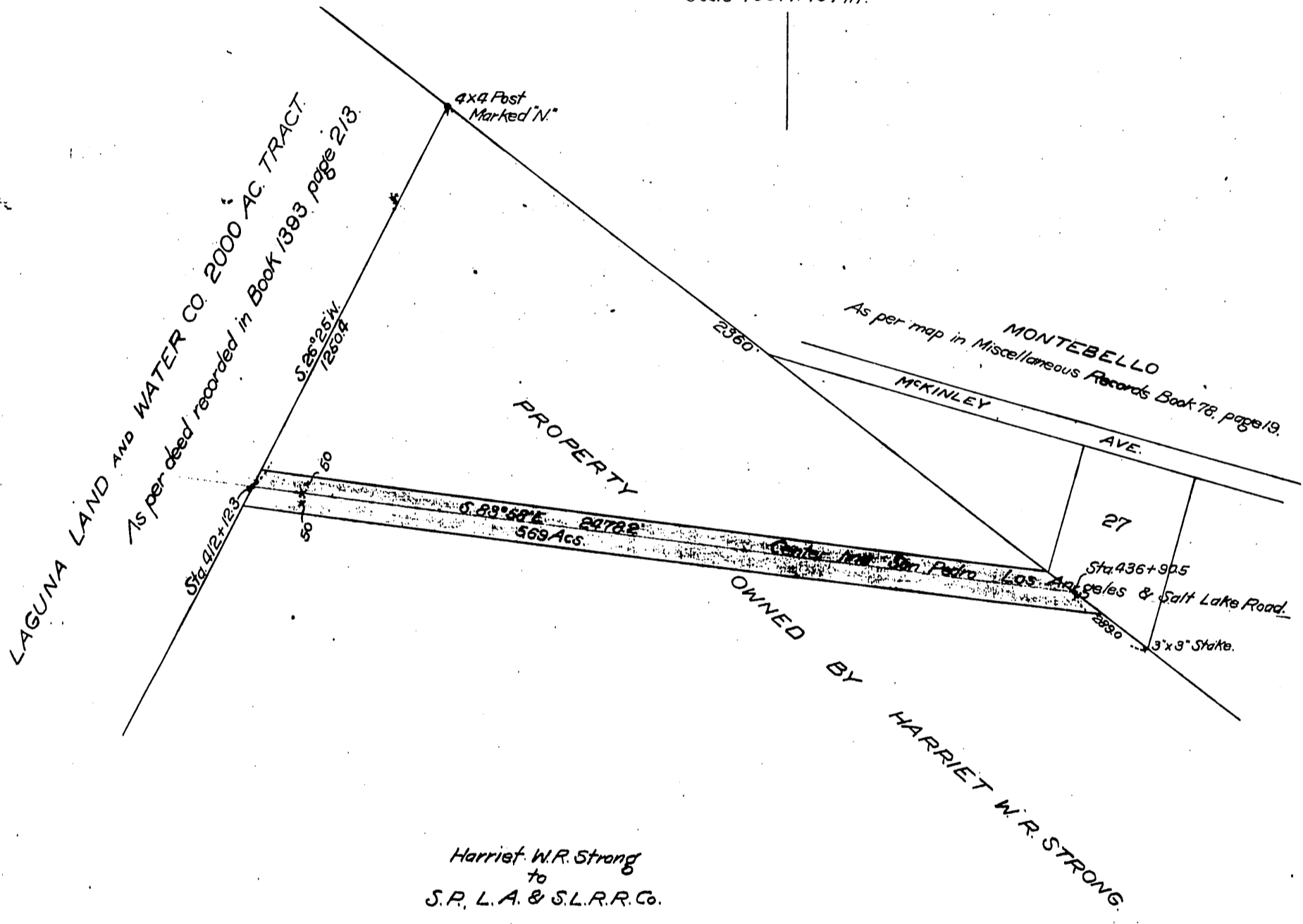


MAP  
 of that portion of the  
 RANCHO SAN ANTONIO  
 owned by  
 HARRIET W.R. STRONG  
 showing right of way  
 S. P., L.A. AND S.L.R.R.  
 Scale 400 ft. to 1 in.



Harriet W.R. Strong  
 to  
 S.P., L.A. & S.L.R.R. Co.

Recorded June 11, 1901.