

E. J. Baldwin.
to
S.P., L.A. & S.L.R.R. Co.

MAP

Of that portion of the

RANCHO LA PUENTE

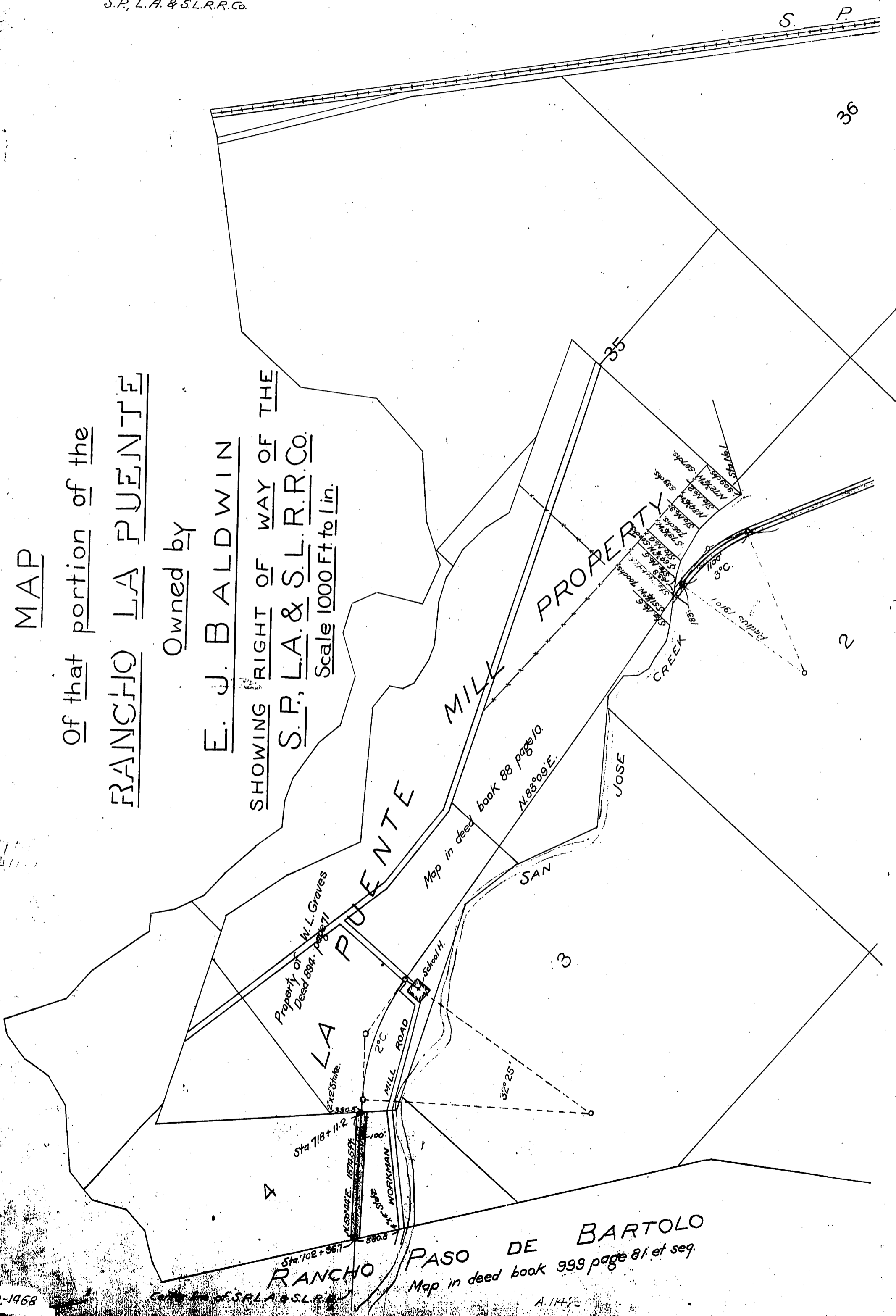
Owned by

E. J. BALDWIN

SHOWING RIGHT OF WAY OF THE

S.P., L.A. & S.L.R.R. CO.

Scale 1000 Ft. to 1 in.



RANCHO LA PUENTE

PASO DE BARTOLO
Map in deed book 399 page 81 et seq.