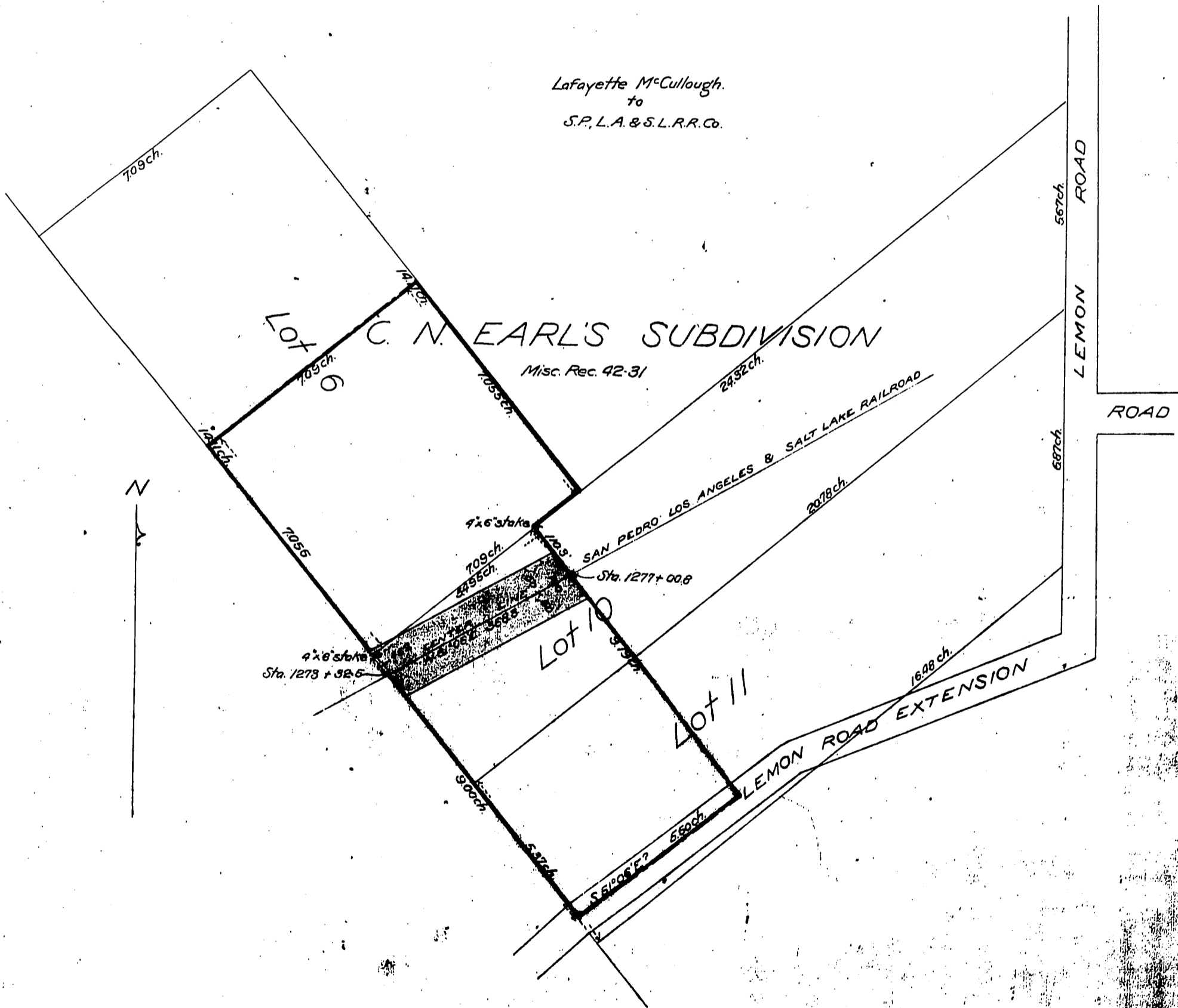


Map of
 Property of Lafayette McCullough
 IN C. N. EARL'S SUBDIVISION
 showing Right of Way of the
 SAN PEDRO, LOS ANGELES & SALT LAKE RAILROAD COMPANY
 Scale 200 feet to 1 inch.

Lafayette McCullough.
 to
 S.P., L.A. & S.L.R.R. Co.



Recorded Aug 19, 1901.

A. L. 10-11/8