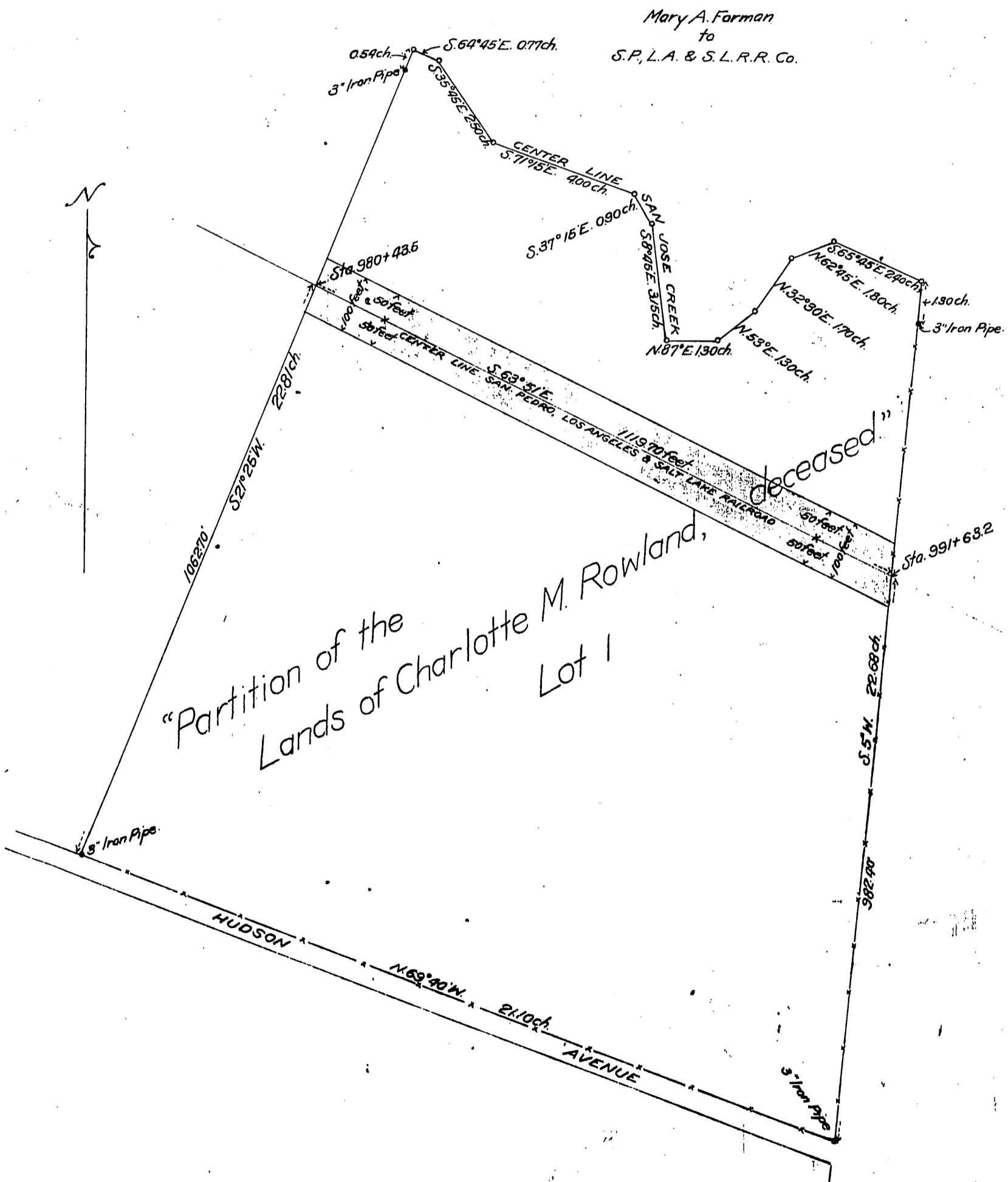


Map of  
 Lot 1, Partition of the Lands of Charlotte M. Rowland, deceased.  
 IN THE RANCHO LA PUENTE  
 showing right of way of the  
 SAN PEDRO, LOS ANGELES & SALT LAKE RAILROAD COMPANY  
 Scale 200 feet to 1 inch.



Recorded Aug. 24, 1901.