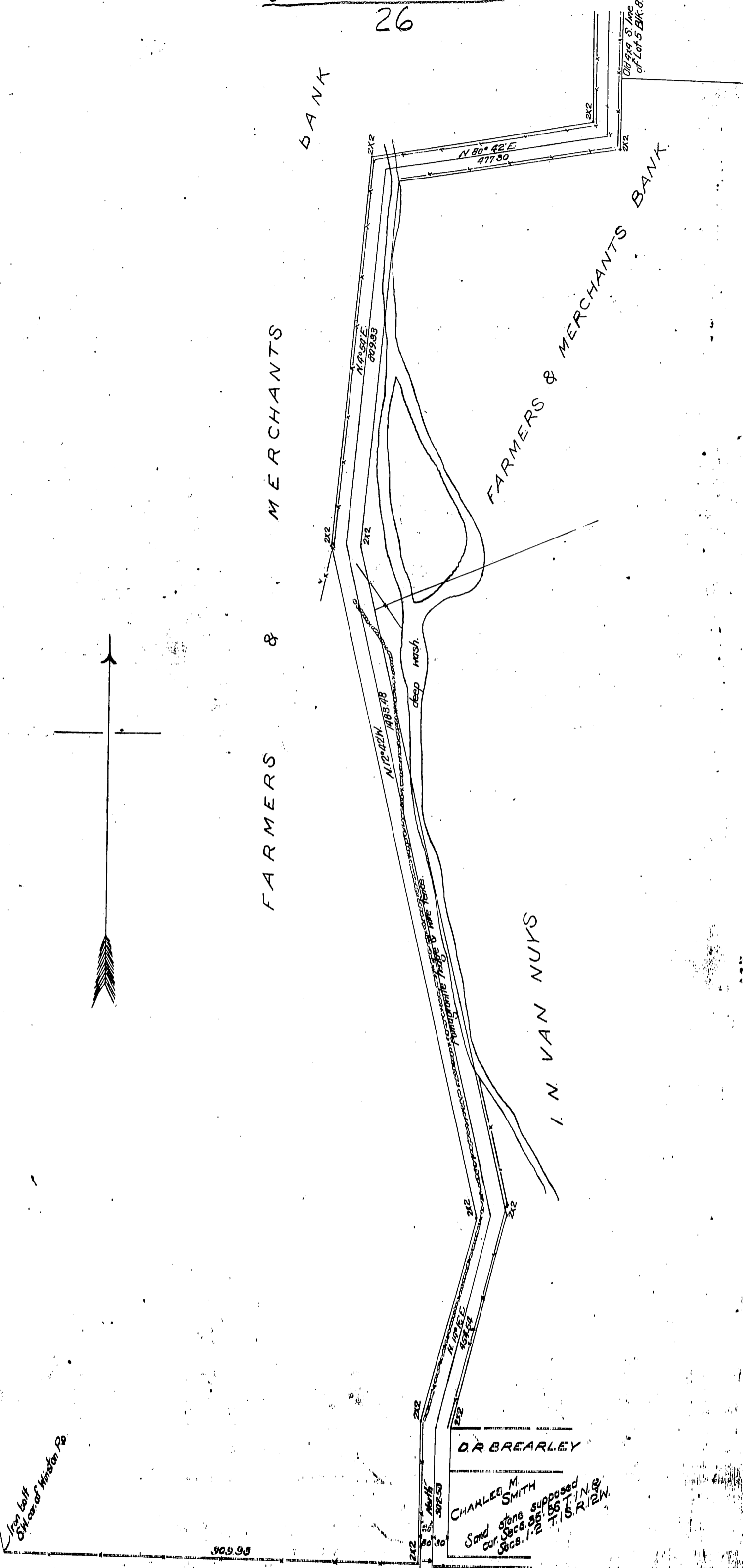
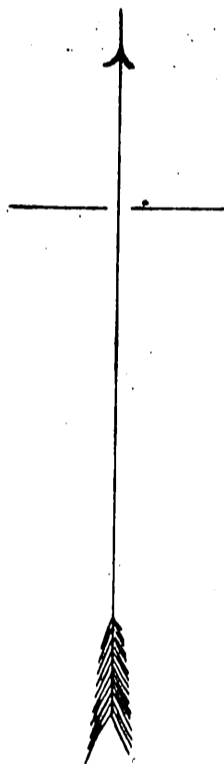


DM 1493-319

26

319



Iron Bolt
6 1/2\"/>

908.93

O. R. BREARLEY

CHARLES M. SMITH
Sand stone supposed
cut Secs. 35, 36 T. 1 N. 8
Sgs. 1-2 T. 1 S. R. 12 W.

Platted Oct 30, 1901

D-1402