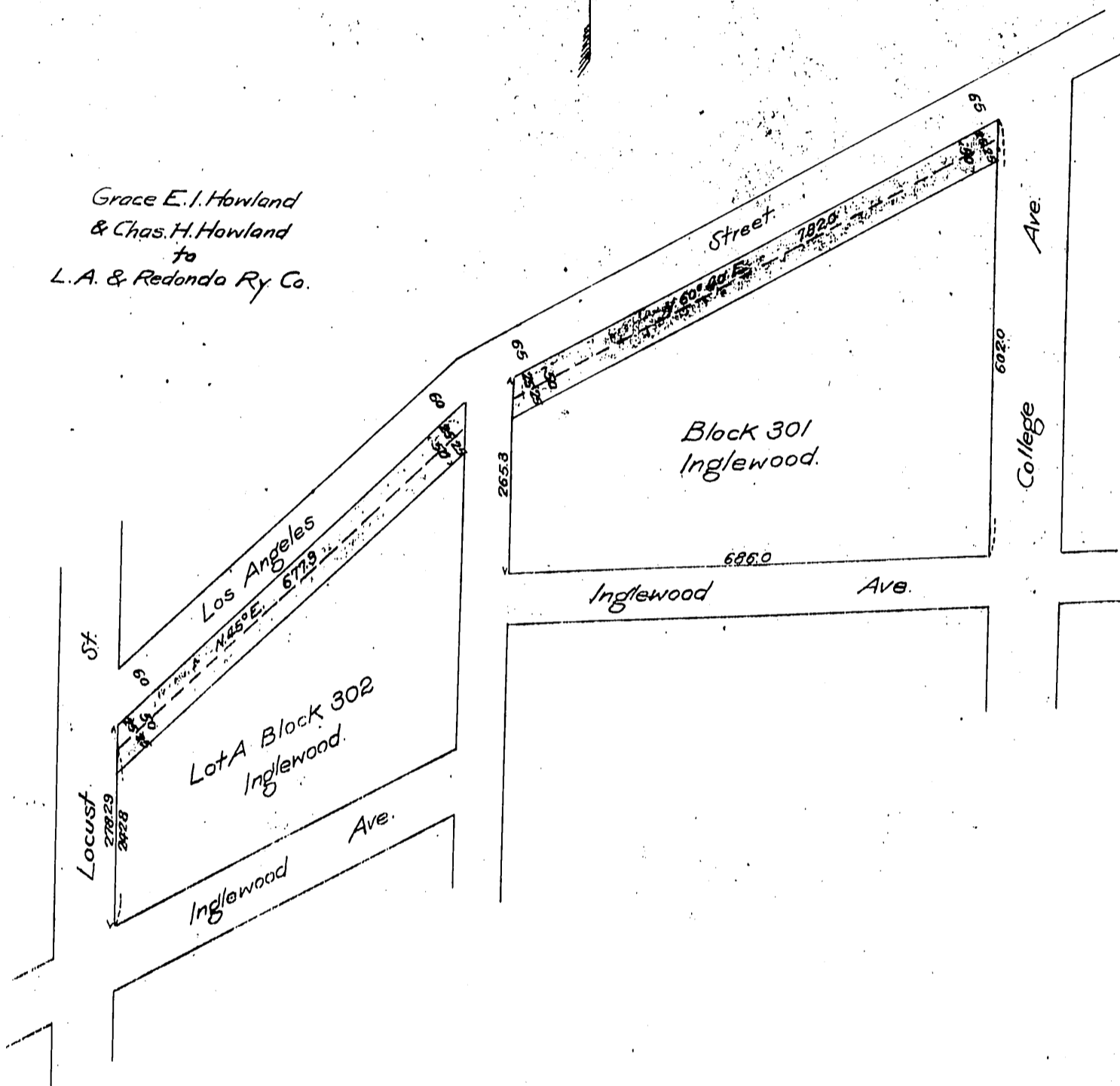


DM 1533-261

60

N
↓
Right of Way
of the
L.A. and Redondo Ry.
through
Lot A, Block 302 and Block 301
INGLEWOOD
Scale 1 inch = 200 ft.

Grace E. I. Howland
& Chas. H. Howland
to
L.A. & Redondo Ry. Co.



Recorded Feb. 15, 1902

M. 24-16