

DM 1562-7

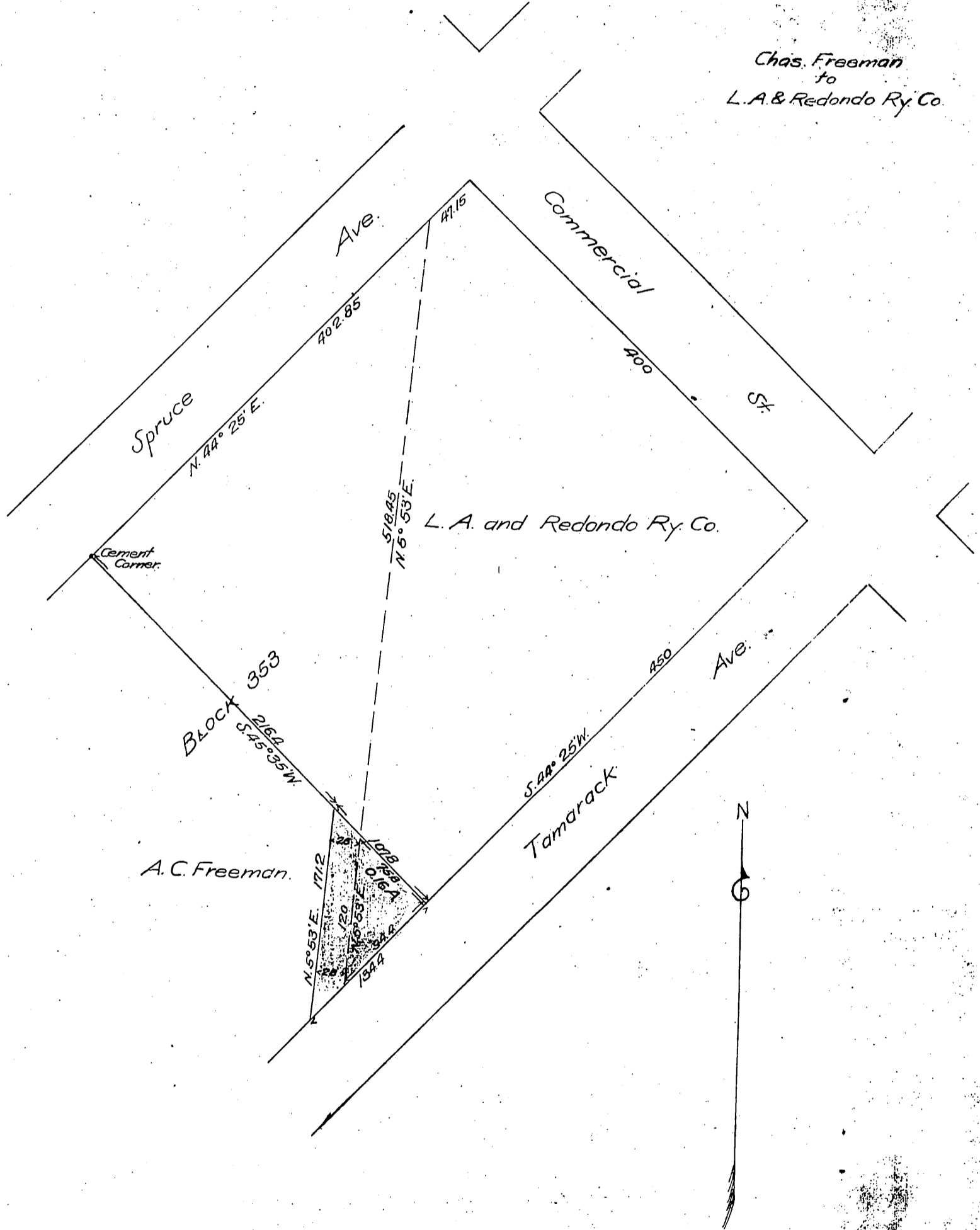
89

7

Right of Way of
L.A. and Redondo Ry.
through
portion of Block 353
Inglewood.

Scale 1 inch = 100 ft.

Chas. Freeman
to
L.A. & Redondo Ry. Co.



Recorded Mar. 5, 1902.

M. 23-157

A. 98-28

D-1562.