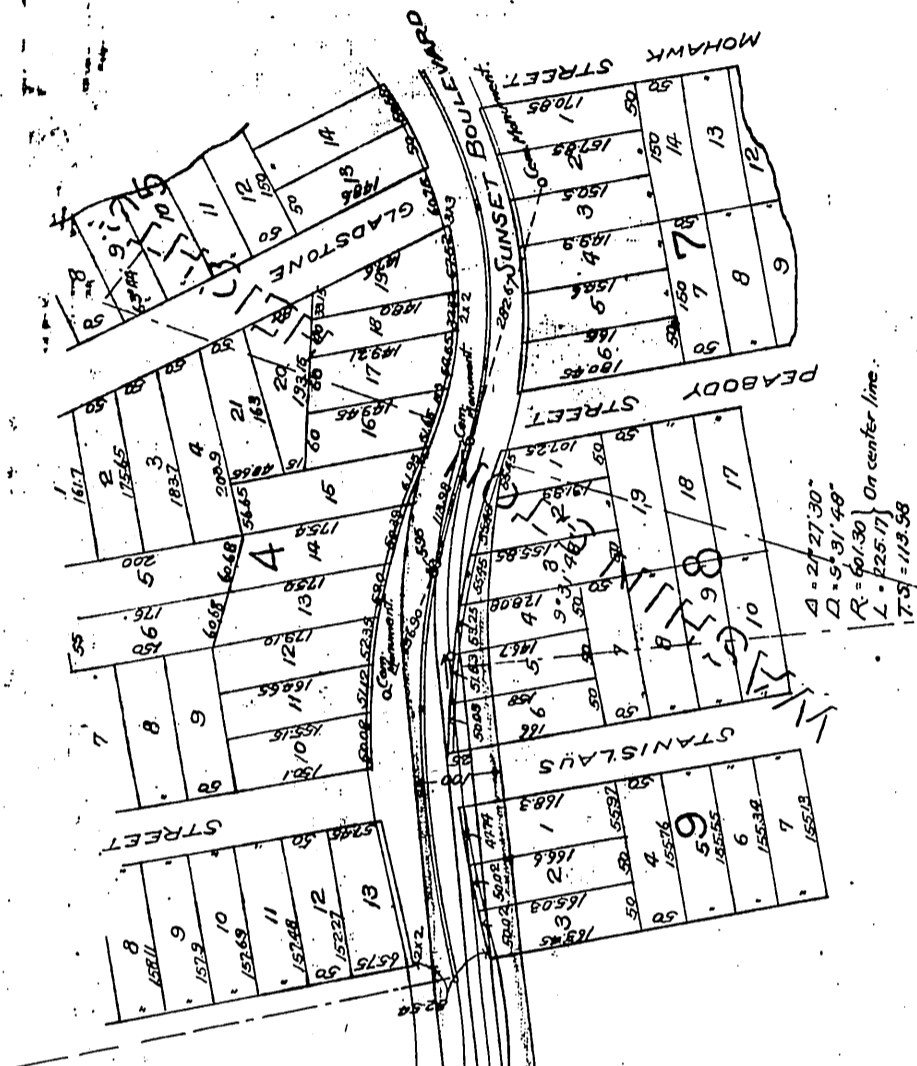


Geo. H. Smith,
Geo. S. Patton
Anne O. Banning
S. G. Patton
A. B. Chapman
Hermann Deutsch
Childs Estate
& L.A.P.R.R. Co } to L.A. City

L.A.P.R.R. Co. reserves right
to operate rail road on 25
foot strip.



$\Delta = 27' 27.30''$
 $\Delta = 5' 31' 40''$
 $R = 607.30$ On center line.
 $L = 725.17$
 $7.5 = 113.58$

Lot 2 Block 28 H.S.
G. H. SMITH.

$\Delta = 20' 56.90''$
 $\Delta = 5''$
 $R = 1156.86$ On center line.
 $L = 418.66$
 $T.S. = 211.72$

