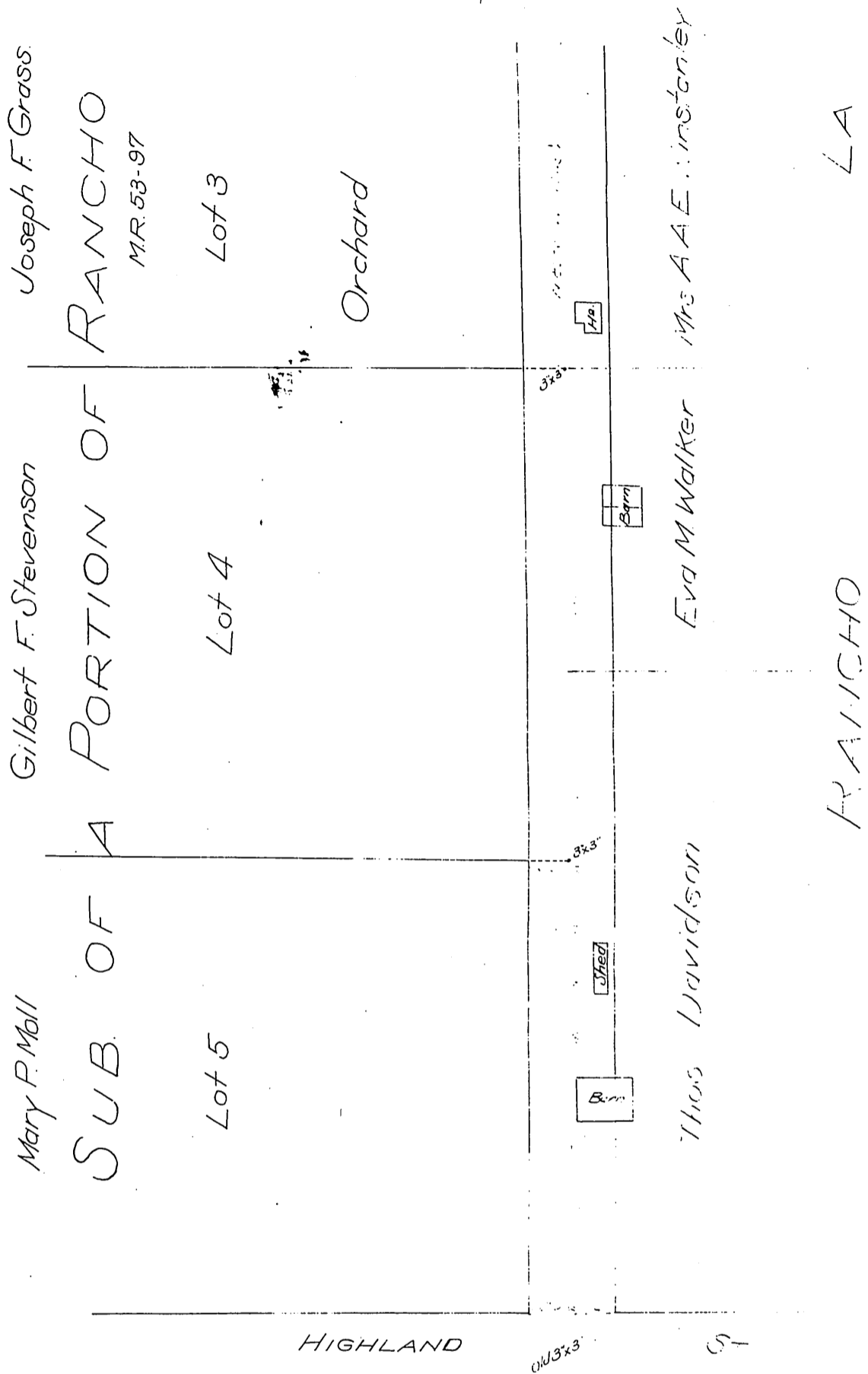


DM 1621-287

42



HIGHLAND ST

Thos. Hudson
 Joseph F. Grass
 Wm. Squire
 Eva M. Walker
 Fannie L.G. Walker
 Gilbert F. Stevenson
 A.A.E. Winstanley
 L.J. Quint
 Thos. Davidson &
 Margaret Irvine
 to
 L.A. County.

See L:3-05

Recorded Oct. 2, 1902.