

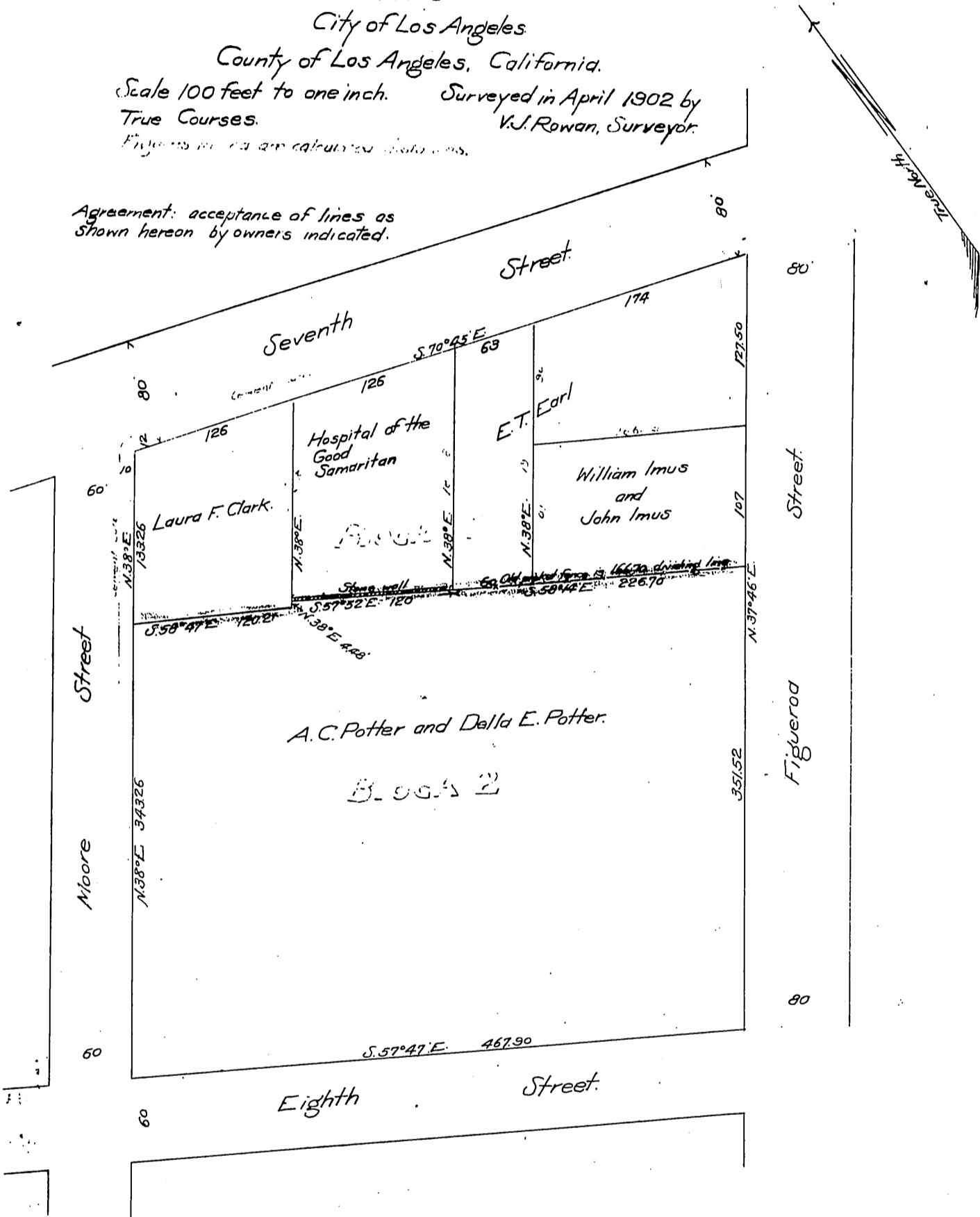
DM 1687-71

63

MAP  
 showing the dividing line between  
 Blocks 1 and 2 Nichols Addition  
 to  
 West Los Angeles  
 in the  
 City of Los Angeles  
 County of Los Angeles, California.

Scale 100 feet to one inch. Surveyed in April 1902 by  
 True Courses. V.J. Rowan, Surveyor.  
 Figures in red are calculated distances.

Agreement: acceptance of lines as  
 shown hereon by owners indicated.



Recorded Oct. 20, 1902.

13 F.R.B.