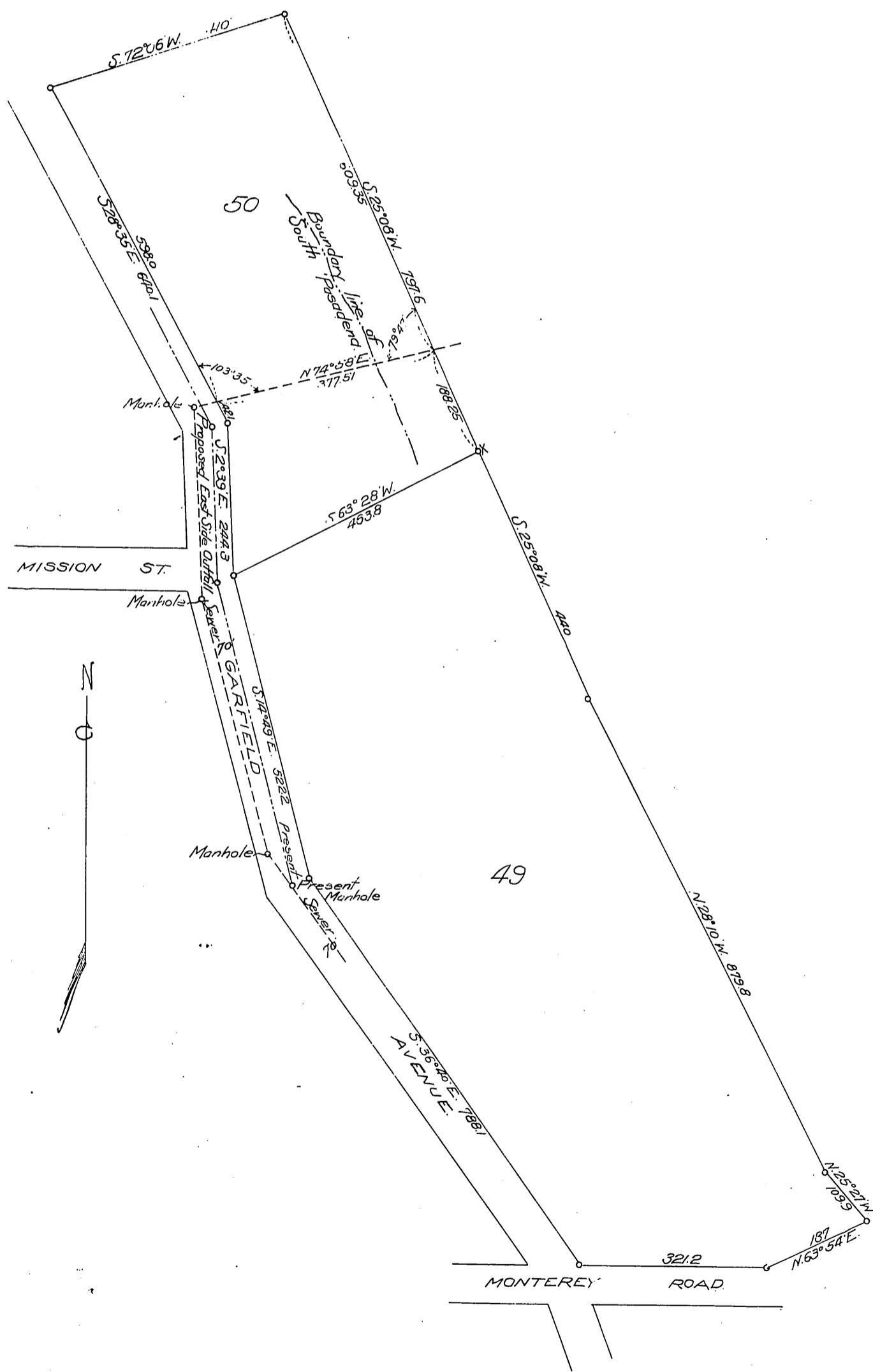


69

MAP

Showing Sewer Right of Way
 Across Lot number 50 of Resubdivision
 of Raymond Improvement Co Tracts -
 Map to accompany deed from Raymond
 Improvement Co to the City of Pasadena.
 Scale 1 in. = 200 ft.
 Pasadena, Cal.
 August, 1902.

T.D. Allin.
City Engineer.



Recorded Dec. 10, 1902.