

Note: The curative act entitled, "An act to cure defects in maps or plats filed for record prior to January 1, 1917 --- (1917 Statutes and Amendments, Chapter 790 page 1653) applies to this map and makes it a legal subdivision. See note on County Surveyor's copy of M.R. 196-306.

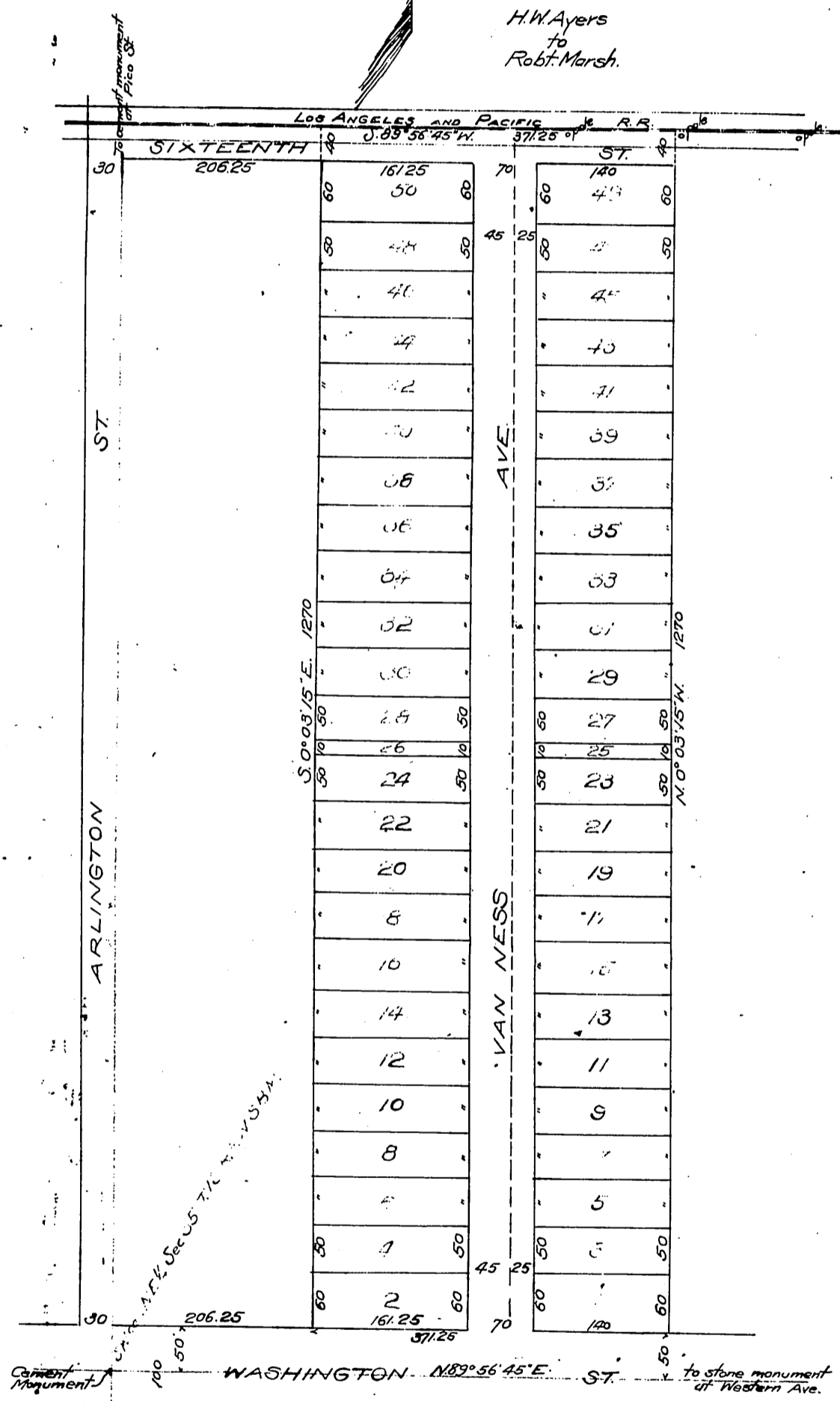
DM 1709-44

Co. Sur. Apr. 5, 1921.

70

Map of
WEST END HEIGHTS
 Being a subdivision of the S. 1/2 of the
 E. 1/2 of the W. 35 Acres of the N.E. 1/4 of
 Sec. 35, T. 1 S., R. 14 W., S.B.M.
 Surveyed Oct. 1902.
 by E. D. Severence, C.E.
 Scale 100 feet = 1 inch.

H.W. Ayers
 to
 Robt. Marsh.



Streets & Ave. dedicated for
 highway purposes by
 H.W. Ayers - Owner.

Van Ness Ave. D. 5144-264 D. 16-204
 Washington St. chg. to Washington Blvd. - Ord. 684

Recorded Dec. 1, 1902.

Sh. 5

1745/2 sh. 5 to record.