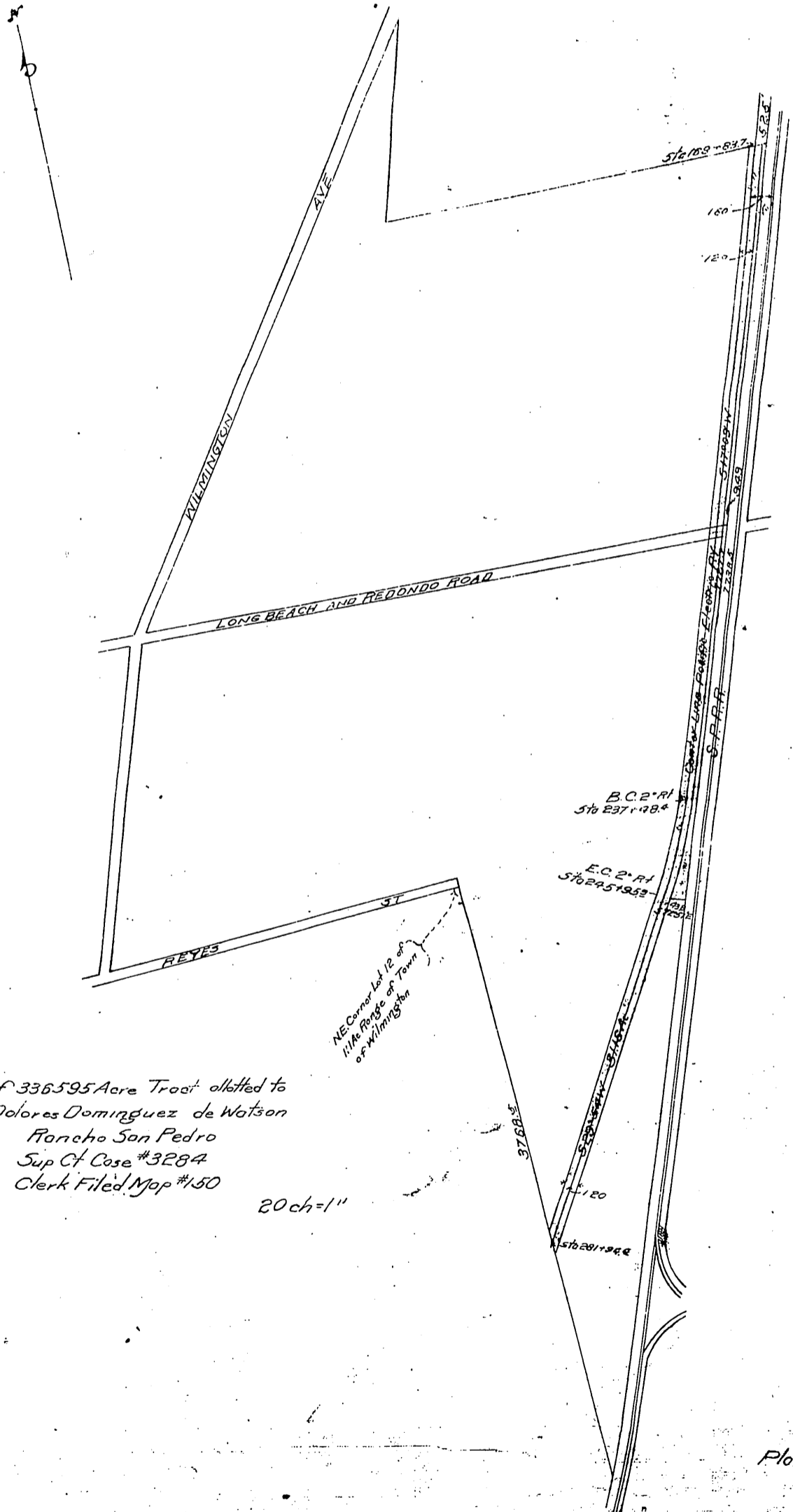


DM 1835-256

82

Maria Dolores Dominguez de Watson  
to  
Pacific Electric Railway Company



Part of 336595 Acre Tract allotted to  
Maria Dolores Dominguez de Watson  
Rancho San Pedro  
Sup Ct Case #3284  
Clerk Filed Map #150

20 ch = 1"

Recorded Aug 8 1903