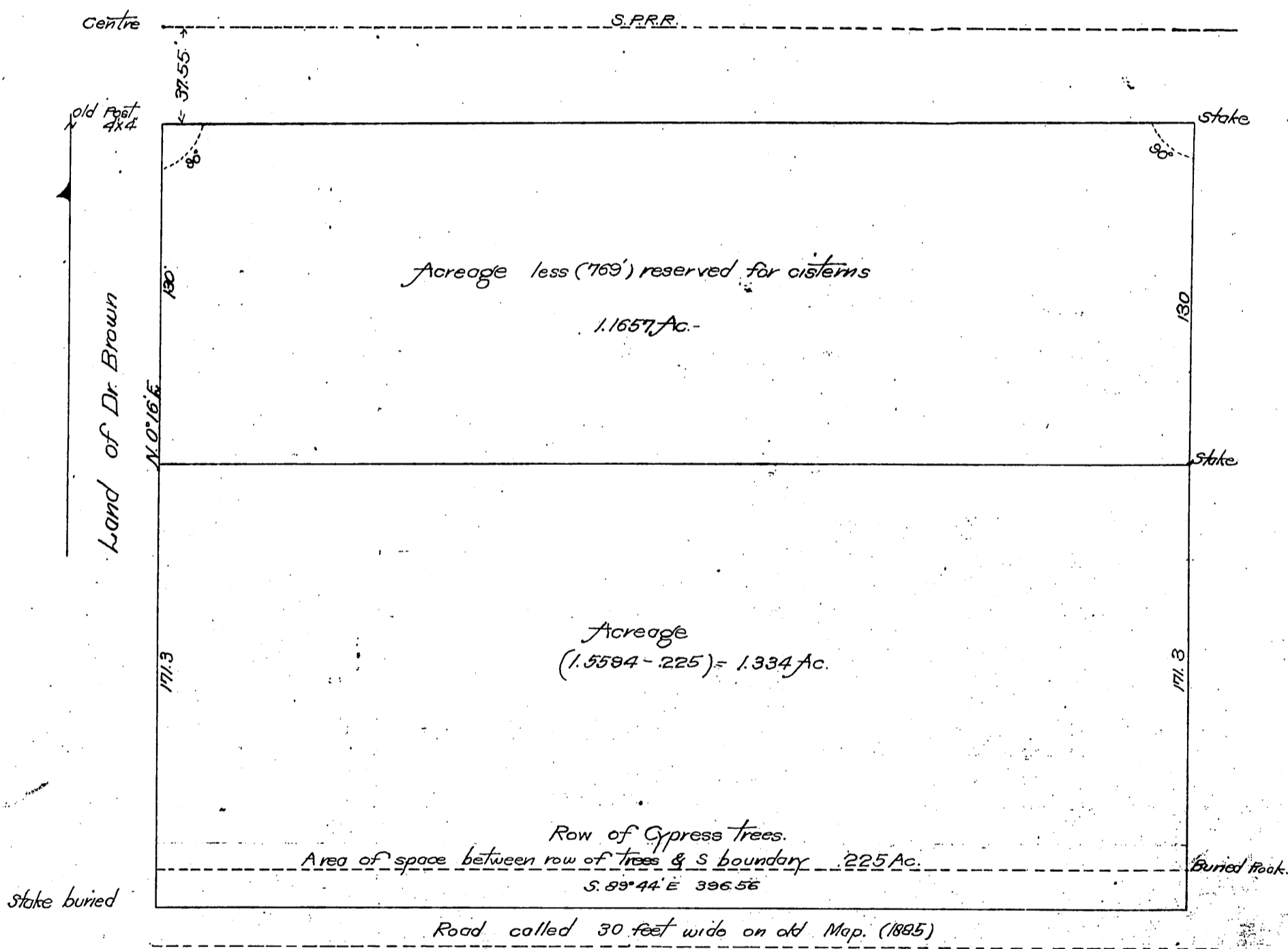


The Scottish Californian Orange & Vineyard Co.
to
John Durin
Elizabeth L. Kenney

1 N
E 102

Plat of a Tract of Land (part of Lot 11)
In the Rancho Azusa de Duarte County of
Los Angeles California
Surveyed April 1903 by H. Kerr
Surveyor Los Angeles
Scale 1 inch = 50 feet.



Recorded Aug 26. 1903