

DM 1898-64

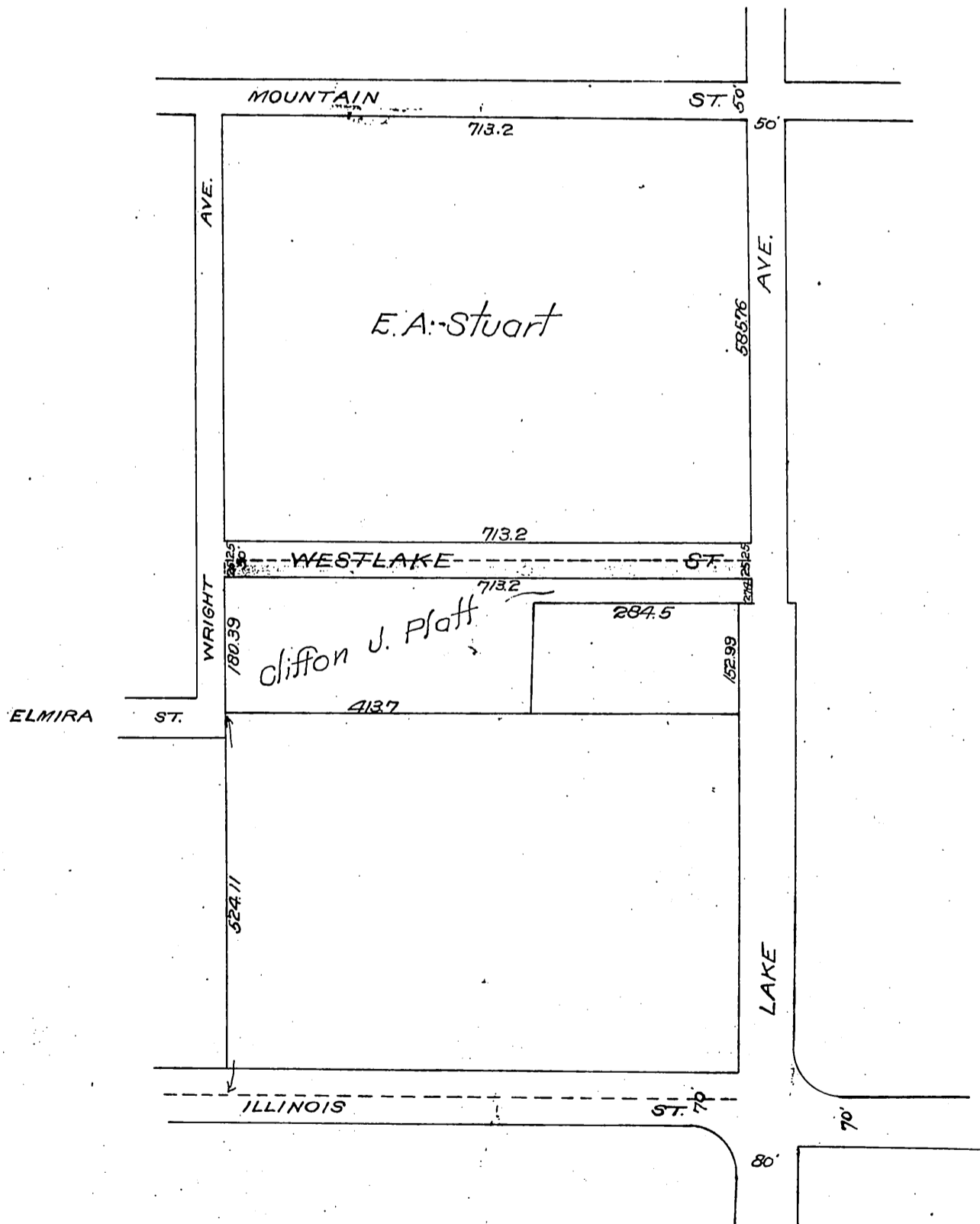
22

64

1012
501
1756

Clifton J. Platt
to
County of Los Angeles.

Map more clearly defining a strip of land fifty feet in width by seven hundred thirteen and two tenths feet in length in the Grogan Tract dedicated in accompanying deeds executed by Clifton J. Platt and E. A. Stuart et ux or to the County of Los Angeles, of the State of California. —



Recorded Sep. 19, 1903.

Sh. 7
1136