

DM 1905-176

37

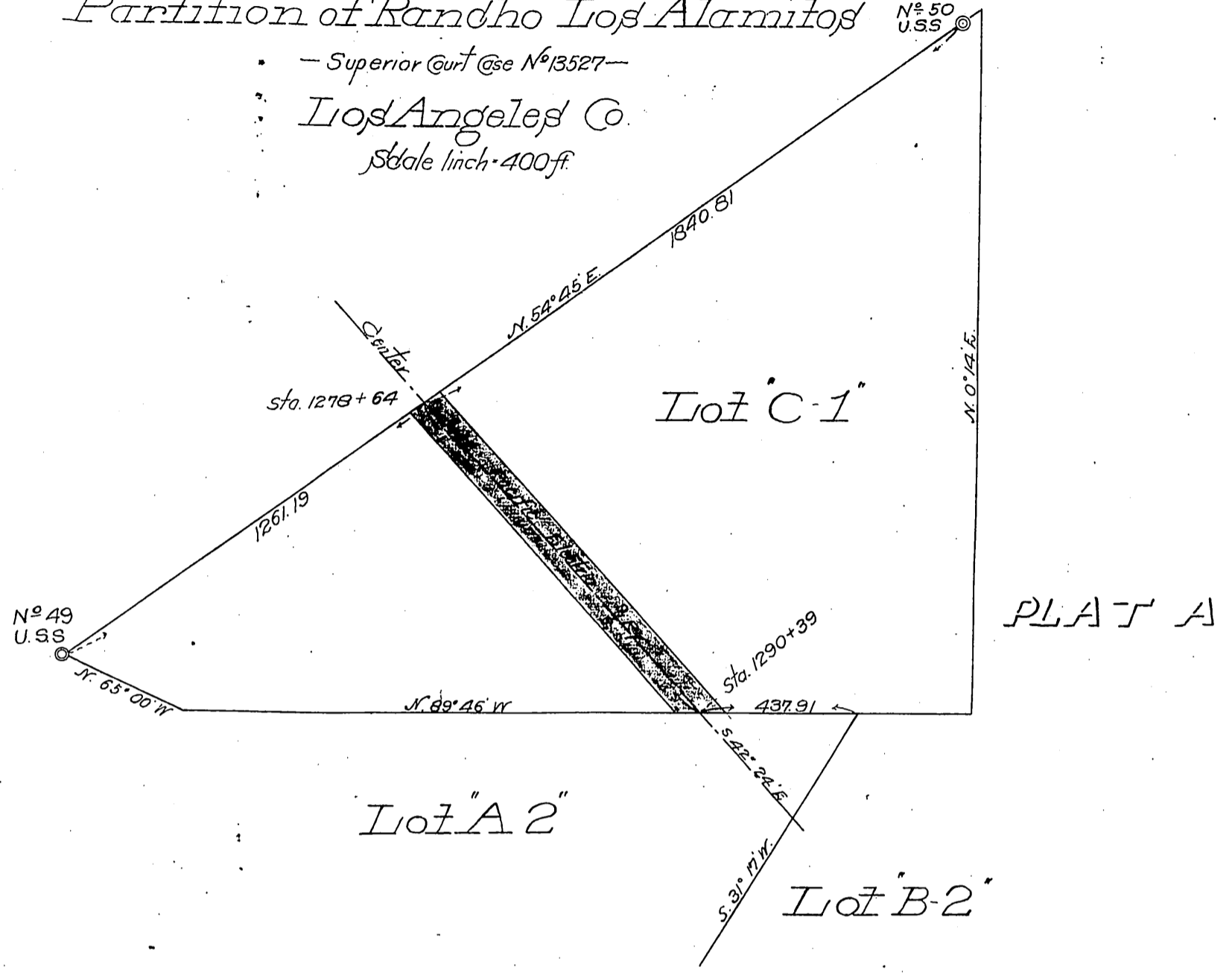
Isaias W. Hellman
to
Pacific Electric Railway Co.

"Lot C-1"

Partition of Rancho Los Alamitos

- Superior Court Case No 13527 -
Los Angeles Co.
Scale 1 inch = 400 ft.

No 50
U.S.S.

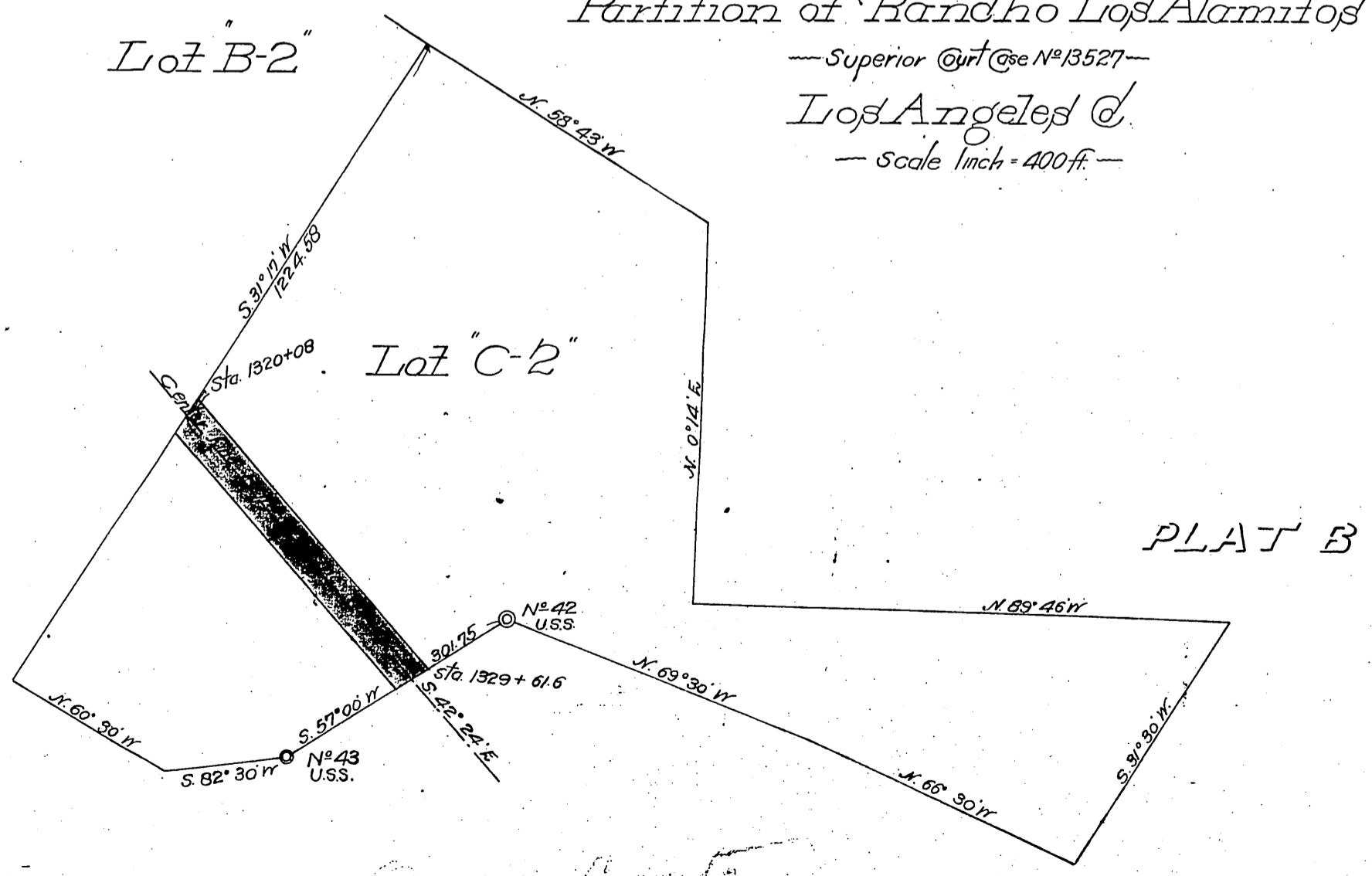


"Lot C-2"

Partition of Rancho Los Alamitos

- Superior Court Case No 13527 -
Los Angeles Co.
- scale 1 inch = 400 ft. -

Lot B-2



Orange County

Recorded Oct. 31, 1903

Comp
H. E. S.
1905