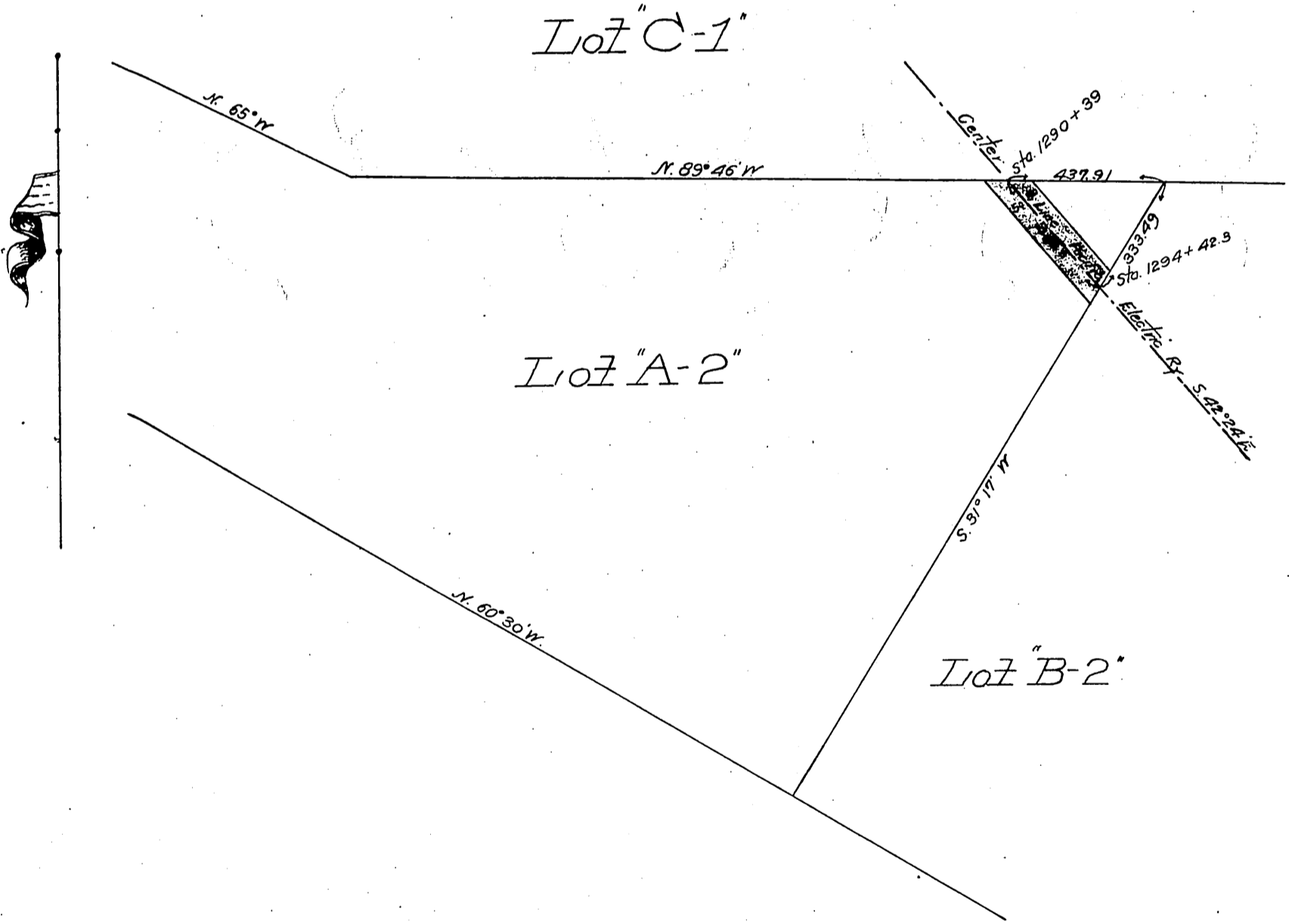


79

Palms Verdes Co
to
Pacific Electric Railway Co.

-Lot A-2-
Partition of Rancho Los Alamitos
- Sup. Court Case No 13527 -
Los Angeles Co.
Scale 1 inch = 400 ft.



Recorded Oct. 13-1903--

Comptroller
H. C. H.
D. 1922