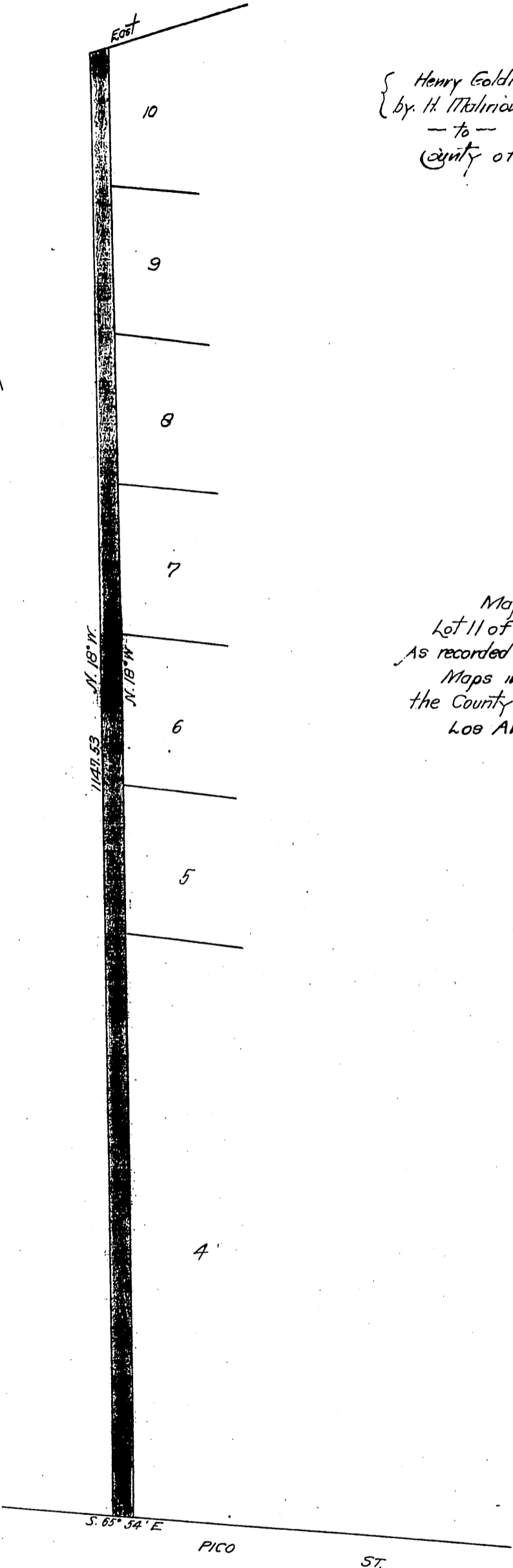
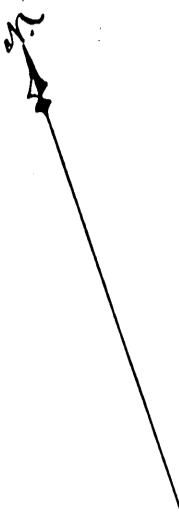


55



{ Henry Goldman  
 by H. Malinow (his attorney in fact)  
 -- to --  
 County of Los Angeles.

Map Showing  
 Lot 11 of Gertrude Terrace  
 As recorded in Blk. 5 Page 28 of  
 Maps in the Office of  
 the County Recorder of  
 Los Angeles Co.

— Recorded Feb. 18, 1904. —