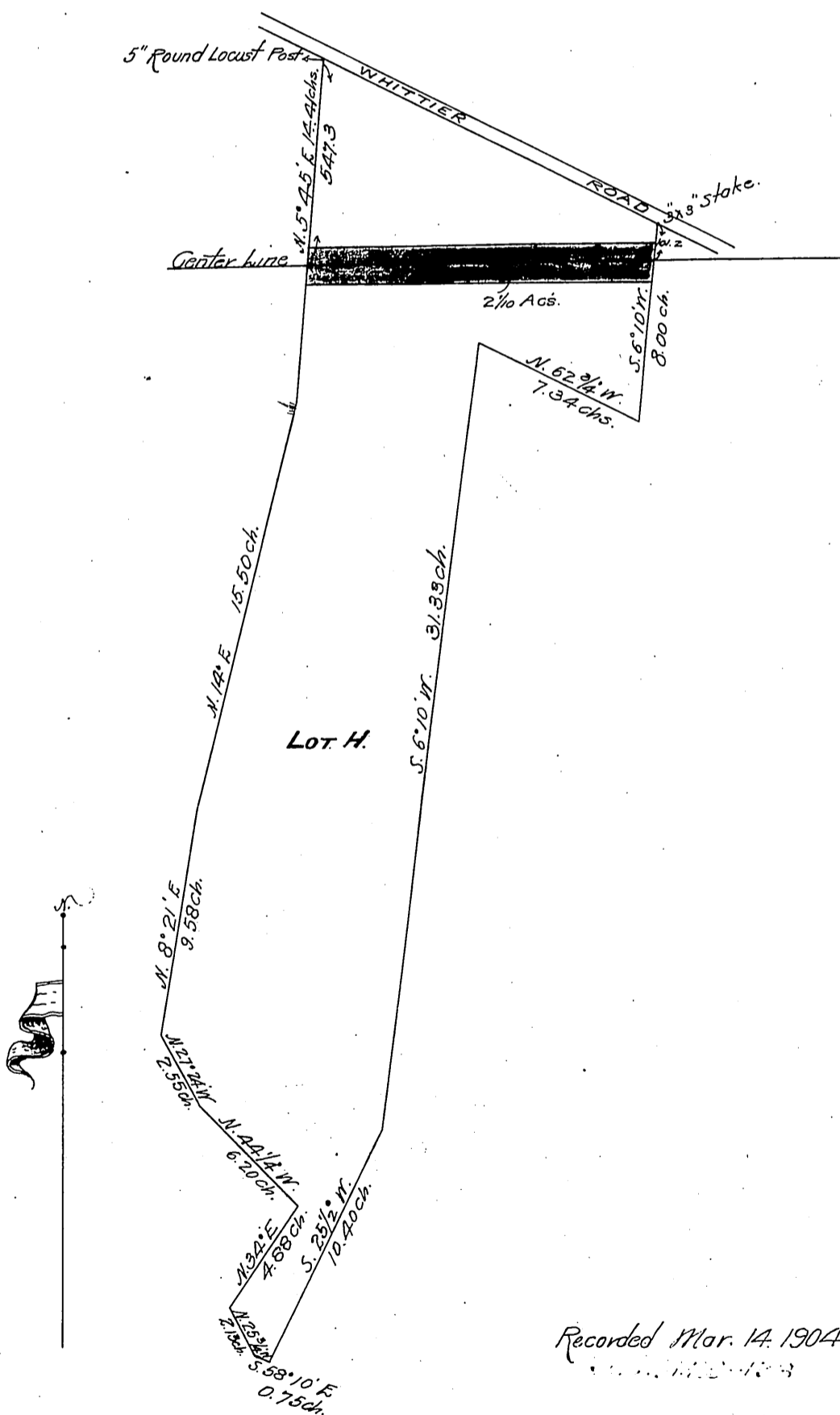


DM 1985-141

67

J. Ross Clark.  
Miriam H. Clark. } San Pedro, Los Angeles  
& Salt Lake Railroad Co.

Map of Lot H  
Coffman's Partition  
Being a part of  
Rancho Pasa De Bartolo  
Los Angeles County California  
Showing land acquired by the S.P.L.A. & S.L.R.R.Co.  
Scale 400' = 1"



Recorded Mar. 14, 1904.

141  
5/17  
2 5/8