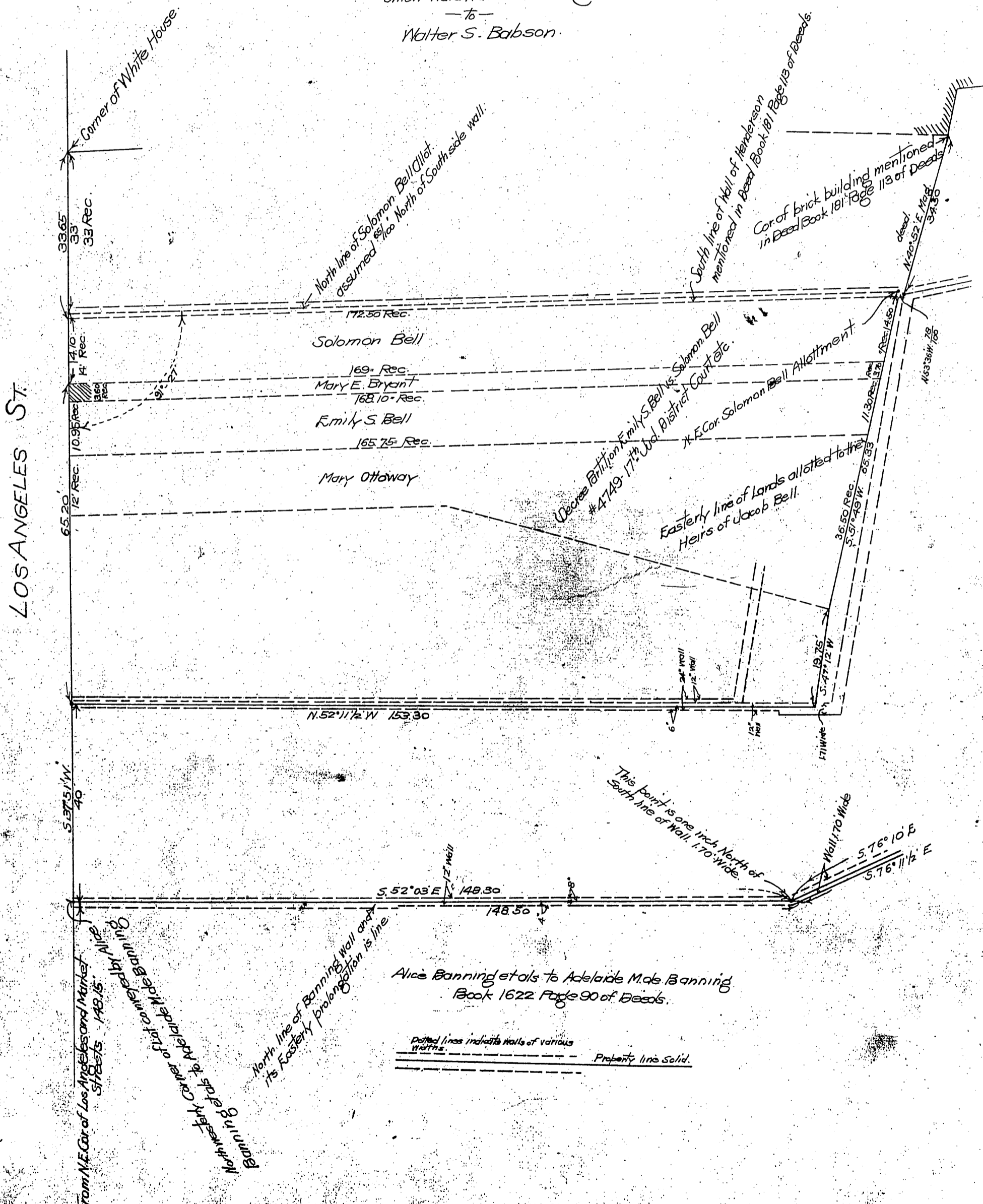


Div 10

A 19

Map
 of a Portion of Block
 bounded by Los Angeles Street, Wilmington
 Street, Commercial Street and Market Street.
 (Formerly Requena Street.
 In the City of Los Angeles County of Los Angeles California
 Surveyed in January 1907.
 by J. J. Roman, Surveyor.
 True Courses
 Scale 20 Feet to one inch.

Union Hardware & Metal Co.
 - to -
 Walter S. Babson.



Dec 13 1907

W. S. B. C. K.