

DM 3056-133

133

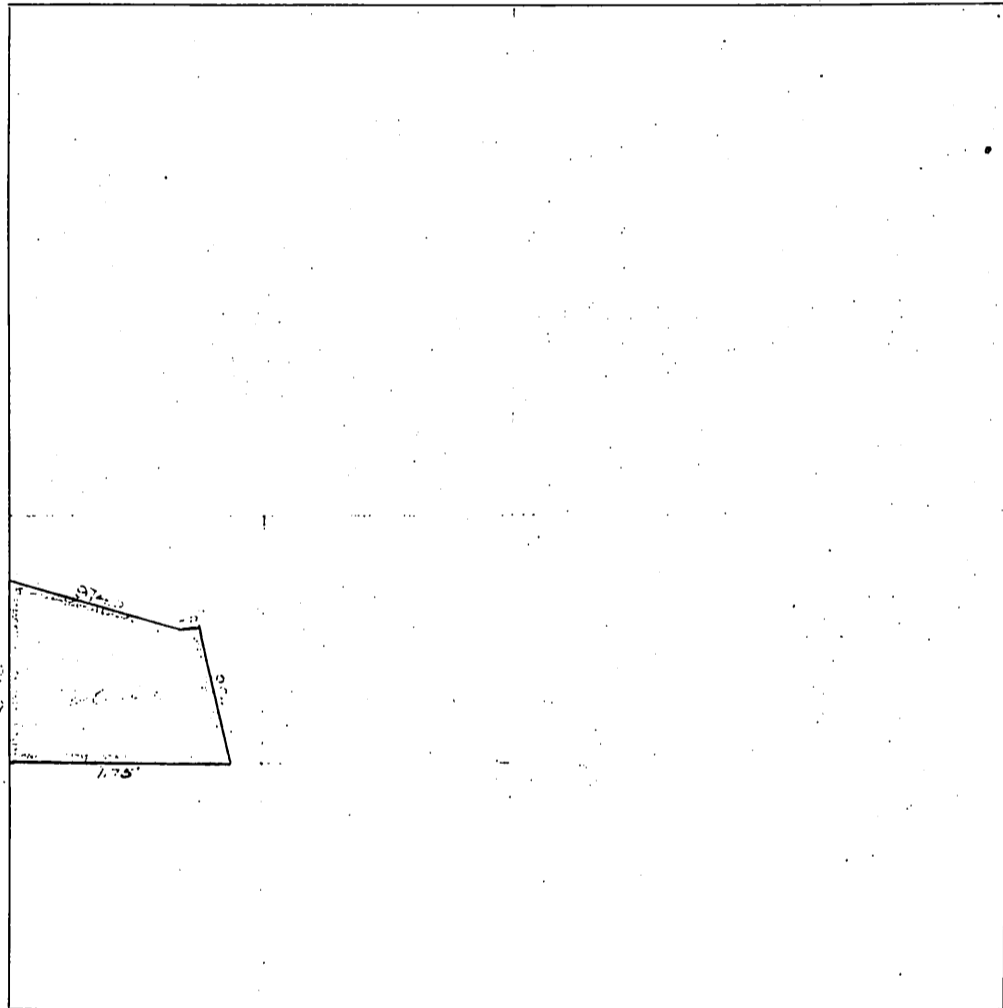
John P. Engelhardt
Rose Hesse Engelhardt
Quick claims to —
Amanda Kijwell. —

91

Plat of Section 20
Township 1 North, Range 9 West
S.B.M.

N

W



E

Scale = 1000' = 1"

S

See Map + 200

Recorded April 22, 1907.

Comp. 133
D: 3056