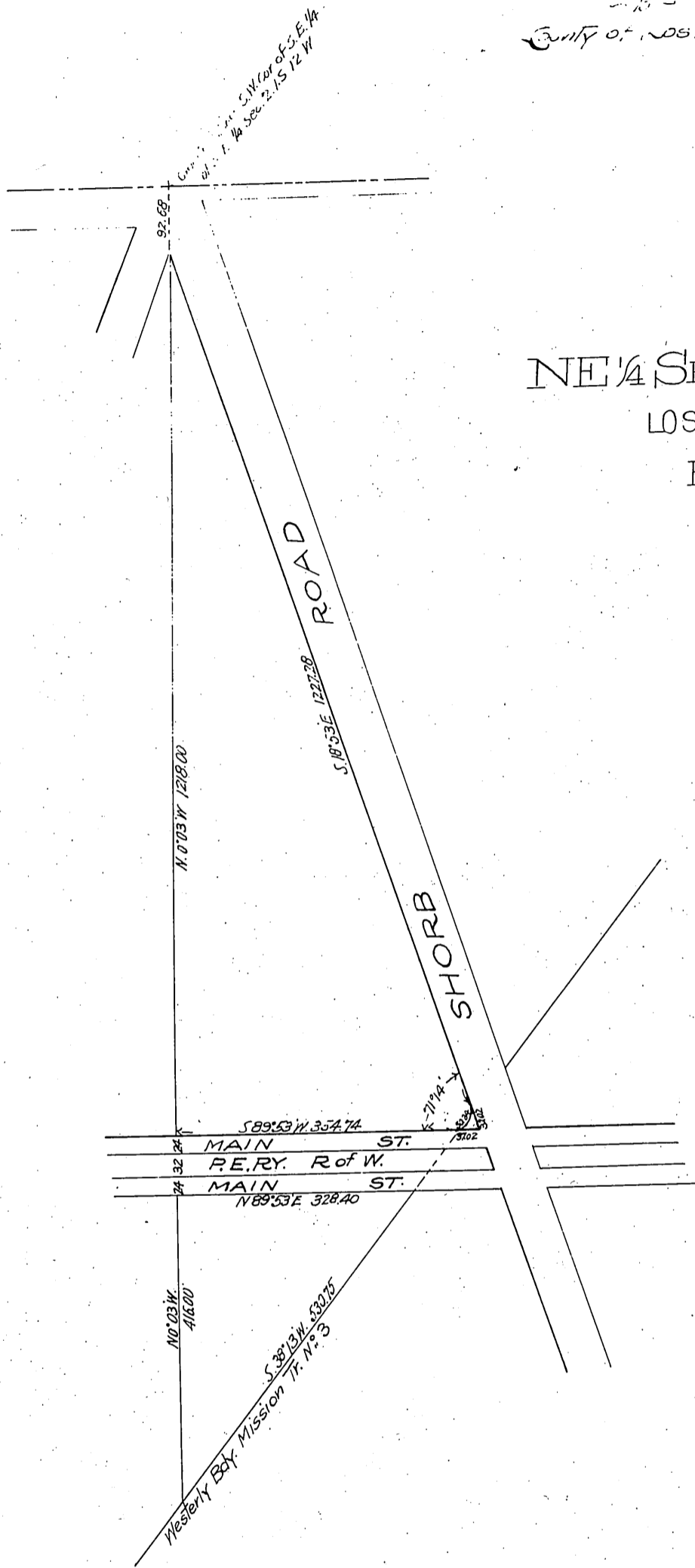


Wm. H. V. SWANSON
Huntington Surveying & Eng. Co.
County of Los Angeles.



PLAT
OF A PORTION OF
NE 1/4 SECTION 11 T1 S R12 W S B M
LOS ANGELES COUNTY CAL.
E.T. Wright Sur. March 1907
Scale 1 in = 200 ft.

Recorded May 17, 1907.

463

comp
D:3113