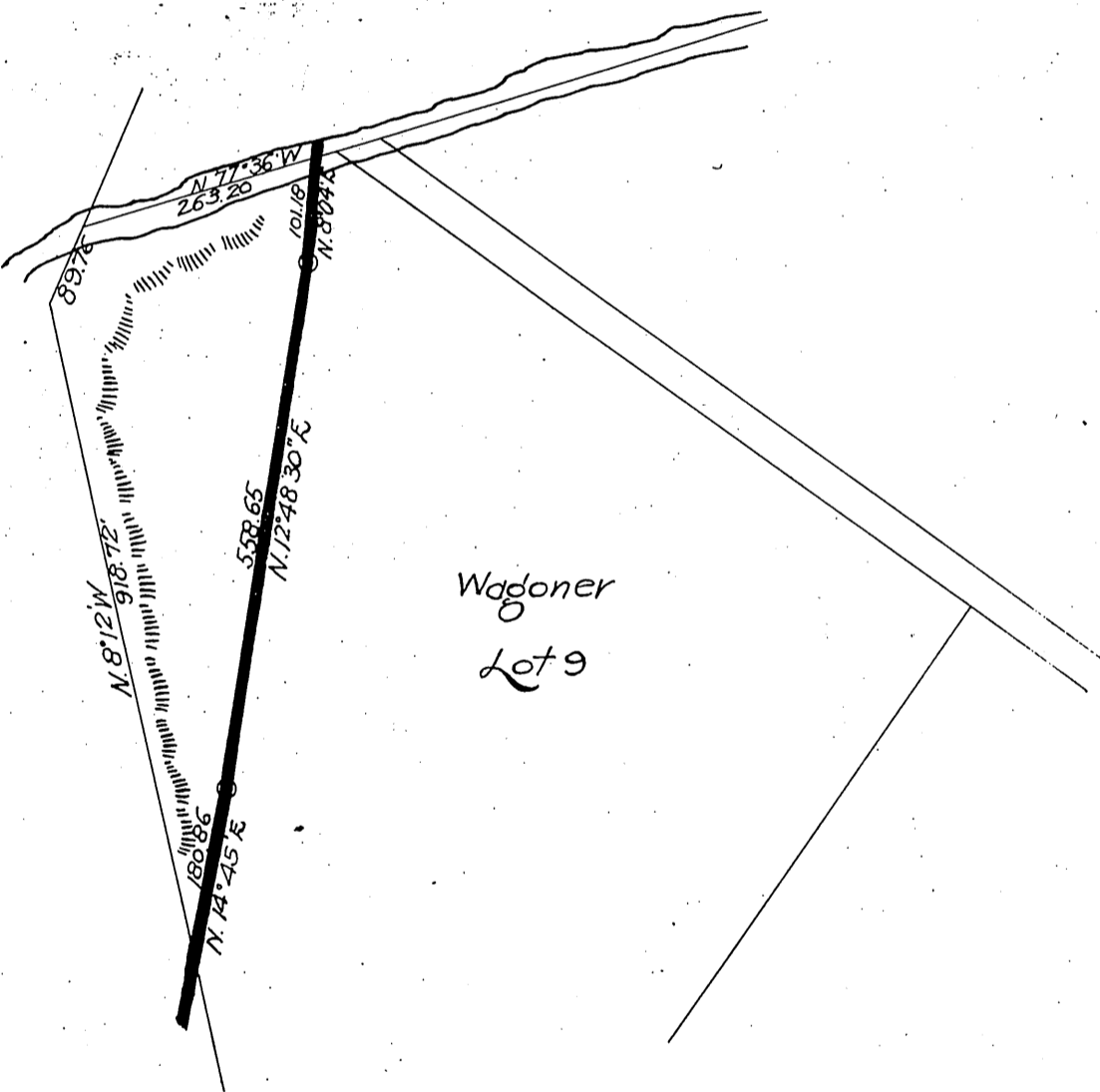


Joseph Wagoner
for a
Rt. of Way for a Steel Pipe Line
- To -
East Whittier Land & Water Co.

MAP
Showing part of Lot 9
Cohn's Partition of Lots 26, 27, 29 and 32 shown
on Map made by decree in Case N^o 20613.
Superior Court
As per map recorded in Book 60, Pages 384
Miscellaneous Records of County of
Los Angeles, State of California
July, '07 Scale 200'-1"



Recorded Jan. 31, 1908

Shirley A. Court