

51  
S.P.L.A. & S.L.R.R.  
Station  
County of Los Angeles.

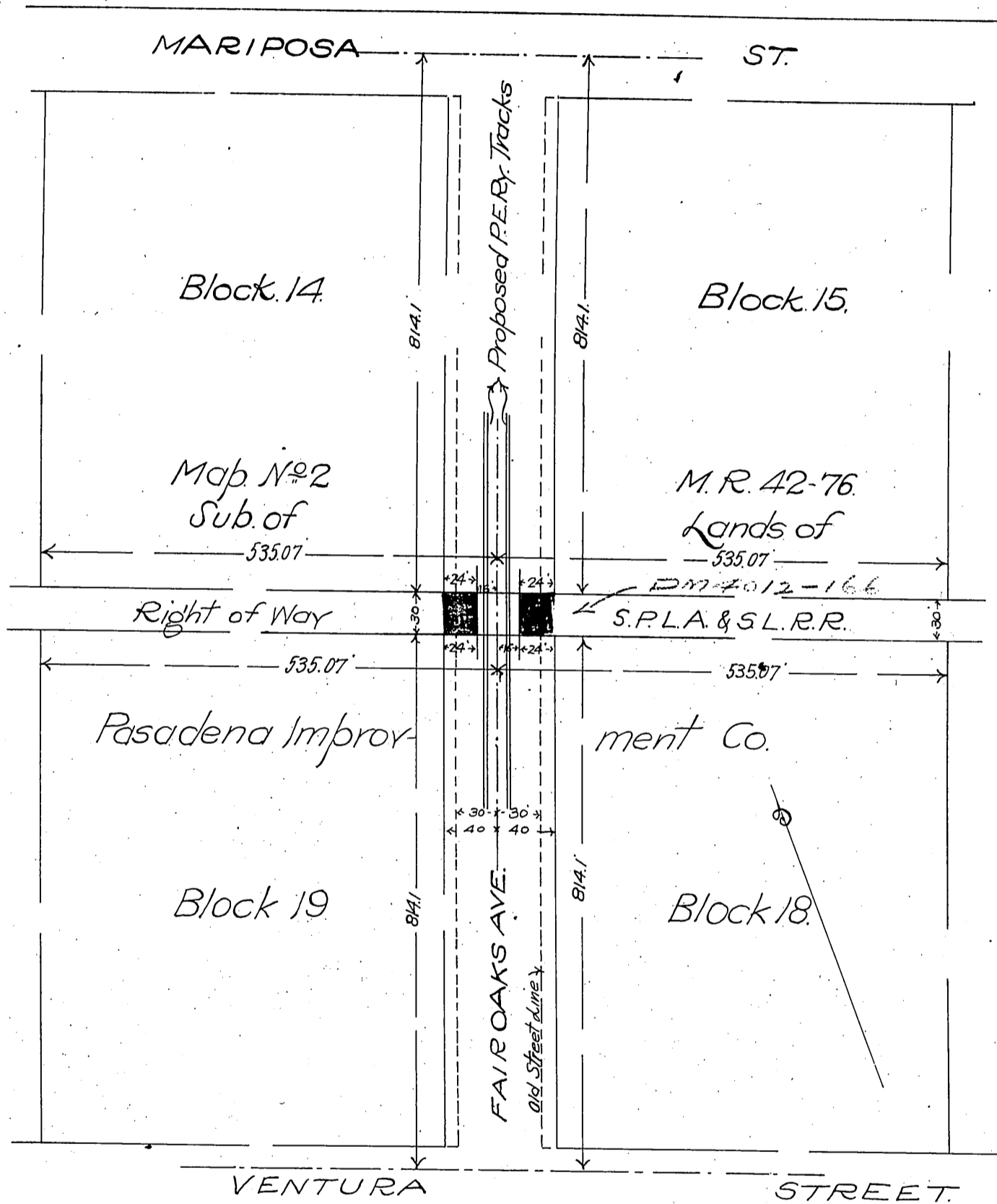


Exhibit "A"  
 S.P.L.A. & S.L.R.R. Los Angeles Division  
 Map to accompany Deed for County Road  
 Fair Oaks Avenue Altadena Cal.  
 Approved, Jan. 11, 1907.  
 Scale 1/4" = 100 ft.  
 E.M. Jessup.  
 E.M.O.F.W.

See D10-107

Recorded Jan. 25, 1908

400

507.7

copy  
D:32