

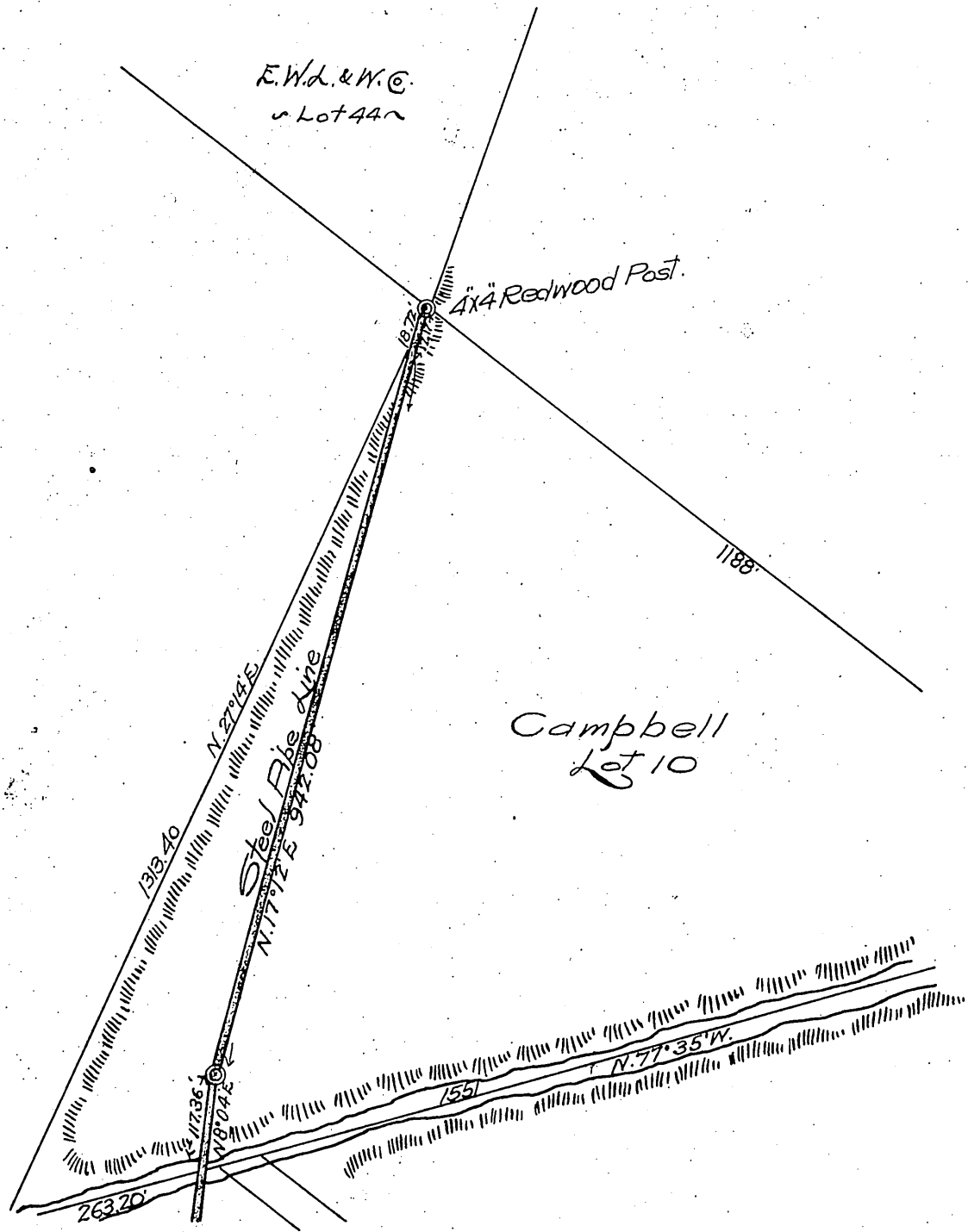
DM 3307-59

82

59  
2511

William C. Campbell.  
Grants to the East Whittier Land & Water Co.  
a Pt. of Way for a Steel Pipe Line.

Map.  
Showing part of Lot 10  
Cohn's Partition of Lots 26, 27, 29 and 32  
Shown on map made by decree in Case N<sup>o</sup> 20613  
Superior Court, as per map recorded in Book 60 Pages  
3 & 4 Miscellaneous Records of County of Los Angeles  
State of California  
July '07.  
Scale 200'-1"



Recorded Jan. 31, 1908.

SMT & A O N

D:3307