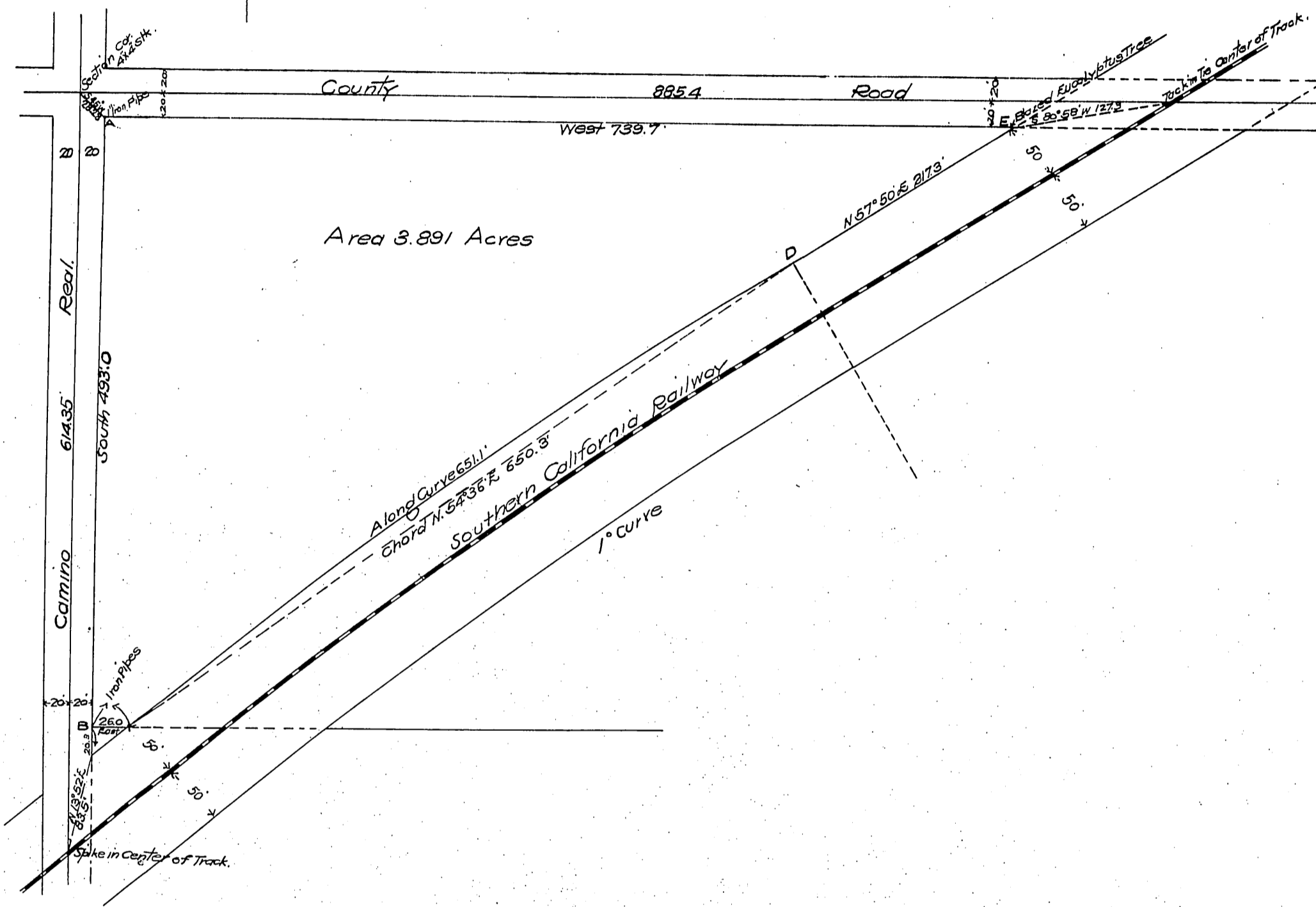


George B. Weidler  
Leis Grove Weidler  
To  
W. H. Jones & Mollie A. Jones.



Plan  
Portion of Lot 4, Redondo Land  
Co. sub. of Sec. 19, T. 3. S. R. 14. W. S. B. M.  
Surveyed for Geo. B. Weidler by S. V.  
Cortelyou June 10, 1908.  
Scale 1" = 100'

Recorded July 14-1908

S. V. Cortelyou

Handwritten signature or initials in the bottom right corner.