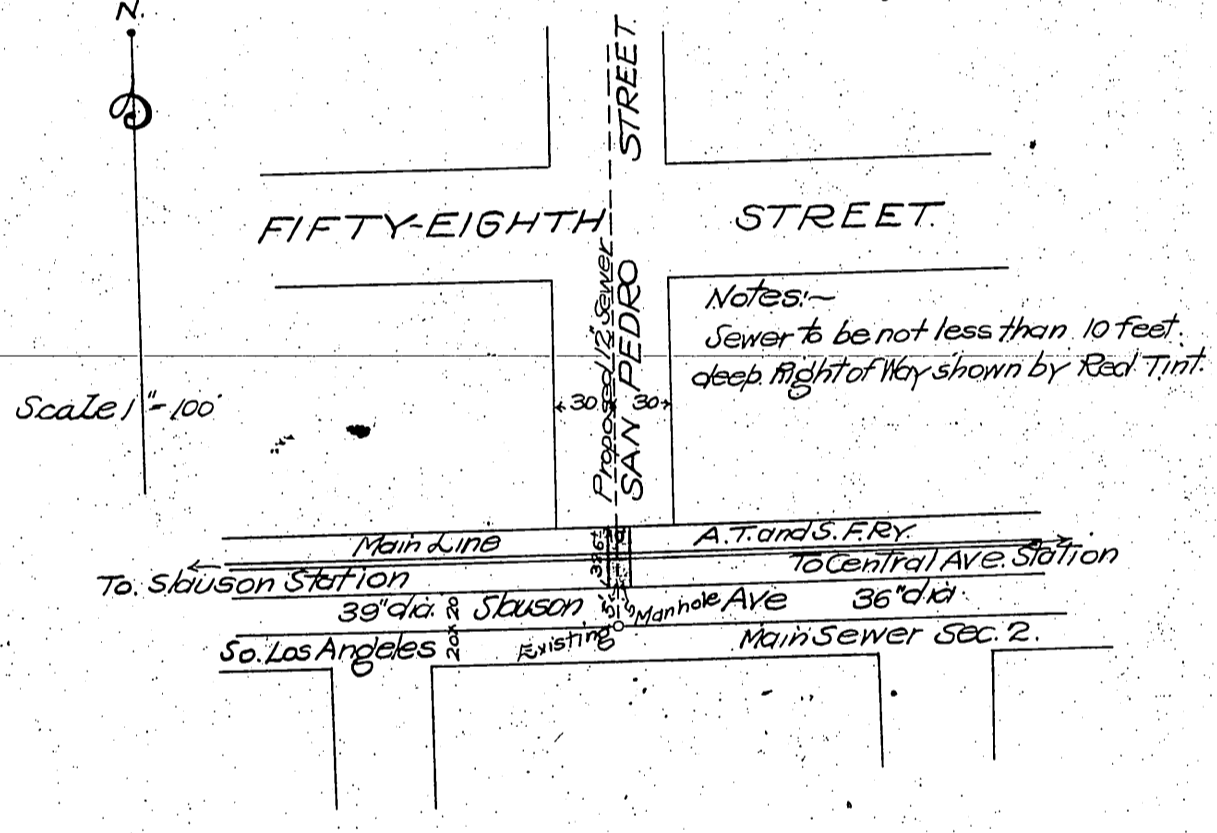


Atchison Topeka & Santa Fe Ry. Co.
-to-
City of Los Angeles.

EXHIBIT A

Attached to Contract Between
The Atchison Topeka & Santa Fe Ry. Co.
and
CITY OF LOS ANGELES
Los Angeles, Cal. March 17, 1908
Description Correct.
R. P. Ferriss
Office Engineer.



See D:11-134

Recorded June 23-1908

S/T OK