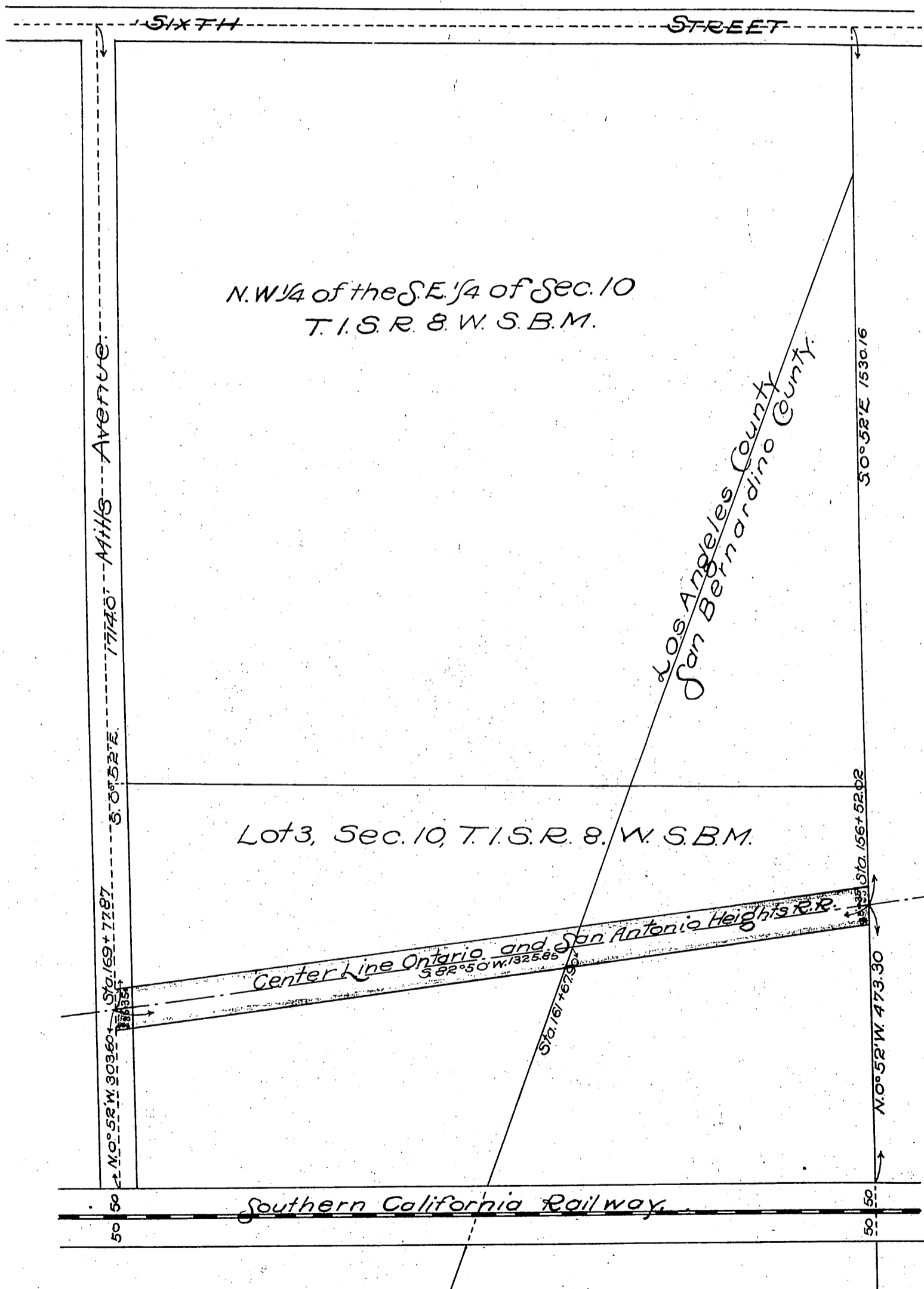


DM 3808-103

103

35

M. F. Palmer
to
Wm. G. Kerckhoff



N. W. 1/4 of the S. E. 1/4 of Sec. 10
T. 1. S. R. 8. W. S. B. M.

Los Angeles County
San Bernardino County

Lot 3, Sec. 10, T. 1. S. R. 8. W. S. B. M.

Center Line Ontario and San Antonio Heights R.R.
S 82° 50' W 1325.85

Southern California Railway

Scale, 1" = 200'

Recorded July 3, 1909.

A109

ht. C. K.

Comp. E.
0-3808