

DM 3824-250

250

45

L. Dora C. Call and Joseph H. Call.
TO
Hueneme, Malibu and Port Los Angeles Ry.

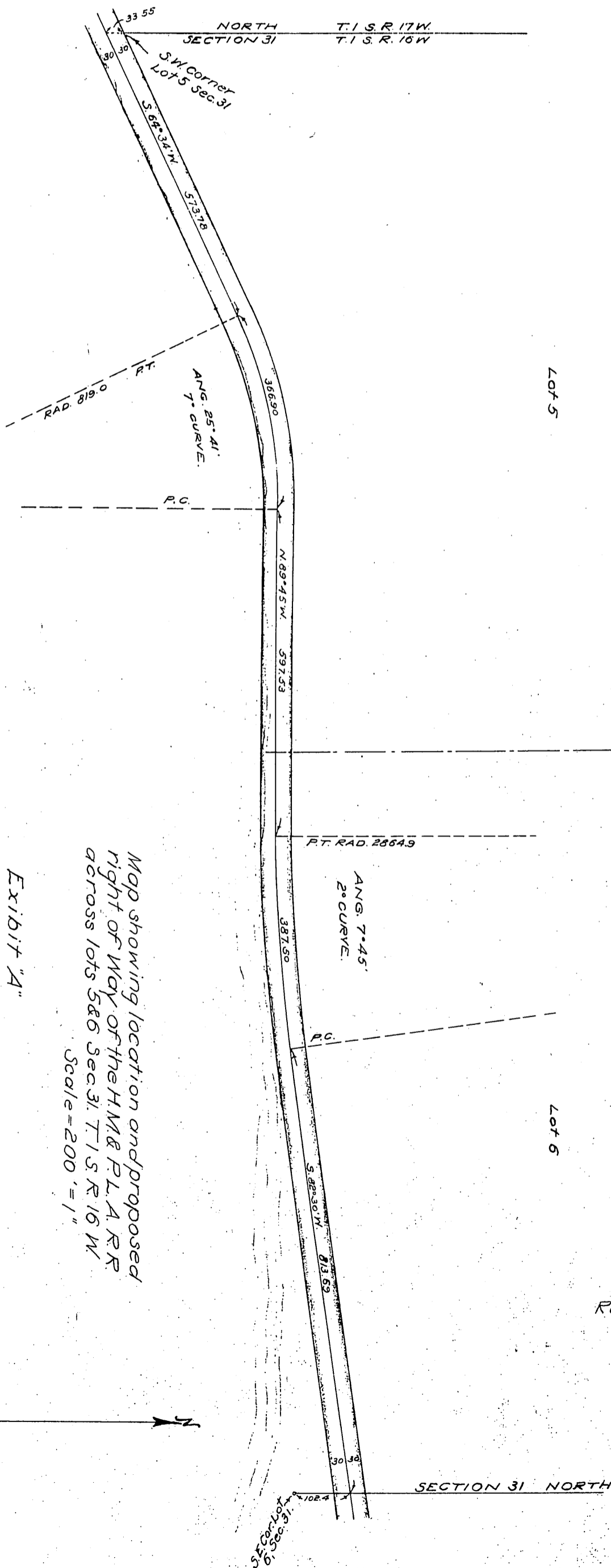


Exhibit "A"

Map showing location and proposed
right of way of the H.M. & P.L.A. R.R.
across lots 5 & 6 Sec. 31, T.1 S. R. 16 W.
Scale = 200' = 1"

Recorded Aug. 26, 1909

SECTION 31 NORTH

S.E. Corner
of Lot
6, Sec. 31

See Map 3824-250

D. 3824