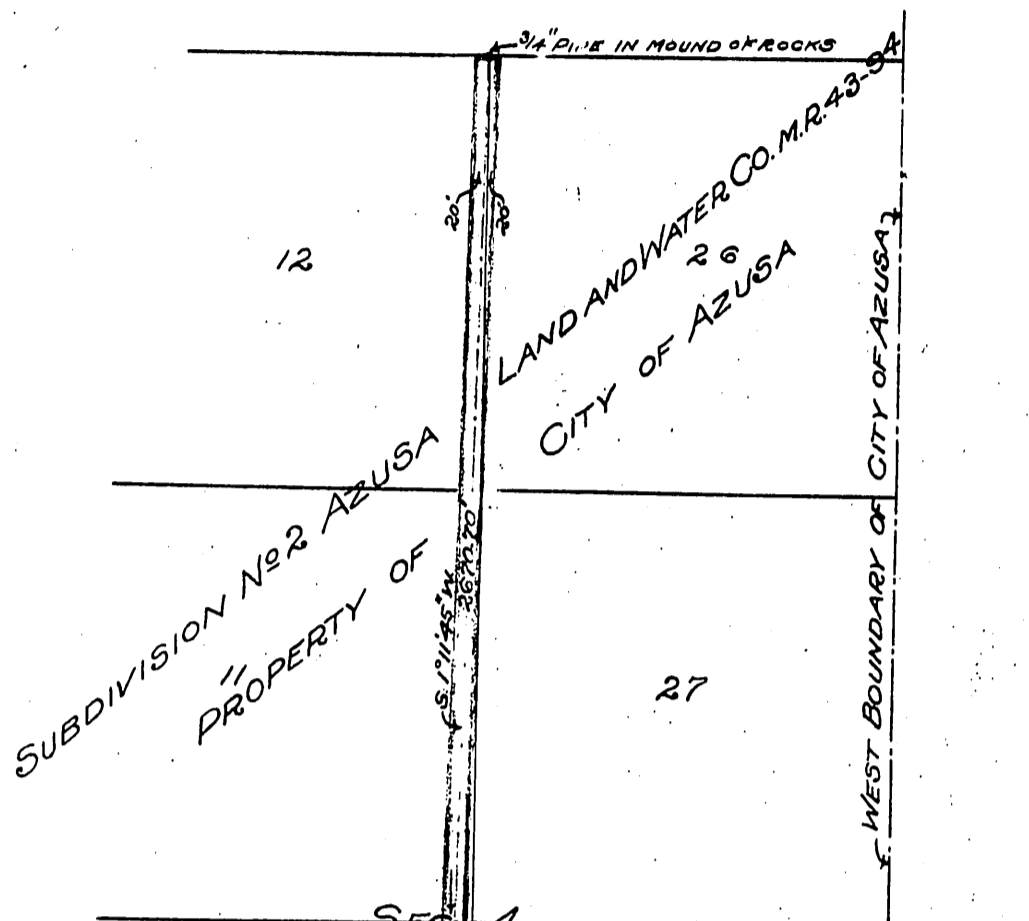


48



SEC 4

GRANITE BOULDER

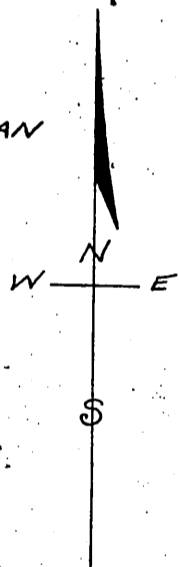
G.T. Brown Co. Fred C. Devendorf.  
 G. Dittberner Wm Ritz  
 G.W. Moran A. Thompson.  
 Gertrude W. Earle A.P. Pusich  
 (City of Azusa (by Y.M. Greever, Pres.  
 Board of Trustees  
 George T. Brown Co.  
 To  
 County of Los Angeles

A. THOMPSON

G.W. MORAN

N.B. YOUNG

GERTRUDE W. EARLE



T. I. S. R. 10 W.

SET 1/4\"/>

CENTER ST.

A. P. PUSICH

PUENTE AND AZUSA BRIDGE

SEC 9