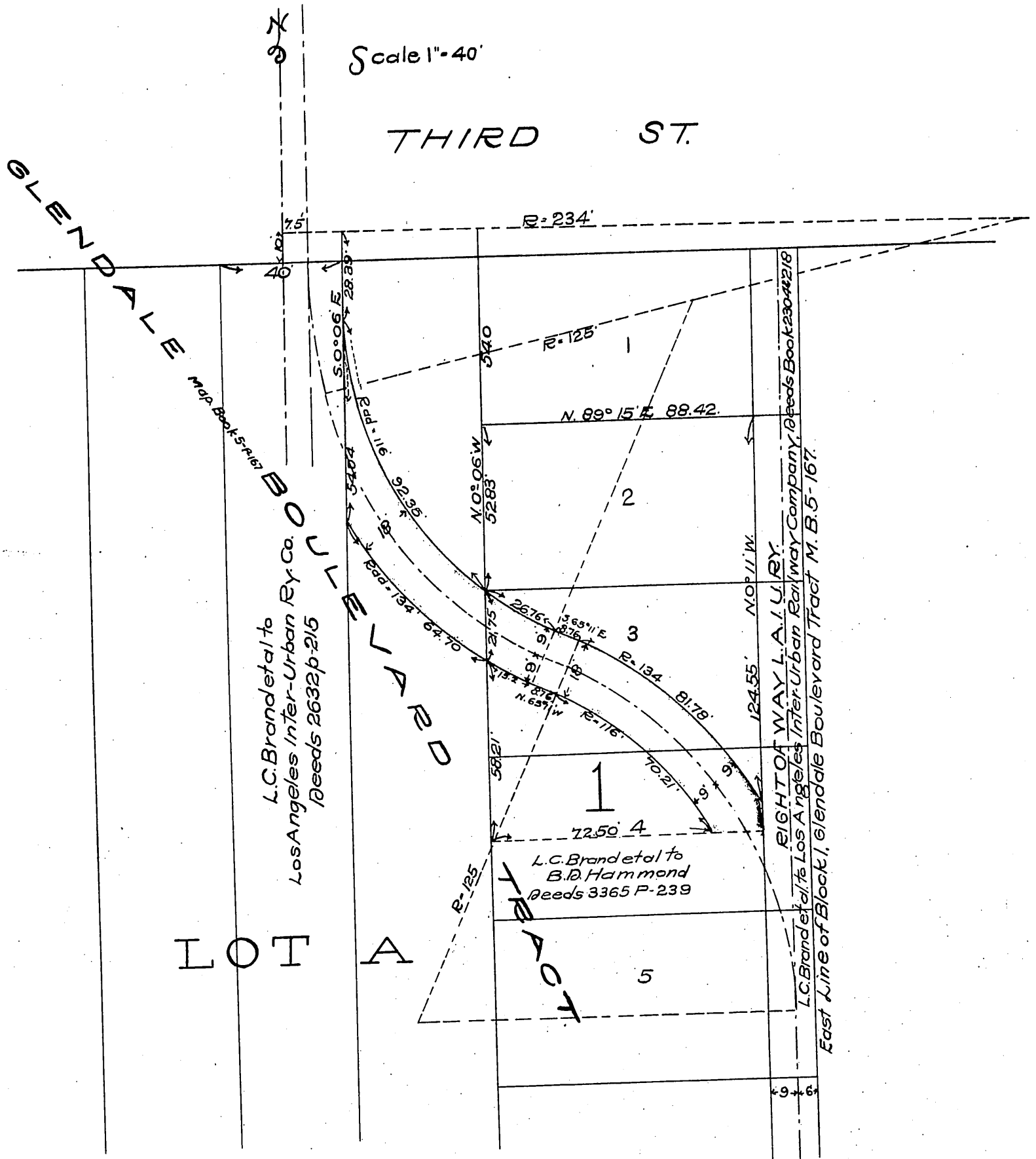


DM 3847-306

54

{ L.C. Brand
Mary Louise Brand
and
Huntington Land & Imp. Co.
to
L.A. Inter-Urban Ry Co.



Scale 1" = 40'

THIRD ST.

GLENDALE BOULEVARD

LOT A

TRACT

L.C. Brand et al to
Los Angeles Inter-Urban Ry Co.
Deeds 2632 p-215

L.C. Brand et al to
B.D. Hammond
Deeds 3365 P-239

EIGHT OF WAY L.A. I. U. RY.
L.C. Brand et al to Los Angeles Inter-Urban Railway Company Deeds Book 230-4218
East Line of Block 1, Glendale Boulevard Tract M. B. 5-167.

Recorded Oct. 5, 1909.

Sht O. A.

Dec 11 1909

D:3847