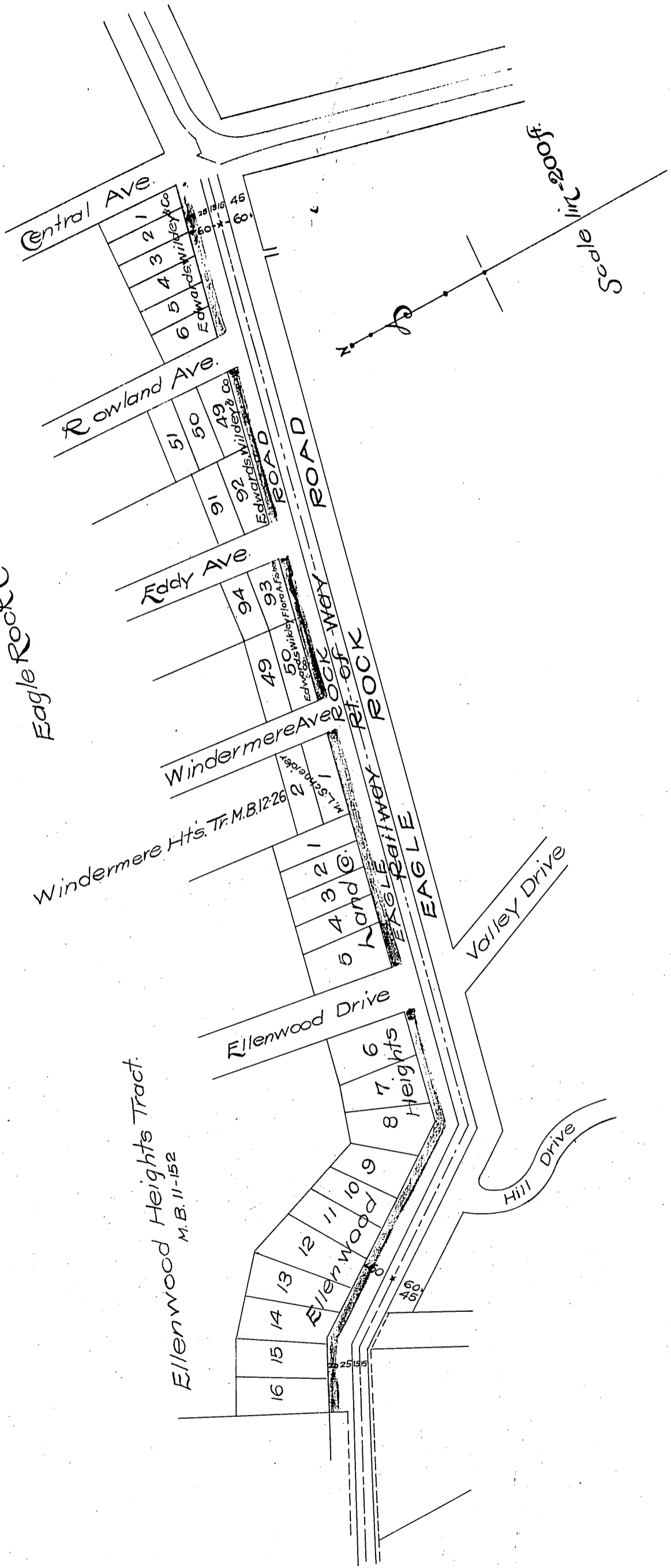


Edwards & Wildey Co.  
{ Jane M. Eddy (As Atty. in fact for Flora A. Fisher)  
Ellenwood Hts Land Co } To L.A. County.  
M. L. Schneider

Eagle Rock Central Tract M.B. 12-54



Ellenwood Heights Tract  
M.B. 11-152

Windermere Hts. Tr. M.B. 12-26

See D:16-103

Recorded Nov 8, 1909