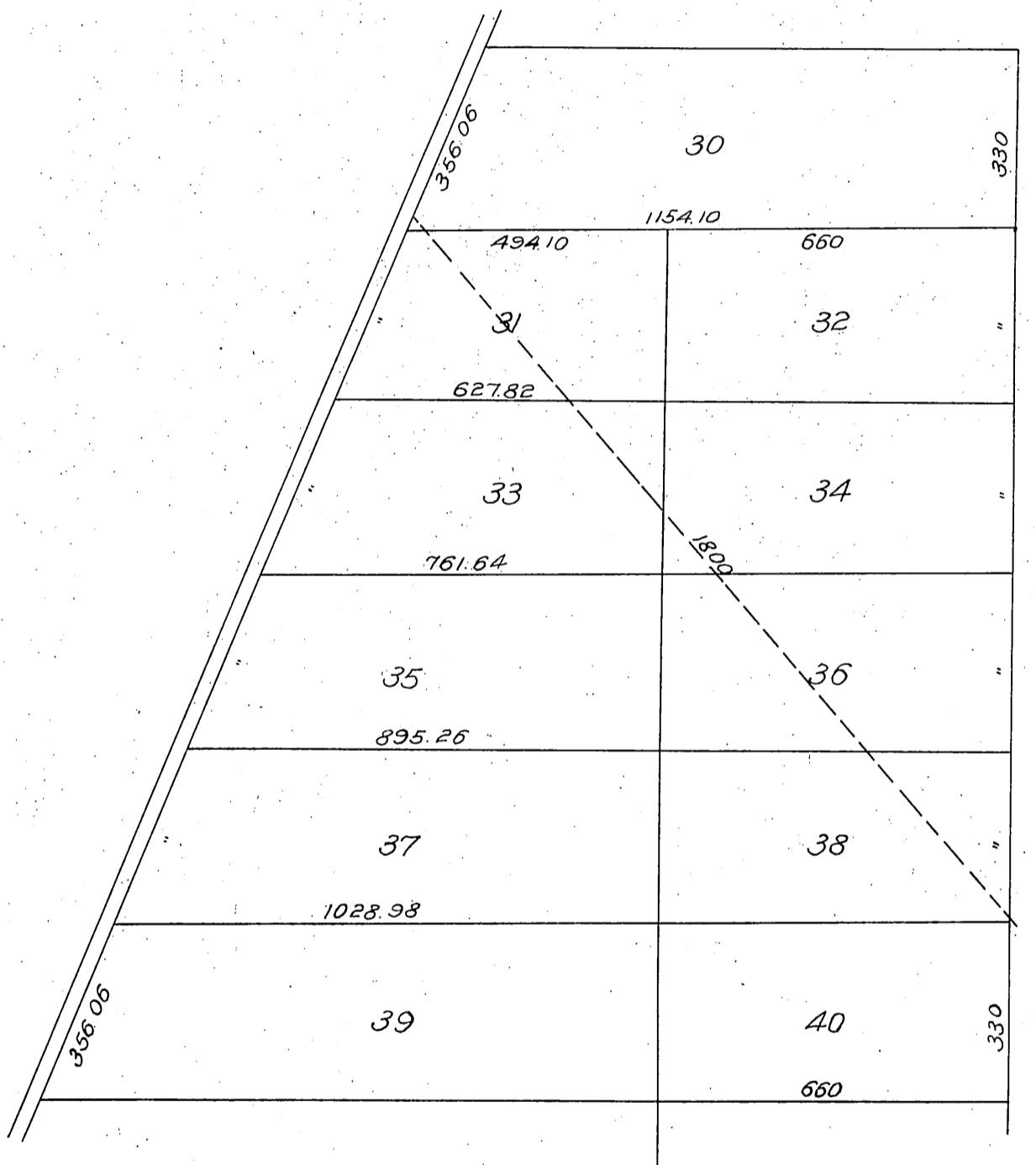


Davison, Smith & Mizener, per D. A. Mizener
a member of said firm.

to
City of Whittier.

Plat
Of a portion of Block 2, of the Orchard Dale Tract,
being a part of the Coronel and Sanchez Tract
Allotted to Mrs. Mariana W. Smith M.R. 60-73
Scale 1" = 300'



Recorded Jan. 4, 1910