

OFFICE OF THE COUNTY SURVEYOR OF THE COUNTY OF LOS ANGELES

HIGHWAY DEDICATION MAP

LEGEND

COUNTY SURVEYOR'S MAP NO. B-190-1 MAP NO. INDEX MAP NO. 44 (A.B. 2) SEARCH MAP NO. FOOTHILL BLVD. (17)

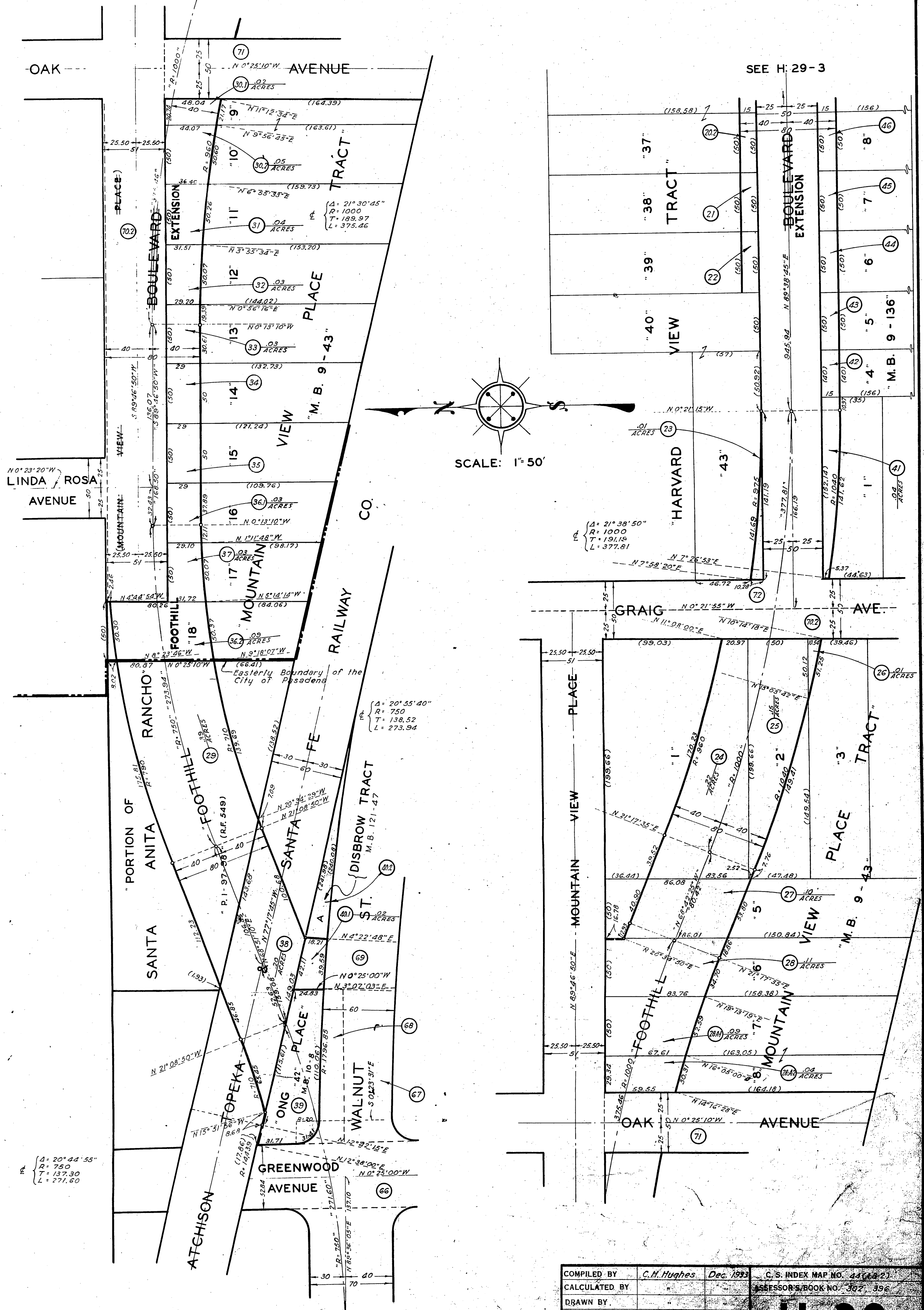
FIELD BOOK NO. 336, 338, 308 FIELD BOOK NO.

WORDS AND FIGURES SHOWN QUOTED ON MAP ARE AS DESCRIBED IN THE CONVEYANCE. FIGURES SHOWN IN PARENTHESES ON MAP ARE TAKEN FROM PREVIOUS RECORDS OR ARE CALCULATED THEREFROM. LAND INCLUDED IN CONVEYANCE SHOWN IN COLORED TINT. DEDICATION STATUS SCALE INDICATES RELATIVE IMPORTANCE OF GRANTEE'S INTERESTS IN EACH PARCEL.

POSTING CHECKED table with columns for H. D. MAP BOOK, SEARCH MAP, TRACTS, C.S.M., D., ASSESSOR'S BOOK, C. S. INDEX MAP.

Main table with columns: LINE NO., PARCEL NO., OFFICIAL RECORDS (CERTIFICATE NO., DOC. NO., BOOK, PAGE), DATE RECORDED, 'D' BOOK, DATE OF CONVEYANCE, NATURE OF CONVEYANCE, PURPOSE, NAME, CONSIDERATION, CONDITIONS, GRANTEE, GRANTORS, DEDICATION STATUS SCALE (1-10), and various tracking columns.

OFFICE OF THE
 COUNTY SURVEYOR
 OF THE COUNTY OF LOS ANGELES
 HIGHWAY DEDICATION MAP



LINDA ROSA AVENUE

SEE H: 29-3

SCALE: 1" = 50'

$\Delta = 20^{\circ}44'55''$
 $R = 750$
 $T = 137.30$
 $L = 271.60$

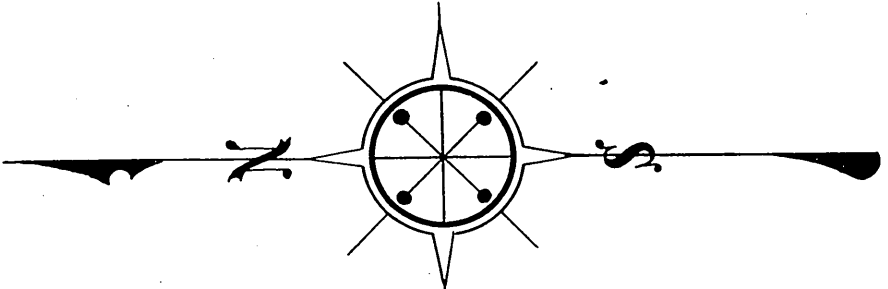
$\Delta = 20^{\circ}55'40''$
 $R = 750$
 $T = 138.52$
 $L = 273.94$

$\Delta = 21^{\circ}38'50''$
 $R = 1000$
 $T = 191.18$
 $L = 377.81$

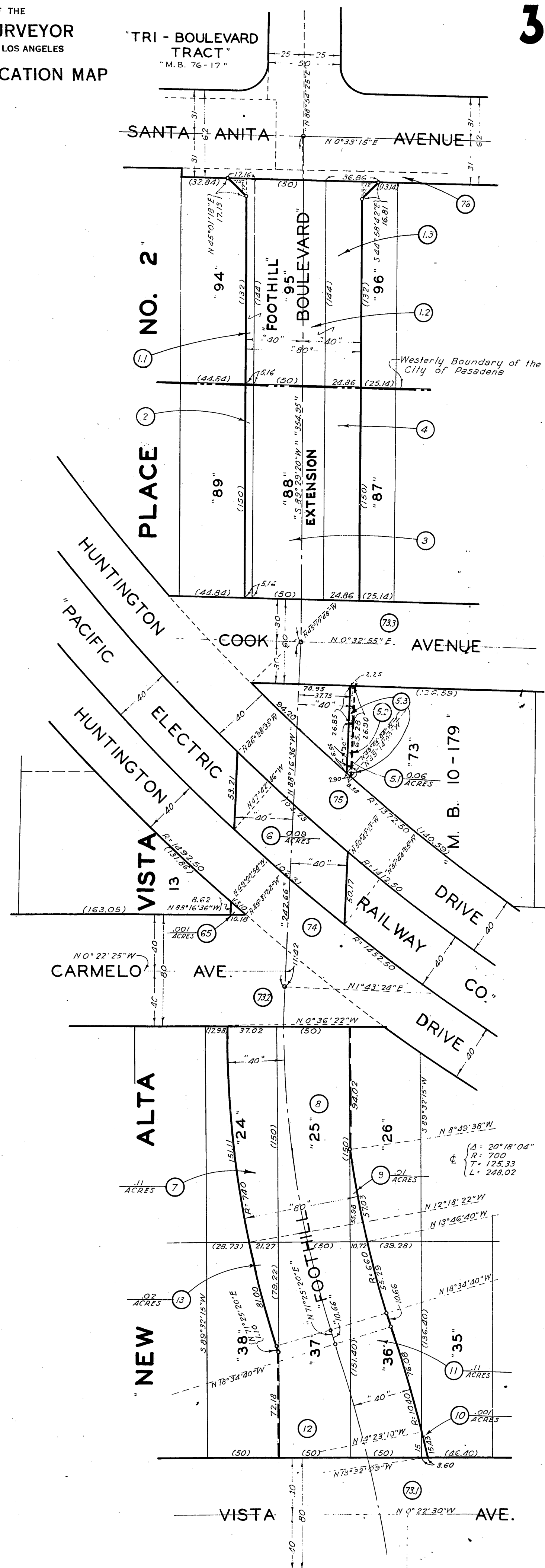
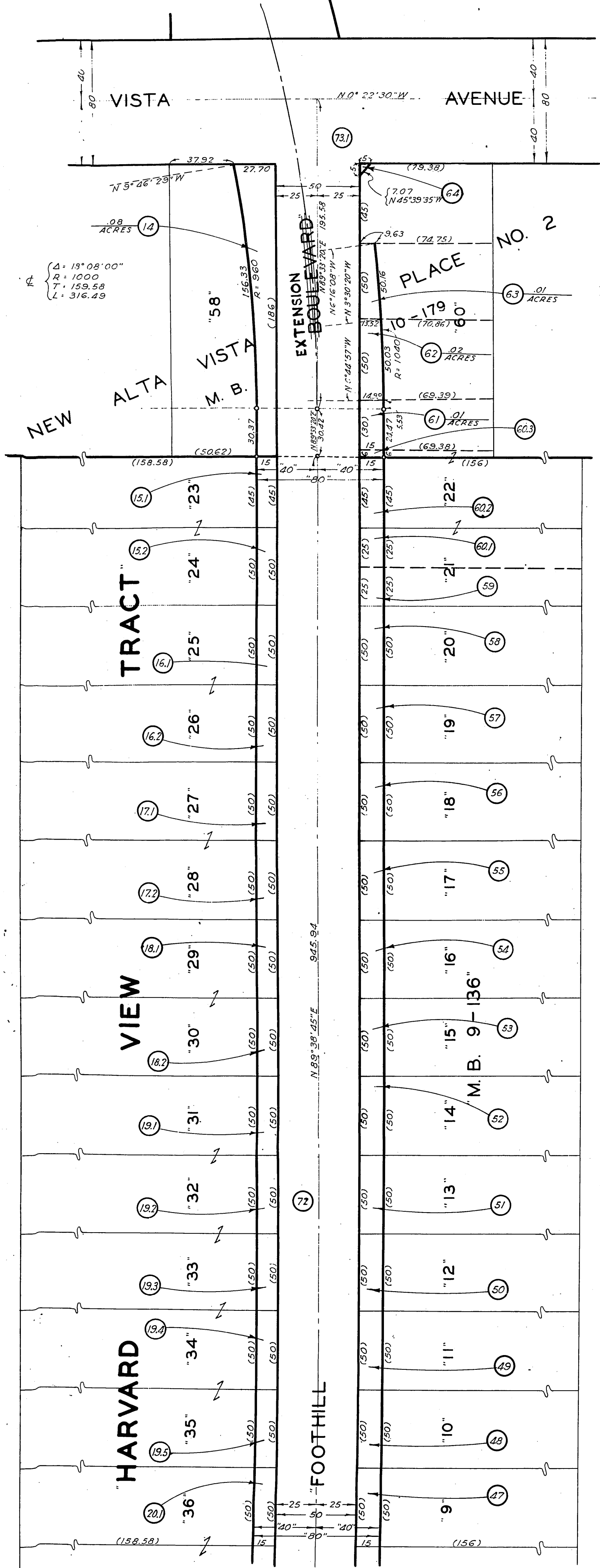
COMPILED BY	C.H. Hughes	Dec. 1933	C. S. INDEX MAP NO. 44 (122)
CALCULATED BY	"	"	ASSESSOR'S BOOK NO. 367-396
DRAWN BY	"	"	"
TRACED BY	"	"	"
CHECKED BY	Gard & Lunt	Feb. 1934	"

H: 29

OFFICE OF THE
COUNTY SURVEYOR
OF THE COUNTY OF LOS ANGELES
HIGHWAY DEDICATION MAP



SCALE: 1" = 50'



SEE H:29-2

COMPILED BY	C.M. Hughes	Dec. 1933	C. S. INDEX MAP NO. 44 (A, B 2)
CALCULATED BY	"	"	ASSESSOR'S BOOK NO. 302, 396
DRAWN BY	"	"	
TRACED BY	"	"	
CHECKED BY	Cord & Lunt	Feb. 1934	

H: 29

H 29-3