

OFFICE OF THE COUNTY SURVEYOR OF THE COUNTY OF LOS ANGELES HIGHWAY DEDICATION MAP

LEGEND

COUNTY SURVEYOR'S MAP NO. B 150 CLERK'S FILED MAP NO. 1891 (S.C.C. 324103) INDEX MAP NO. 22(B2) SEARCH MAP NO. SUNSET BLVD 13

FIELD BOOK NO. 311 FIELD BOOK NO. PUBLIC TITLE COMPLETE FEE SUBORDINATED (title incomplete)

WORDS AND FIGURES SHOWN QUOTED ON MAP ARE AS DESCRIBED IN CONVEYANCE. FIGURES SHOWN IN PARENTHESES ON MAP ARE FROM PREVIOUS RECORDS OR ARE CALCULATED THEREFROM. LAND IN CONVEYANCE SHOWN IN COLORED TINT. DEDICATION STATUS SCALE INDICATES RELATIVE IMPORTANCE OF GRANTEE'S INTERESTS

Table with columns for DEDICATION STATUS SCALE and POSTING CHECKED, including sub-columns for various legal terms like TAX TITLE, PARTICULAR STATES, TRUST DEEDS, etc.

Main table with columns: LINE NO., PARCEL NO., OFFICIAL RECORDS, DATE RECORDED, 'D' BOOK PAGE, DATE OF CONVEYANCE, NATURE OF CONVEYANCE, PURPOSE, NAME, CONSIDERATION, CONDITIONS, GRANTEE, GRANTORS, and various status indicators.

(E: 21 - 96)

SUNSET HILLS RD.
N 0° 16' 15" E

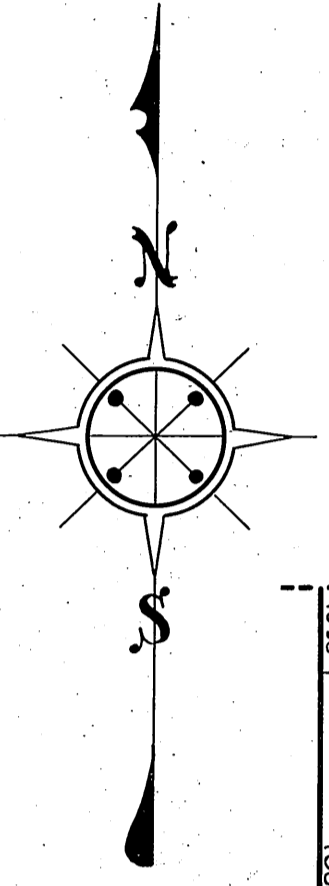
CORY AVE.
N 0° 16' 50" E

DOHENY RD. N 89° 43' 45" W
SUNSET BLVD. N 89° 43' 45" W

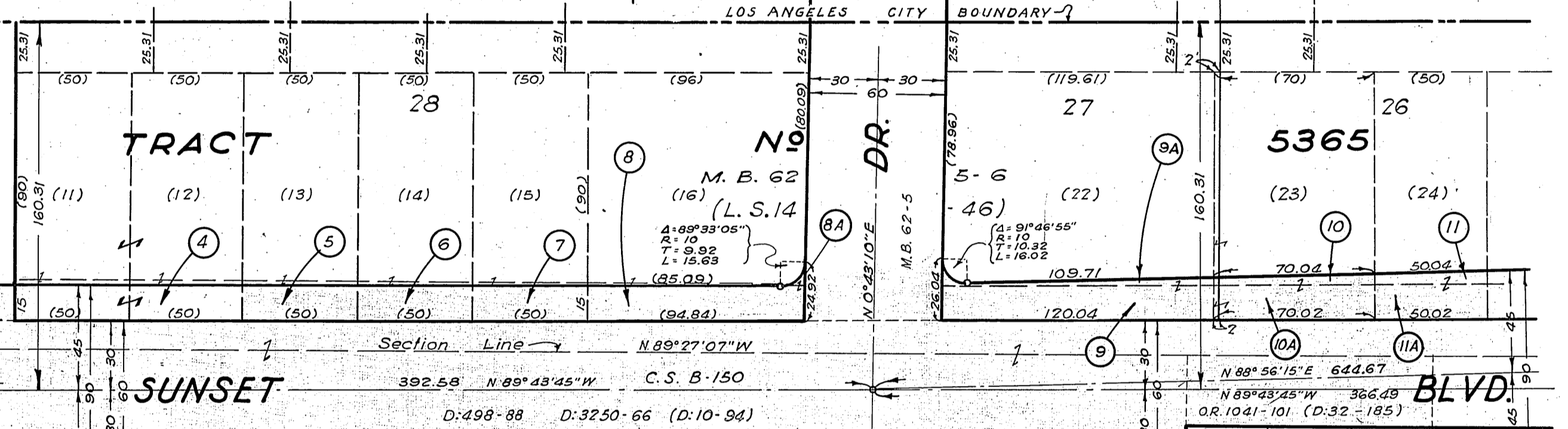
SUNSET BLVD.
D. 5030 - 197 (D. 17-222)

CORY AVE.
S 0° 47' 40" W

CAROL DR.
S 0° 43' 25" W

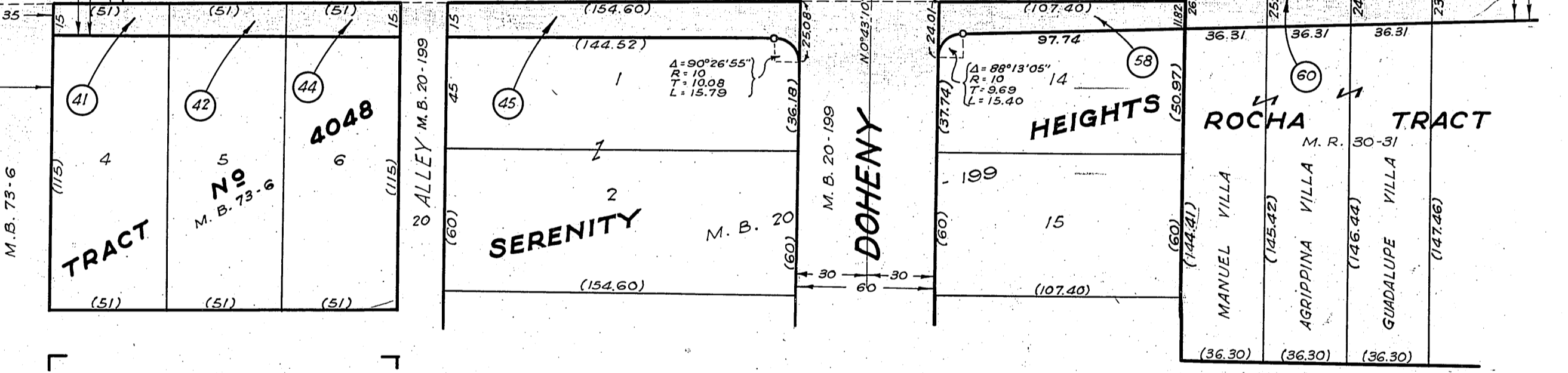


SCALE: 1" = 50'



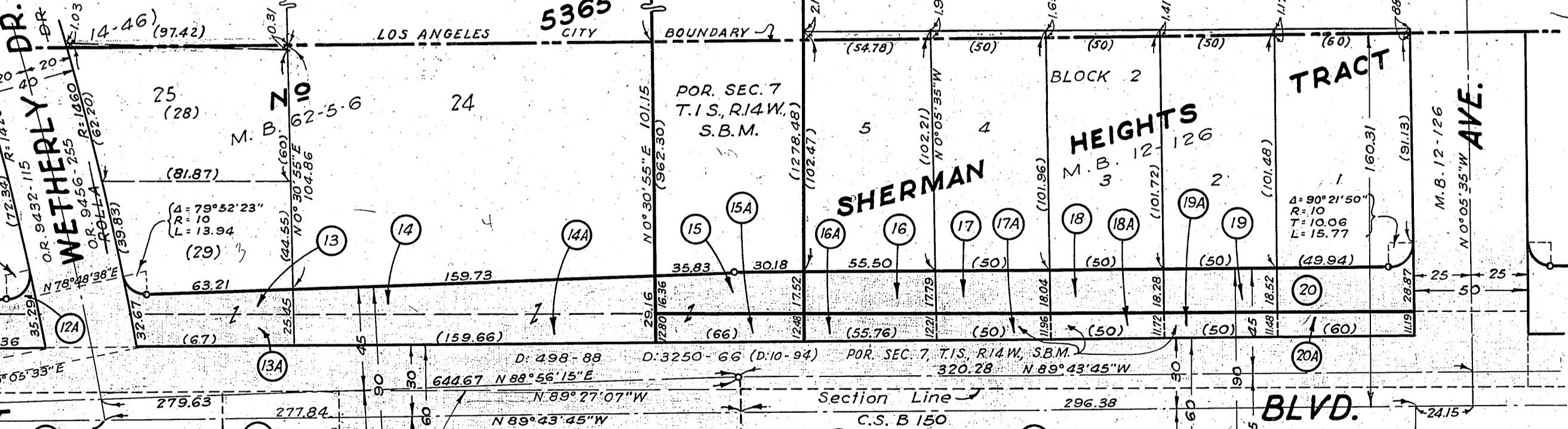
CAROL DR.
S 0° 43' 25" W

DOHENY DR.
N 0° 43' 10" E



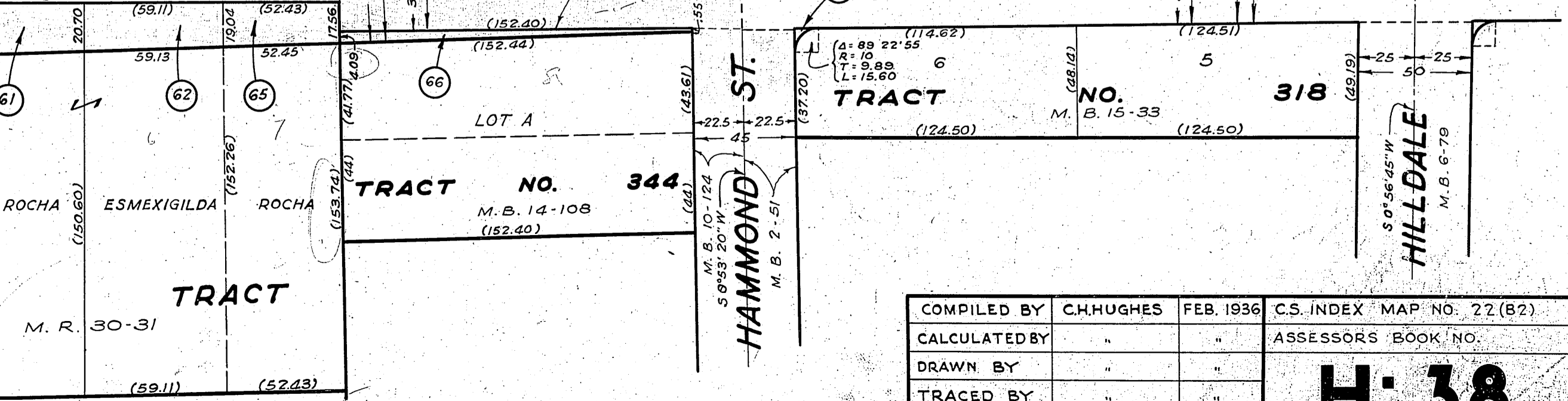
WETHERLY DR.
N 78° 22' 29" E

HILLDALE AVE.
N 0° 05' 35" W



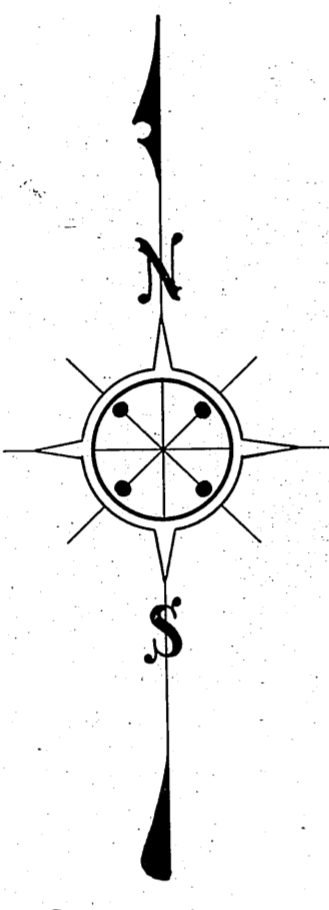
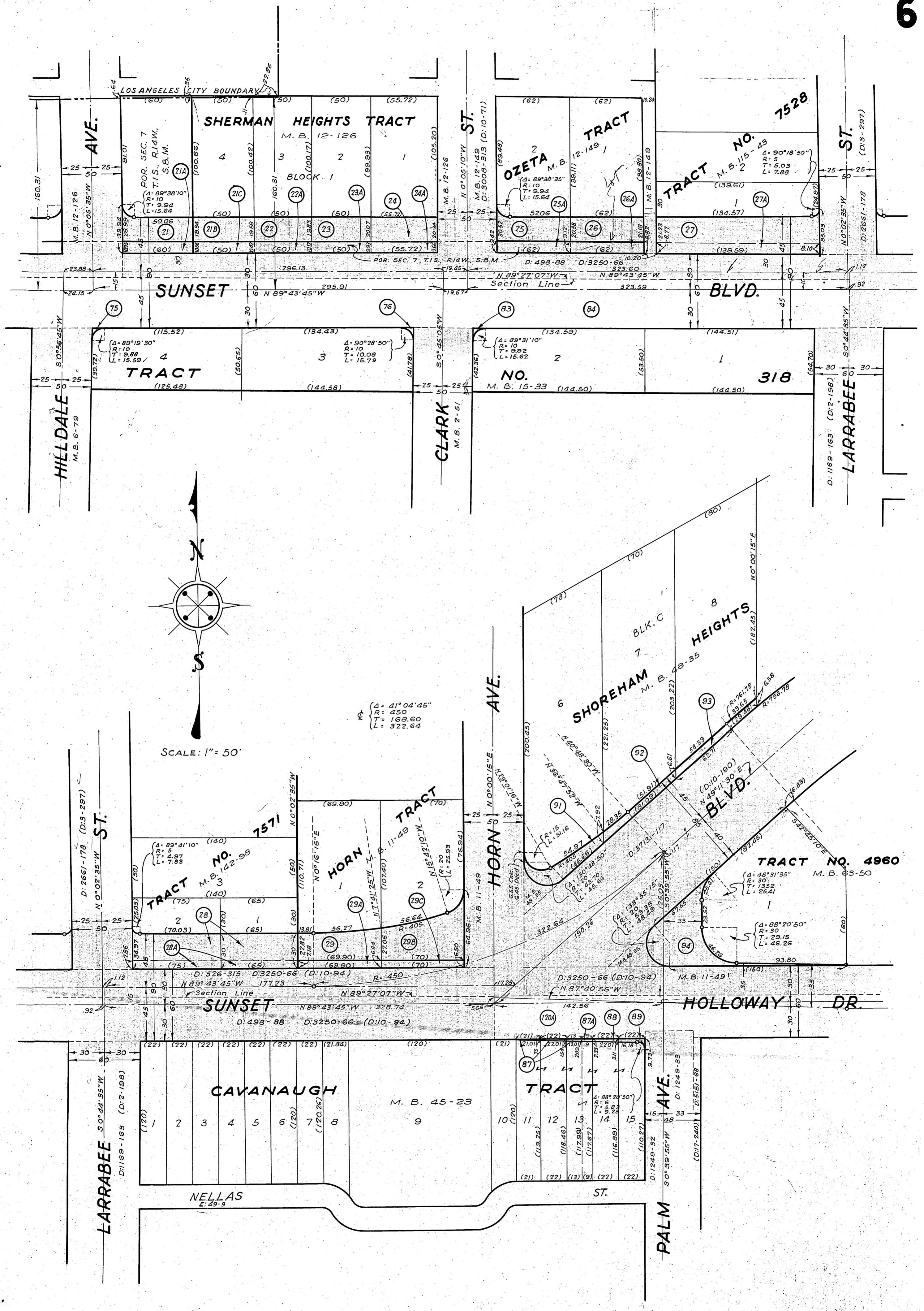
CONCEPCION TRACT
M. R. 30-31

HAMMOND ST.
S 0° 53' 20" W



COMPILED BY	C.H. HUGHES	FEB. 1936	C.S. INDEX MAP NO. 22 (B2)
CALCULATED BY	"	"	ASSESSORS' BOOK NO.
DRAWN BY	"	"	
TRACED BY	"	"	
CHECKED BY	ARNOTT	"	

H: 38



SCALE: 1" = 50'

COMPILED BY	C.H. HUGHES	FEB. 1936	C.S. INDEX MAP NO. 22
CALCULATED BY	"	"	ASSESSORS BOOK NO.
DRAWN BY	"	"	H:38
TRACED BY	"	"	
CHECKED BY	ARNOTT	"	