

OFFICE OF THE COUNTY SURVEYOR OF THE COUNTY OF LOS ANGELES

HIGHWAY DEDICATION MAP

LEGEND

COUNTY SURVEYOR'S MAP NO. 8358 MAP NO. INDEX MAP NO. 35 (4-6-D) SEARCH MAP NO. Atlantic Avenue 1 & 30

FIELD BOOK NO. FIELD BOOK NO.

WORDS AND FIGURES SHOWN QUOTED ON MAP ARE AS DESCRIBED IN THE CONVEYANCE. FIGURES SHOWN IN PARENTHESES ON MAP ARE TAKEN FROM PREVIOUS RECORDS OR ARE CALCULATED THEREFROM. LAND INCLUDED IN CONVEYANCE SHOWN IN COLORED TINT. DEDICATION STATUS SCALE INDICATES RELATIVE IMPORTANCE OF GRANTEE'S INTERESTS IN EACH PARCEL.

POSTING CHECKED table with columns for H. D. MAP BOOK, SEARCH MAP, TRACTS, C.S.M., ASSESSOR'S BOOK, C.S. INDEX MAP.

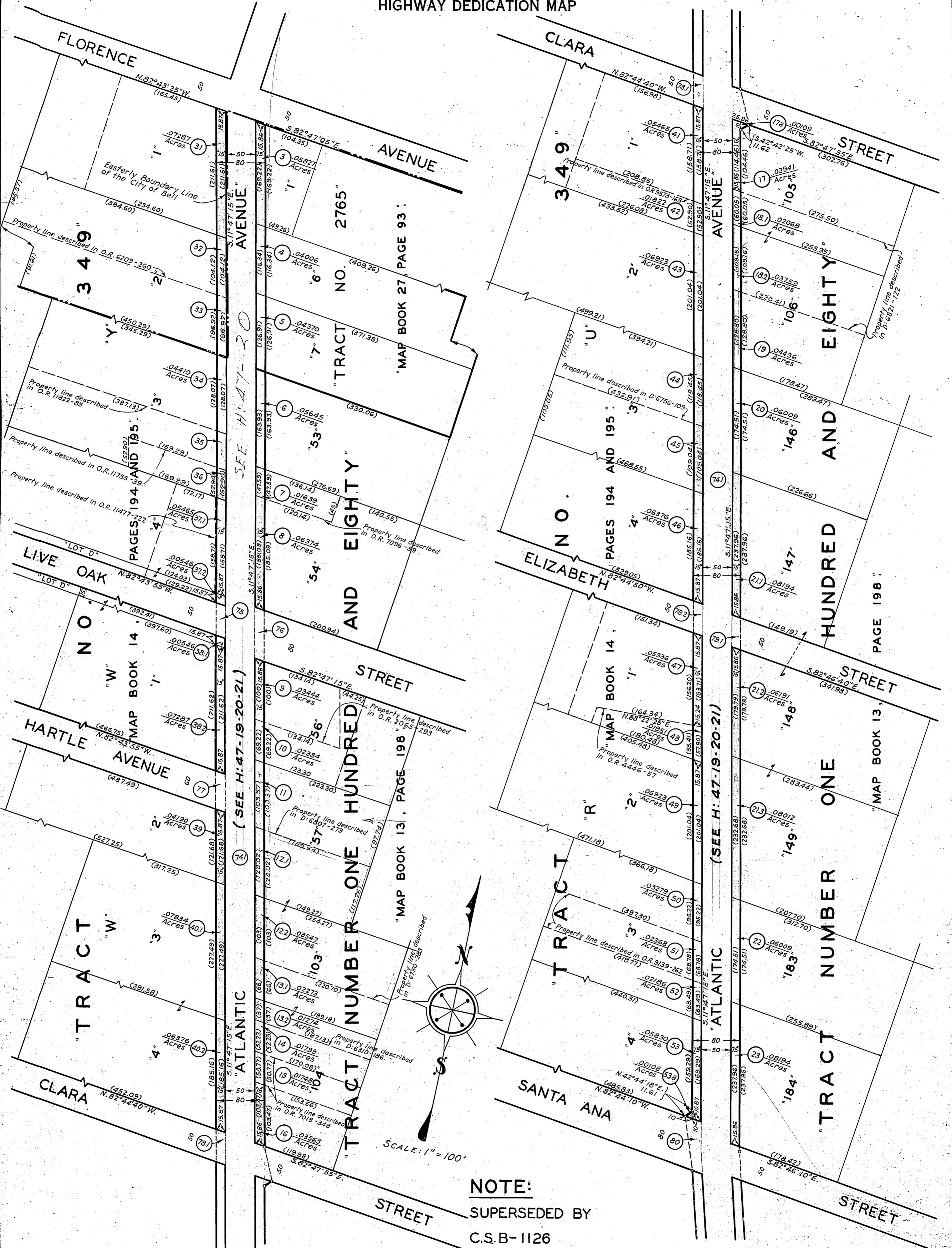
Main table with columns: LINE NO., PARCEL NO., OFFICIAL RECORDS, DATE RECORDED, 'D' BOOK PAGE, DATE OF CONVEYANCE, NATURE OF CONVEYANCE, PURPOSE, NAME, CONSIDERATION, CONDITIONS, GRANTEE, GRANTORS, DEDICATION STATUS SCALE (1-10), and various posting check columns.

SEE H-47-19-21



HIGHWAY DEDICATION MAP

FOR CONTINUATION SEE BELOW



FOR CONTINUATION SEE ABOVE

**NOTE:**  
SUPERSEDED BY  
C.S.B-1126  
(STATE HIGHWAY MAP)

SEE H:47-5

**NOTE:**  
FOR ADDITIONAL  
WIDENING SEE H:47-19-20-21

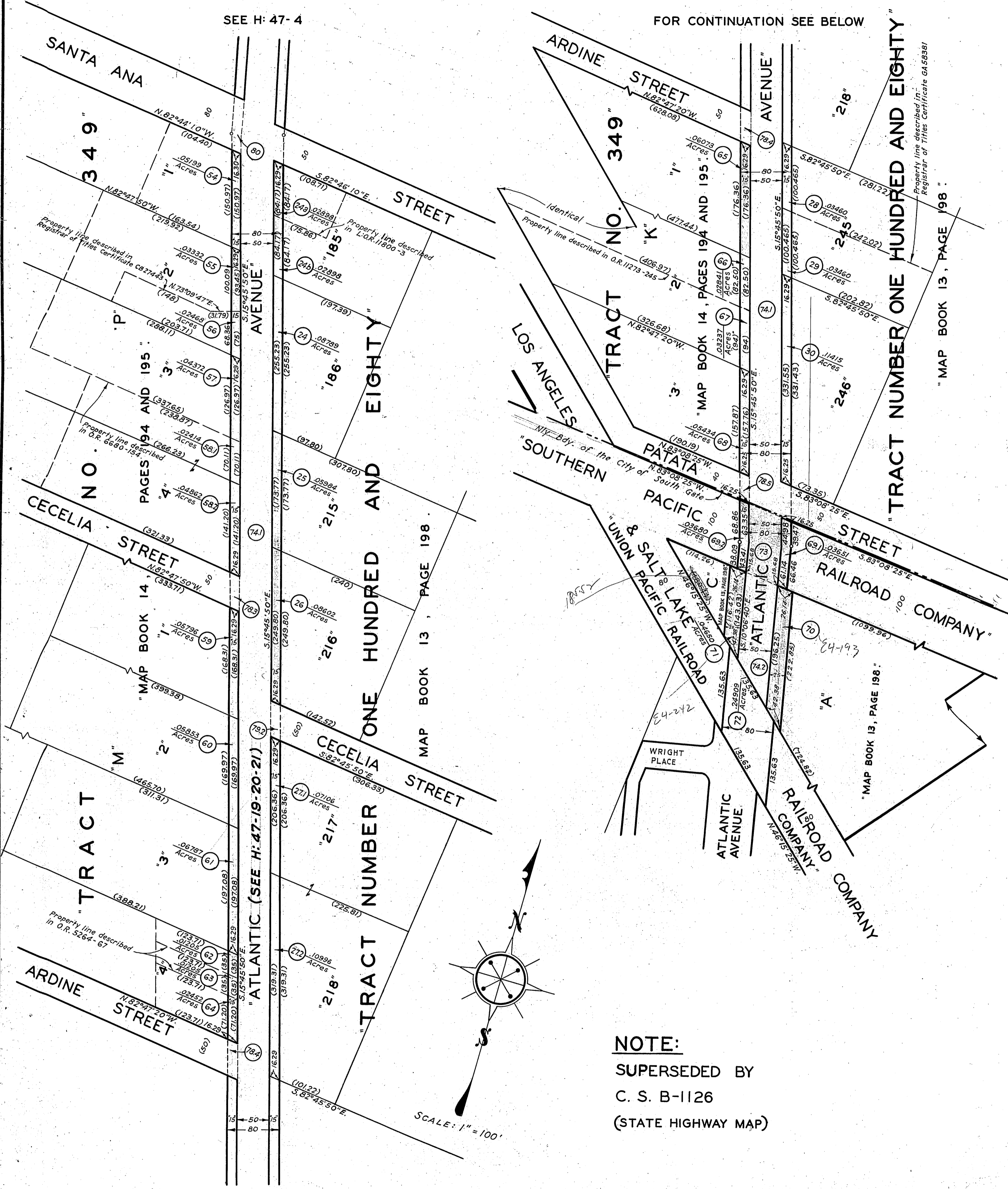
COMPILED BY	Kauffman & Lunt	Aug. 1932	C. S. INDEX MAP NO. 7 55 (4-50)
CALCULATED BY	Kauffman & Green	Oct. 1932	ASSESSOR'S BOOK NO. 757 & 333
DRAWN BY	Kauffman & Green	Oct. 1932	
TRACED BY	Green	Oct. 1932	
CHECKED BY	Hughes	Oct. 1932	

**H:47**

OFFICE OF THE  
**COUNTY SURVEYOR**  
 OF THE COUNTY OF LOS ANGELES  
**HIGHWAY DEDICATION MAP**

SEE H: 47-4

FOR CONTINUATION SEE BELOW



FOR CONTINUATION SEE ABOVE

**NOTE:**  
 SUPERSEDED BY  
 C. S. B-1126  
 (STATE HIGHWAY MAP)

**NOTE:**  
 FOR ADDITIONAL  
 WIDENING SEE H: 47-19-20-21

COMPILED BY	Kauffman & Lunt	Aug. 1932	C. S. INDEX MAP NO. 735, (5-6D)
CALCULATED BY	Kauffman & Green	Oct. 1932	ASSESSOR'S BOOK NO. 333 & 424
DRAWN BY	Kauffman & Green	Oct. 1932	
TRACED BY	Green	Oct. 1932	
CHECKED BY	Hughes	Oct. 1932	

**H:47**