

9

OFFICE OF THE COUNTY SURVEYOR OF THE COUNTY OF LOS ANGELES

HIGHWAY DEDICATION MAP

LEGEND

COUNTY SURVEYOR'S MAP NO. 8594 SHEETS 1 AND 2, 8723, B-529 FIELD BOOK NO. 72 MAP NO. FIELD BOOK NO. INDEX MAP NO. 36 (C.D. 4, 5) SEARCH MAP NO. CENTER STREET (10) WASHINGTON BLVD. (13)

WORDS AND FIGURES SHOWN QUOTED ON MAP ARE AS DESCRIBED IN THE CONVEYANCE. FIGURES SHOWN IN PARENTHESES ON MAP ARE TAKEN FROM PREVIOUS RECORDS OR ARE CALCULATED THEREFROM. LAND INCLUDED IN CONVEYANCE SHOWN IN COLORED TINT. DEDICATION STATUS SCALE INDICATES RELATIVE IMPORTANCE OF GRANTEE'S INTERESTS IN EACH PARCEL.

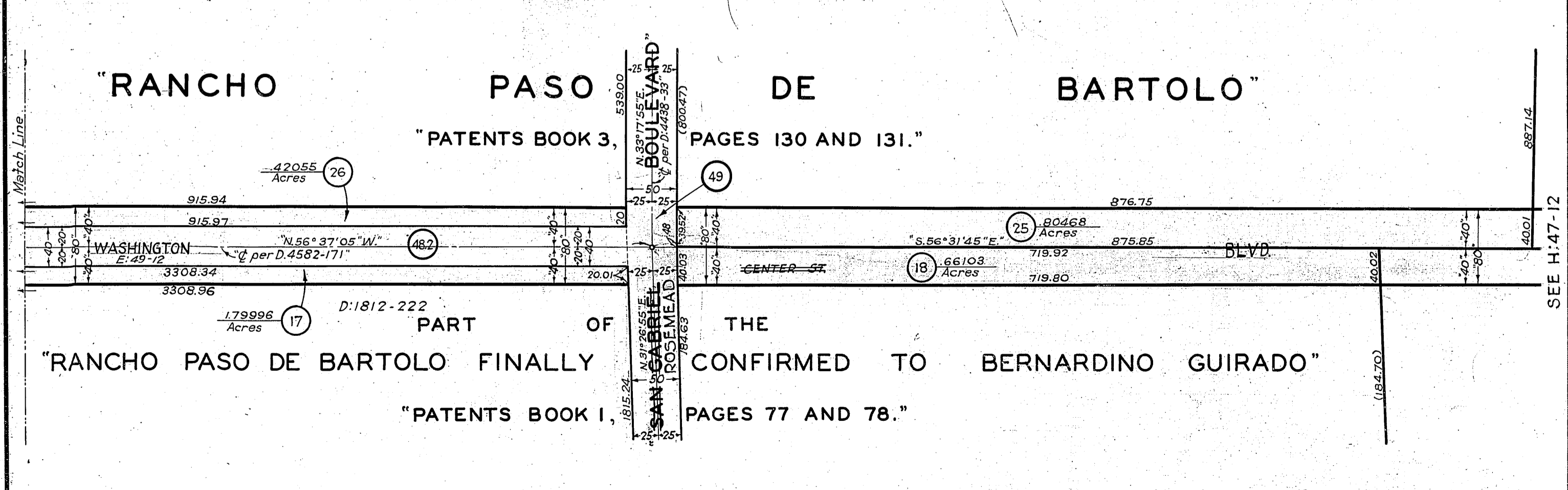
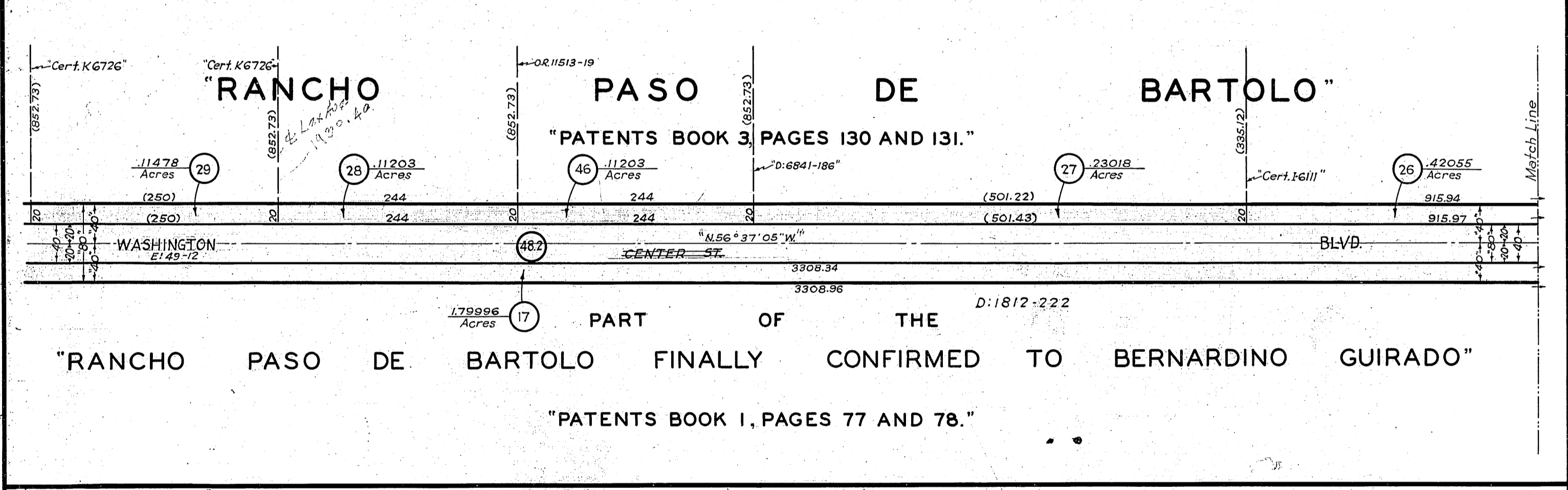
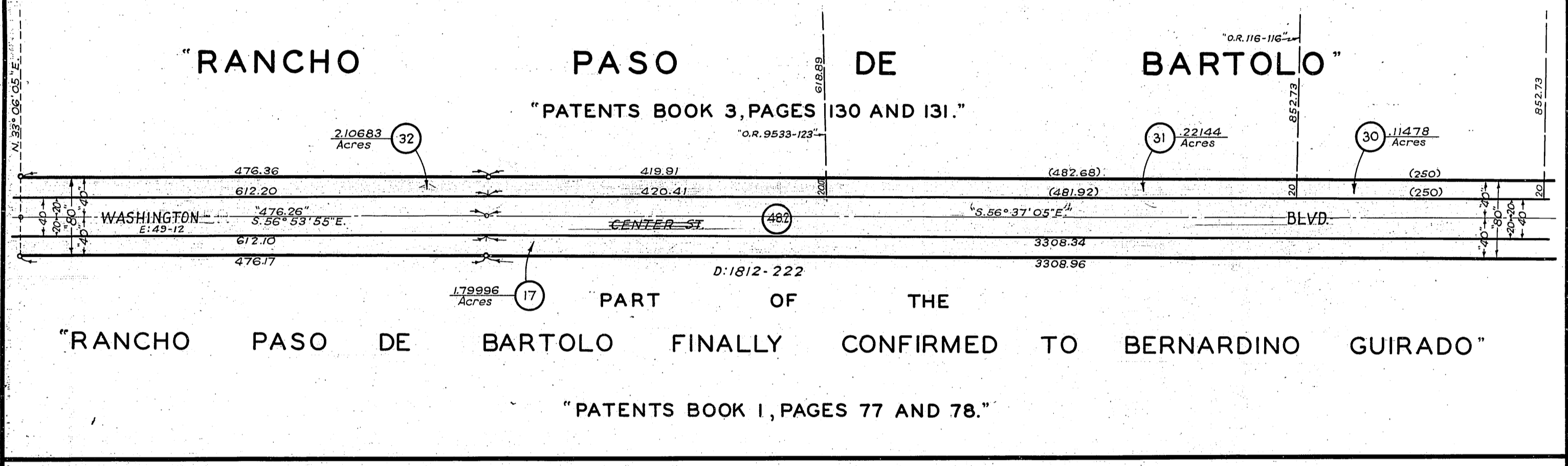
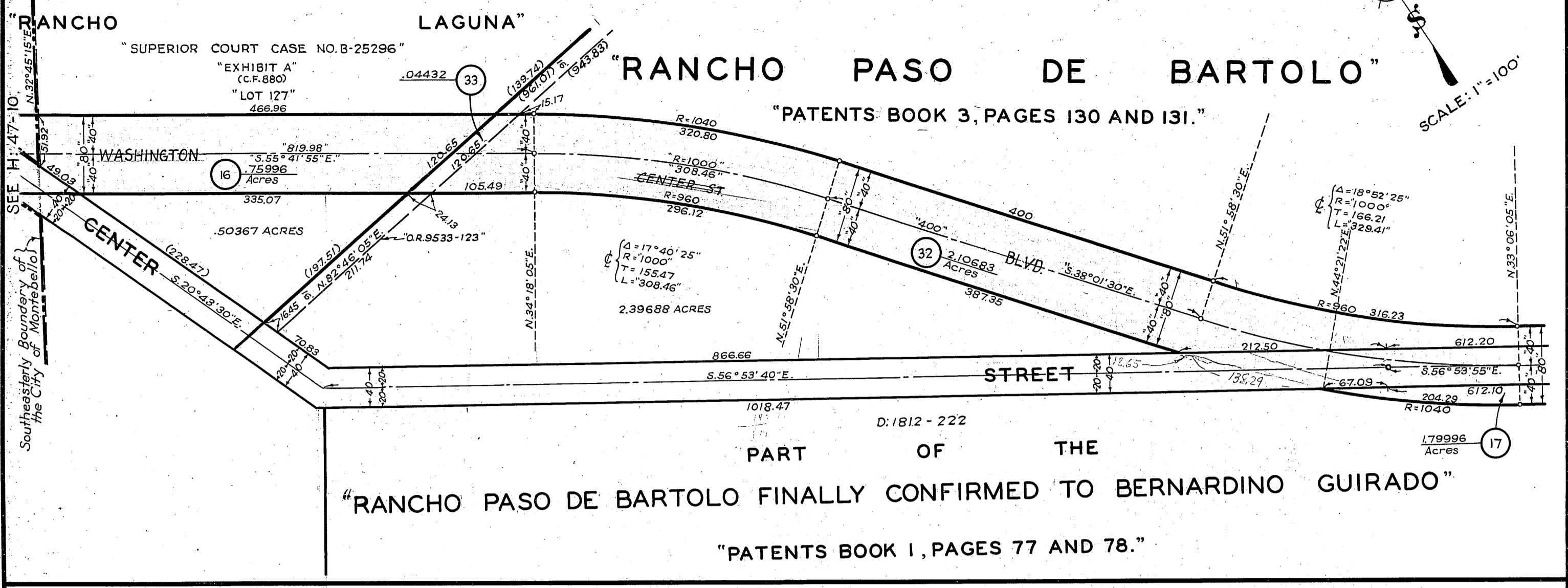
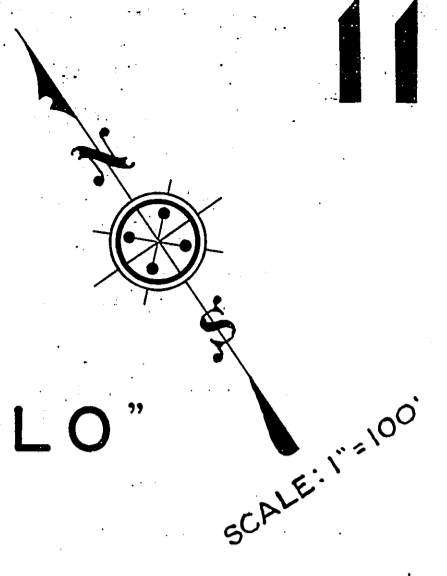
POSTING CHECKED H. D. MAP BOOK SEARCH MAP TRACTS. C.S.M. "D" ASSESSOR'S BOOK C. S. INDEX MAP

Table with columns: LINE NO., PARCEL NO., OFFICIAL RECORDS (CERTIFICATE NO., DOC. NO., BOOK, PAGE), DATE RECORDED, "D" BOOK, DATE OF CONVEYANCE, NATURE OF CONVEYANCE, PURPOSE, NAME, GRANTEE, GRANTORS, DEDICATION STATUS SCALE (1-10), and various tracking columns.

Vertical tracking table with columns: H. D. MAP BOOK, SEARCH MAP, TRACTS. C.S.M. "D", ASSESSOR'S BOOK, C. S. INDEX MAP, and various tracking columns.



OFFICE OF THE  
 COUNTY SURVEYOR  
 OF THE COUNTY OF LOS ANGELES  
 HIGHWAY DEDICATION MAP

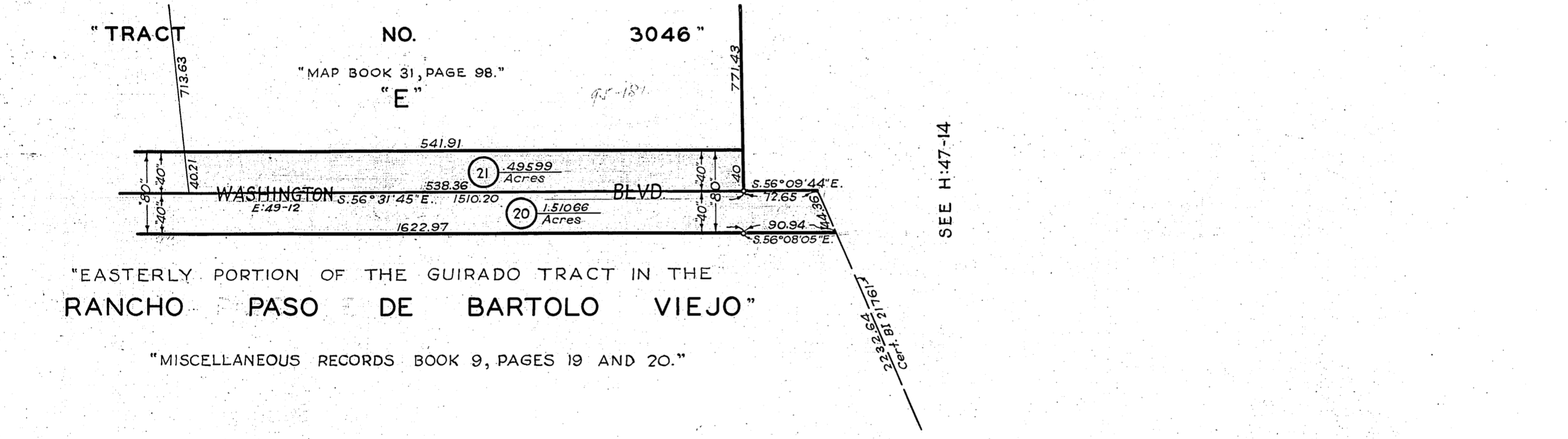
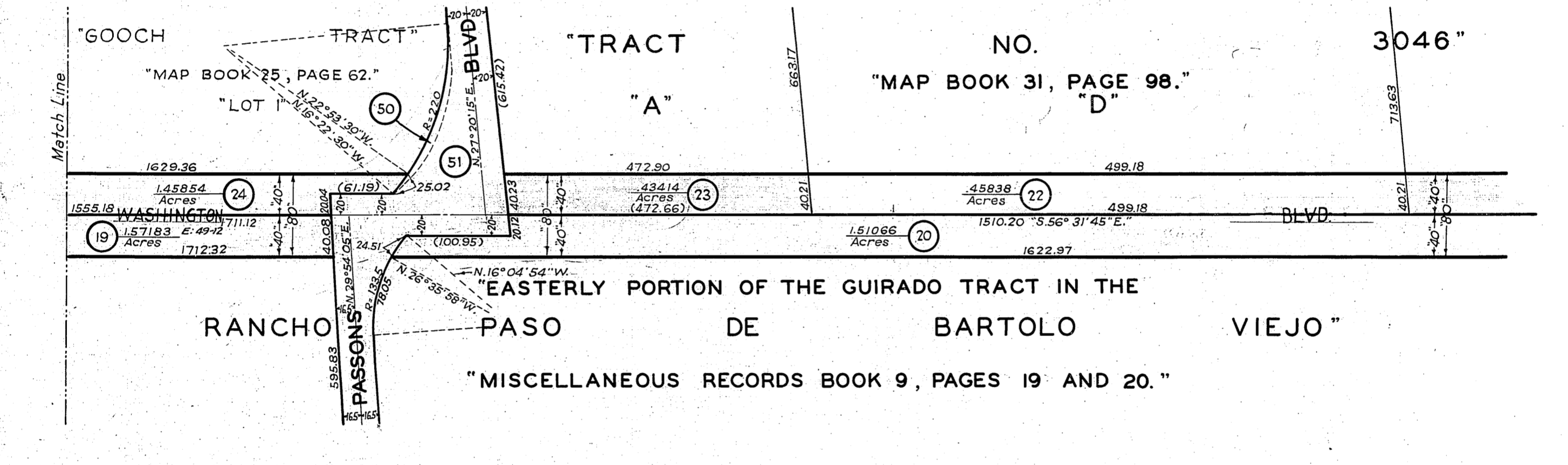
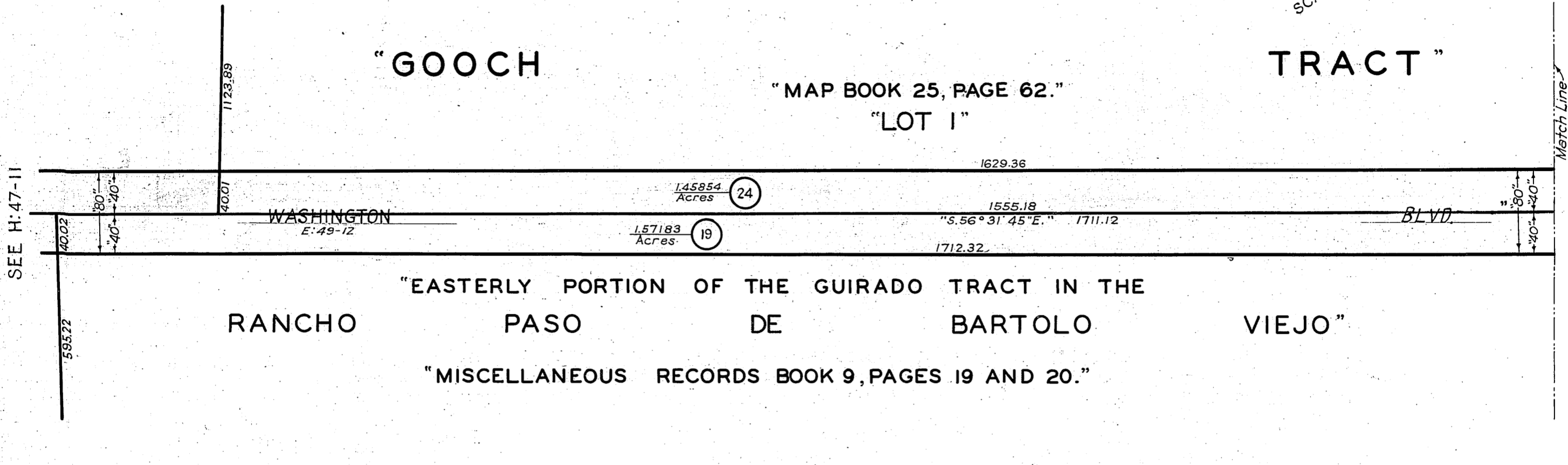
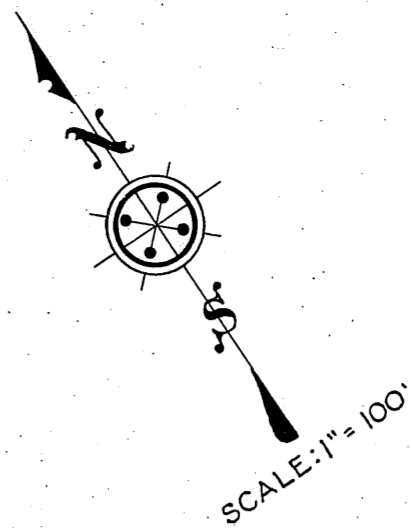


COMPILED BY	S. Silverman	April 1933	C. S. INDEX MAP NO. 36(C4).
CALCULATED BY	V.A. Kauffman	March 1933	ASSESSOR'S BOOK NO. 402, 392, 791
DRAWN BY	S. Silverman	April 1933	
TRACED BY			
CHECKED BY	Hughes & Silverman	May 1933	

**H:47**

OFFICE OF THE  
 COUNTY SURVEYOR  
 OF THE COUNTY OF LOS ANGELES  
 HIGHWAY DEDICATION MAP

12



COMPILED BY	S. Silverman	April 1933	C. S. INDEX MAP NO. 36, (C4)
CALCULATED BY	V. A. Kauffman	March 1933	ASSESSOR'S BOOK NO. 402, 392, 791
DRAWN BY	S. Silverman	April 1933	<b>H:47</b>
TRACED BY			
CHECKED BY	Hughes & Silverman	May 1933	