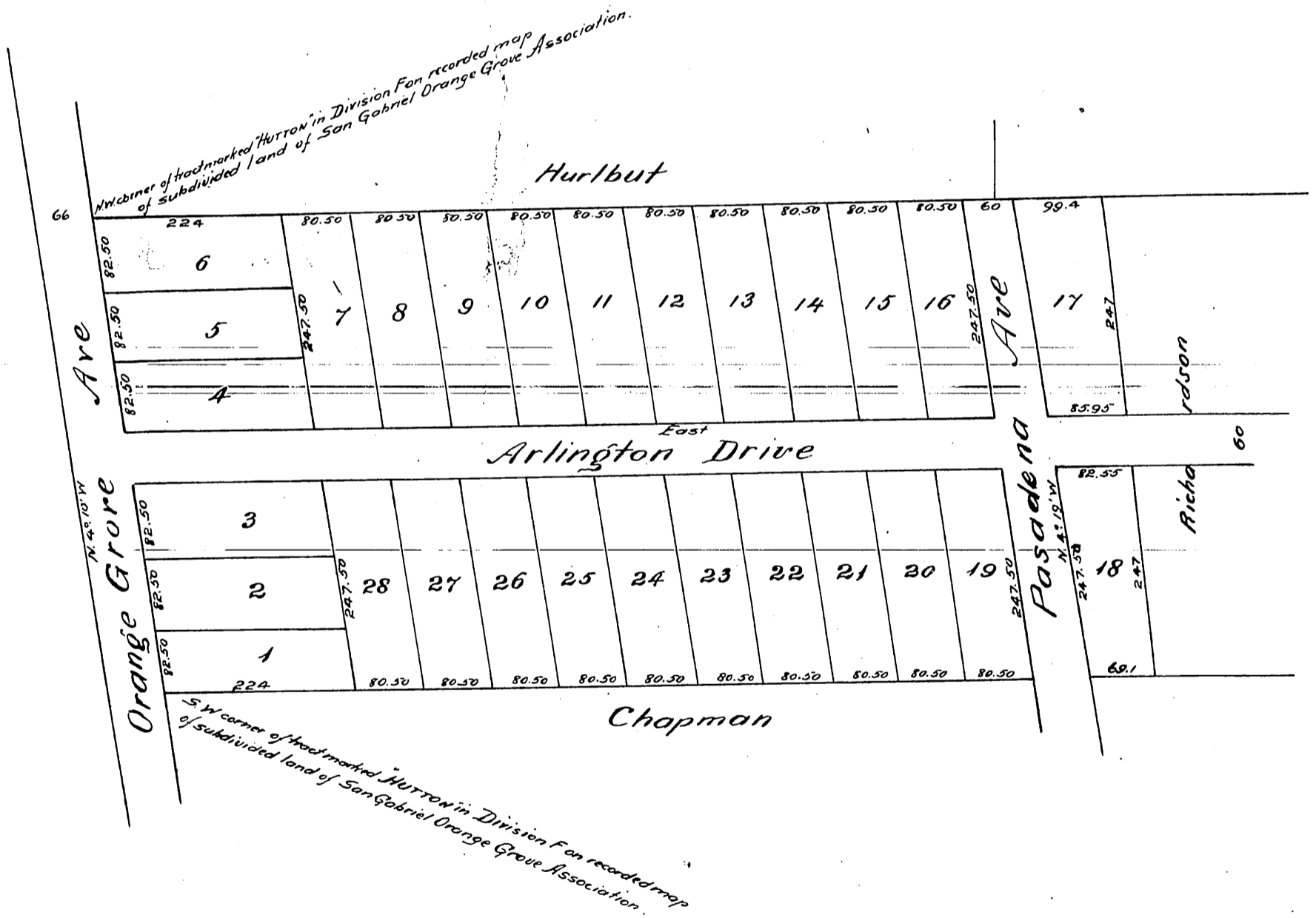


Plat
of the
Cochran & Spitley Subdivision,
Pasadena, Los Angeles Co. California,

Williell Thomson Sur Nov. 1885

Scale 80 ft. = 1 in.

{ Reduced one half }



A full true and correct copy of the original (reduced one half)
recorded April 9th 1886 at 10²⁰ a.m. at request of W. G. Cochran.
Frank A. Gibson County Recorder.
by W. B. Pritchard Deputy.